

CHAPTER 03 CONSULTATION METHODOLOGY

Overview

Varied and large groups of stakeholders are linked to Wood Green's Future in many different ways. For Stage 3A of the consultation, a comprehensive process has been designed to raise awareness and then capture views and concerns of the widest possible group. This was made possible by using a series of both broad and focused communications, consultation means and events.

This chapter presents the local stakeholder map to date, the communication approach, the events timeline, the consultation means used and finally the involvement results.

Between February and April 2016, there were 30 different events including workshops, pop-ups and drop-in sessions at the consultation space.

Multiple stakeholders have been met and heard. They range from ward councillors to hard-to-reach groups and from businesses and residents potentially impacted by the options to council officers.

In total, more than 1100 people have been involved and at least 1500 people verbally informed about the regeneration plan. They filled in more than 300 forms - themselves or with the help of the team, took more than 100 online surveys, completed about 100 short-term projects cards and gave a total of 130 different comments during the workshops.

Getting such a broad feedback on the options has been very useful to understand the special needs and feedback of everyone with an interest in the future of Wood Green and to test the options.



Focus session at the consultation hub

Stakeholder mapping

Through past events, forms filled and further desk-research, the stakeholder database started in June 2016 has expanded and currently includes over 1200 contact details of people who have an active interest in, or are impacted by Wood Green regeneration.

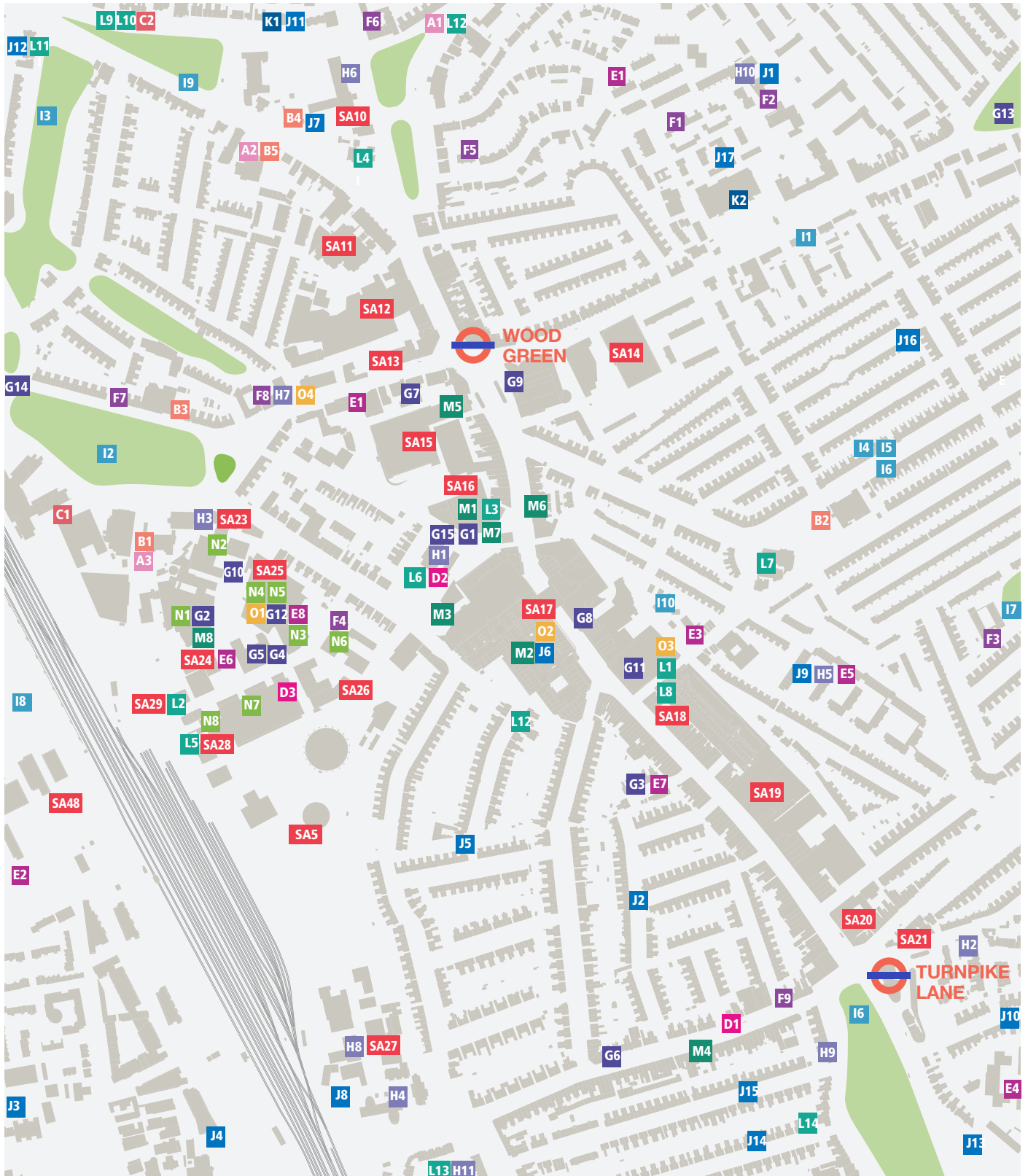
They are kept informed and invited to the different events organised throughout the process, generally via email.

An evolving map

The mapping presented here shows the local groups and organisations who we are in touch with. This is not an exhaustive list, but aims to show a good cross-section of local groups within approximately one mile of the plan site. This boundary is flexible and groups from the wider area who have a particular interest are also involved.

Give us an hand

The mapping is always growing. Please let us know if there are any additional or missing groups you believe should be represented.



Stakeholder map

A EDUCATION - NURSERY

- A1 ABC 123 Nursery
- A2 The Co-operative Childcare
- A3 Alexandra Nursery

B EDUCATION - PRIMARY

- B1 Alexandra Primary School
- B2 Noel Park Primary School
- B3 St Pauls Catholic Primary School
- B4 St Michaels C of E Primary School
- B5 Trinity Primary Academy

C EDUCATION - SECONDARY

- C1 Heartlands High School
- C2 Greek Secondary School of London
- ← Woodside High School
- ← Greig City Academy

D EDUCATION - SPECIAL SCHOOLS

- D1 ESTL English Language School
- D2 Faith Turkish School
- D3 The John Dewey Independent Specialist College (Area 51 Education)
- ← Polish School (Czestochowa Devonia)

E YOUNG PEOPLE

- E1 Wood Green Hall of Residence
- E2 Campsbourne Play Centre
- E3 First Class Learning Centre for Maths and English
- E4 Kori Community Youth Charity
- E5 Sandbunker Youth Club
- E6 Mountview Academy of Theatre Arts
- E7 Big Green Bookshop Education
- E8 Kidz Adventure Playzone
- ⊙ First Alexandra Park Guides & Brownies
- ⊙ Haringey District Scouts
- ⊙ Haringey Youth Council
- ← Woodside Children's Centre
- ← Wood Green Skills Hub
- ← Action for Kids Charitable Trust
- ← Noel Park Childrens Centre
- ← YMCA Harringay Club
- ← African Children and Youth Centre (ACYC)

F ELDERS AND DISABLED

- F1 Bracknell Close Supported Block
- F2 Winkfield Resource Centre, Haringey Phoenix Group and Age UK Haringey
- F3 Alfred Findley House
- F4 John Aldis House
- F5 Louise Court
- F6 Raj Kunj
- F7 Rosecroft
- F8 Sylvia Lawla Court
- F9 Haringey Disability First Consortium
- ⊙ Haringey Forum for Older People
- ← Hornsey Pensioners Action Group

G LEISURE AND ARTS

- G1 Wood Green Central Library
- G2 Collage Arts
- G3 Big Green Bookshop
- G4 Karamel Cafe
- G5 Studio 306 Collective
- G6 Turnpike Arts Group (TAG)

- G7 Green Rooms / Mill Co
- G8 Cineworld
- G9 Vue Cinema
- G10 Martial Arts Academy
- G11 EasyGym Wood Green
- G12 Urban Krav Maga NE London
- G13 Chapmans Green Bowling Club
- G14 Everyones's Climbing Tree
- G15 Zone Gym
- ← Alexandra Park & Palace Charitable Trust Committee
- ← Alexandra Park Cricket and Football Club
- ← Alexandra Park Library
- ← Friends of Alexandra Palace Theatre
- ← New River Stadium Sports Centre
- ← North London Boxing Club

H COMMUNITY GROUPS AND FACILITIES

- H1 Asian Centre
- H2 Haringey Chinese Centre
- H3 The jobcentre plus
- H4 West Indian Cultural Centre
- H5 Sandbunker Community Centre
- H6 Civic Centre Haringey
- H7 Wood Green Customer Service Centre
- H8 African & Caribbean Leadership Co Ltd
- H9 Asian Action Group
- H10 Greek Parents Association (GPA)
- H11 Greek Cypriot Women's Organisation (GCWO)
- H12 Turnpike Lane Citizen Advice
- ⊙ Haringey Association of Voluntary and Community (HAVCO)
- ⊙ Groundwork UK
- ⊙ Parikiaki
- ← Haringey Migrant Support Centre
- ← Haringey Solidarity Group
- ← Haringey Housing Action Group
- ← Bangladesh Women's Association
- ← Turkish Cypriot Community Association
- ← Embrace UK Community Support Centre
- ← Cypriot Community Centre

I LOCAL INTEREST GROUPS

- I1 Wood Green The Animals Charity
- I2 Guardians of Wood Green Common
- I3 Friends of Nightingale Gardens
- I4 Noel Park Big Local
- I5 Noel Park CA*
- I6 Team Noel Park
- I6 Friends of Ducketts Common
- I7 Friends of Russell Park
- I8 Hornsey Water Works and Filter Beds CA*
- I9 Trinity Gardens CA*
- ⊙ Friends of the Earth (Tottenham & Wood Green)
- ⊙ Haringey Allotments Forum
- ⊙ Haringey Cycling Campaign
- ⊙ Haringey Friends of Parks Forum
- ⊙ Haringey Living Streets
- ⊙ Harringay Online
- ⊙ New River Path Action Group
- ⊙ North London LETS
- ⊙ Sustainable Haringey
- ⊙ Tree Trust for Haringey

- ⊙ Urban Harvest
- ← Alexandra Park and Palace CAAC**
- ← Bowes Park Community Association
- ← Campsbourne CA*
- ← Community Use For the Old Station (CUFOS)
- ← Friends of Alexandra Palace
- ← Friends of Alexandra Park
- ← Friends of Belmont Recreation Park
- ← Friends of Fairland Park
- ← Friends of Palace Gates Embankment Nature Reserve
- ← Friends of Wood Green Cemetery
- ← Friends of Woodside Park
- ← Friends of Lordship Recreation Grounds
- ← HillField CA*
- ← Hornsey High Street CA*
- ← Hornsey Historical Society
- ← Crouch End Neighbourhood Forum

* CA = Conservation Association
** CAAC = Conservation Area Advisory

J TENANTS AND RESIDENTS ASSOCIATIONS

- J1 Bracknell Close & Winkfield Road RA*
- J2 Burghley Road RA*
- J3 Campsbourne RA*
- J4 New River Village RA*
- J5 Parkside Malvern RA*
- J6 Sky City Community Association
- J7 Travellers Site (No RA*)
- J8 Westpoint Appartements RA*
- J9 The Sandlings RA*
- J10 West Green RA*
- J11 Commerce Road TRA**
- J12 Three Avenues RA*
- J13 Milton Road, Willow Walk and West Green RA*
- J14 Raleigh Road RA*
- J15 Sydney Road RA*
- J16 Noel Park North Avenue RA*
- J17 Crown Close RA*
- ⊙ Haringey Federation for RA*
- ⊙ Haringey Leaseholders Campaign Group
- ← Alexandra RA*
- ← Avenue Gardens RA*
- ← Bedale House RA*
- ← Beresford Road RA*
- ← Birkbeck Road RA*
- ← Bounds Green & District RA*
- ← Bowes Park RA*
- ← Campsbourne RA*
- ← Chitts Hill RA*
- ← Fairfax Road RA*
- ← Falkland RA*
- ← Hornsey N8 RA*
- ← Nightingale Mews RA*
- ← North View Road RA*
- ← Northumberland Park RA*
- ← Palace & Park RA*
- ← Palace Gates RA*
- ← Palace View RA*
- ← Park Avenue North RA*
- ← Partridge Way RA*
- ← Spanswick Lodge RA*
- ← Station Mansions RA*
- ← Stokley Court RA*

- ← Strawbridge Court RTA***
- ← Warner Estate RA*
- ← Willoughby RA*

* RA = Residents Association
 ** TRA = Tenants and Residents Association
 *** RTA = Residents and Tenants Association

K SAFETY

- K1** Metropolitan Police - Fishmongers Arms
- K2** Wood Green Crown Court
- ⊙ Alexandra Safer Neighbourhood Team
- ⊙ Bounds Green Safer Neighbourhood Team
- ⊙ Haringey Safer Neighbourhood Team
- ⊙ Hornsey Safer Neighbourhood Team
- ⊙ Noel Park Safer Neighbourhood Team
- ⊙ Woodside Safer Neighbourhood Team
- ⊙ Ladder Community Safety Partnership
- ⊙ Haringey Association Of Neighbourhood Watches
- ⊙ Hornsey and Wood Green Association Of Neighbourhood Watches
- ← Wood Green Police Station

L FAITH GROUPS

- L1** Wood Green Christian Centre
- L2** Faith Miracle Centre
- L3** Dominion Centre
- L4** St Michael's Church
- L5** Victory international Church
- L6** Wood Green Faith Mosque
- L7** St Mark's Church, Noel Park
- L8** Salvation Army
- L9** St Barnabas - Greek Orthodox Church
- L10** St Mary's Greek Orthodox Church
- L11** Braemar Avenue Baptist Church
- L12** Grace Baptist Church
- L13** Torchbearers Worldwide Ministry
- L14** Willoughby Methodist Church
- ← Eritrean Ethel Church
- ← Westbury Avenue Baptist Church
- ← Wightman Road Mosque
- ← London Islamic Cultural Society
- ← Christ Church with Saint Peter
- ← Jacksonville Baptist Theological Seminary
- ← St John the Baptist Greek Orthodox Church
- ← The Gospel Centre
- ← London Diyanet Mosque

M BUSINESS AND ENTERPRISE GROUPS

- M1** Retailers at the Library
- M2** The Mall Tenants Association
- M3** Retailers in the Indoor Market
- M4** Shine Enterprise Centre
- M5** Retailers at the Morrisons and Vue Cinema
- M6** Wood Green Business Forum
- M7** Business Lounge at the Library
- M8** Urban Futures
- ← Harringay 4 Shops

N OFFICES / CO-WORKING SPACES

- N1** Chocolate Factory 1 / Workspace Group
- N2** Guillemot Place
- N3** Chocolate Factory 2
- N4** Parma House

- N5** Cypress House
- N6** Bittern Place
- N7** Olympia Industrial Estate
- N8** 57-77 Coburg Road

O HOUSING ASSOCIATIONS

- O1** St Ignatius Housing Association
- O2** Metropolitan Housing
- O3** Sanctuary Housing Association
- O4** Homes for Haringey
- ⊙ Notting Hill Housing
- ⊙ London & Quadrant Housing
- ⊙ Causeway Irish Housing Trust
- ⊙ Newlon Housing Trust
- ⊙ Circle 33 Housing Trust
- ⊙ Hornsey Housing Trust Ltd
- ⊙ Family Mosaic
- ⊙ Southern Housing Group

P WARD COUNCILLORS & POLITICIANS

- ⊙ Alexandra Ward Councillors
- ⊙ Bracknell Close Ward Councillors
- ⊙ Bounds Green Ward Councillors
- ⊙ Campsbourne Ward Councillors
- ⊙ Haringey Ward Councillors
- ⊙ Hornsey Ward Councillors
- ⊙ Muswell Hill Ward Councillors
- ⊙ Noel Park Ward Councillors
- ⊙ Seven Sisters Ward Councillors
- ⊙ Stround Green Ward Councillors
- ⊙ West Green Ward Councillors
- ⊙ Woodside Ward Councillors
- ⊙ Catherine West MP
- ⊙ Haringey Liberal Democrats

Q STATUTORY AND PUBLIC STAKEHOLDERS

- ⊙ the Environment Agency
- ⊙ Historic England
- ⊙ Natural England
- ⊙ the Mayor of London (GLA)
- ⊙ the Civil Aviation Authority
- ⊙ the Homes and Communities Agency
- ⊙ NHS
- ⊙ the Office of Rail Regulation
- ⊙ Transport for London
- ⊙ Integrated Transport Authority
- ⊙ Highways England
- ⊙ the Marine Management Organisation
- ⊙ Sport England
- ⊙ Thames Water
- ⊙ London Cycling Campaign
- ⊙ MET Police

SA SITES ALLOCATION - LANDOWNERS

- SA5** Clarendon Square - mix
- SA10** LBH Civic Centre - public (LBH)
- SA11** Green Ridings House - private
- SA12** Wood Green Bus Garage - public (GLA)
- SA13** Station Rd Offices - mix
- SA14** Mecca Bingo - private
- SA15** Morrison's Wood Green - private
- SA16** Wood Green Library - mix
- SA17** The Mall / Sky City - private
- SA18** Bury Rd Car Park / Page High - public
- SA19** 16-54 Wood Green High Rd - mix
- SA20** L/b Westbury & Whymark Av. - private

- SA21** Turnpike Lane Triangle - private
- SA23** Wood Green Cultural Quarter (north) - mix
- SA24** Wood Green Cult. Quarter (south) - private
- SA25** Wood Green Cult. Quarter (east) - private
- SA26** Clarendon Square Gateway - mix
- SA27** Clarendon Rd South - mix
- SA28** NW of Clarendon Square - private
- SA29** Land Adjacent to Coron^{tion} Sidings - public
- SA48** Hornsey Water Treatment Works - private
- ← Rail Approach - private

KEY

- ← Located off the map
- ⊙ Overarching group / multiple locations

Communications

A comprehensive communication strategy was used to reach both the broad public and target specific groups.

Information letters

Prior to the main consultation, Soundings ran two door-to-door sessions to make sure impacted residents, traders and businesses were made aware about the development of the plans, the potential impact of the options on their homes, properties and businesses and how to get involved and have their say.

Approximately 620 letters have been handed out individually (when the occupier was available) in the Sky City and Page High estates, in the Caxton Road area, within the Mall/ Shopping City, the Market, at the library, Morrisons, in the Cultural Quarter and on a section of the High Road.

Formal council letters / invitations

A formal notice setting out the proposals matters and representations procedure was placed in the 'Haringey Independent' newspaper on 5th February 2016. In addition, on 8th January, a total of 1,582 notifications were sent by post or email to all contacts on the Haringey's consultation database including all appropriate general consultation bodies. Additionally 429 properties within Site Allocation boundaries were notified by letter. Addresses outside Site Allocation boundaries were not notified directly, but site notices were placed outside sites.

Flyer drops and business cards

About 18,700 event flyers detailing the public exhibition, workshop and online survey were delivered to households and businesses surrounding the site, alongside several 'bundles' to local centres. (See distribution map opposite)

The flyers advertised the public exhibition and workshop and explained how to take the formal (statutory) and informal consultation survey.

During the different events about 100 business cards were handed out to maintain a link with attendees.

Vinyls, posters and banners

The council invested in a vacant shop on the High Road to hold a series of consultation events and to be as present, visible and central as possible in Wood Green. Vinyls were placed on the windows and black boards placed on the pavement to catch the attention of passersby and to promote the series of events.

In addition more than 100 posters were placed in Wood Green and three banners at key locations on railings around Turnpike Lane station and on the River Park House building in front of Wood Green station to maximise promotion.

Pop-up cargo-bike

A branded cargo-bike was used to raise awareness in Sky City and Page High estates during two pre-exhibition pop-ups. Later on it was used as a sign-in spot at the consultation hub.

Consultation hub

The exhibition space was designed to be friendly and inviting, and the materials provided clear and accessible information with interactive elements to engage people. The boards provided a distilled version of the AAP Issues & Options document that was also available in the space to view.

Website and digital media

The project page on Haringey's website is regularly updated to keep people informed about the project and how to get involved. It provides access to online surveys, information and consultation material and other key documents relating to the project.

Haringey published several posts about the consultation on Haringey council's facebook and twitter accounts (1,178 followers in facebook and 8,943 followers on twitter). A total of 34 re-tweets and 10 likes have been received.

Also there have been posts and events created on popular local networks such as Haringay Online and Team Noel Park facebook page.

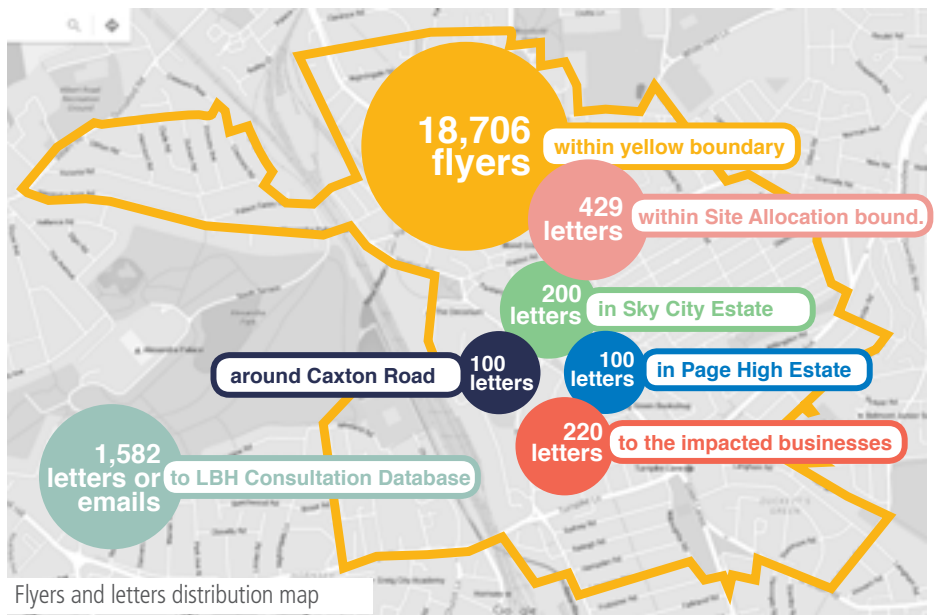
Soundings ran four email campaigns to inform the stakeholder database about the consultation.

Press releases

In the local press, there were articles in Haringey People and the team Noel Park newsletter published in February.

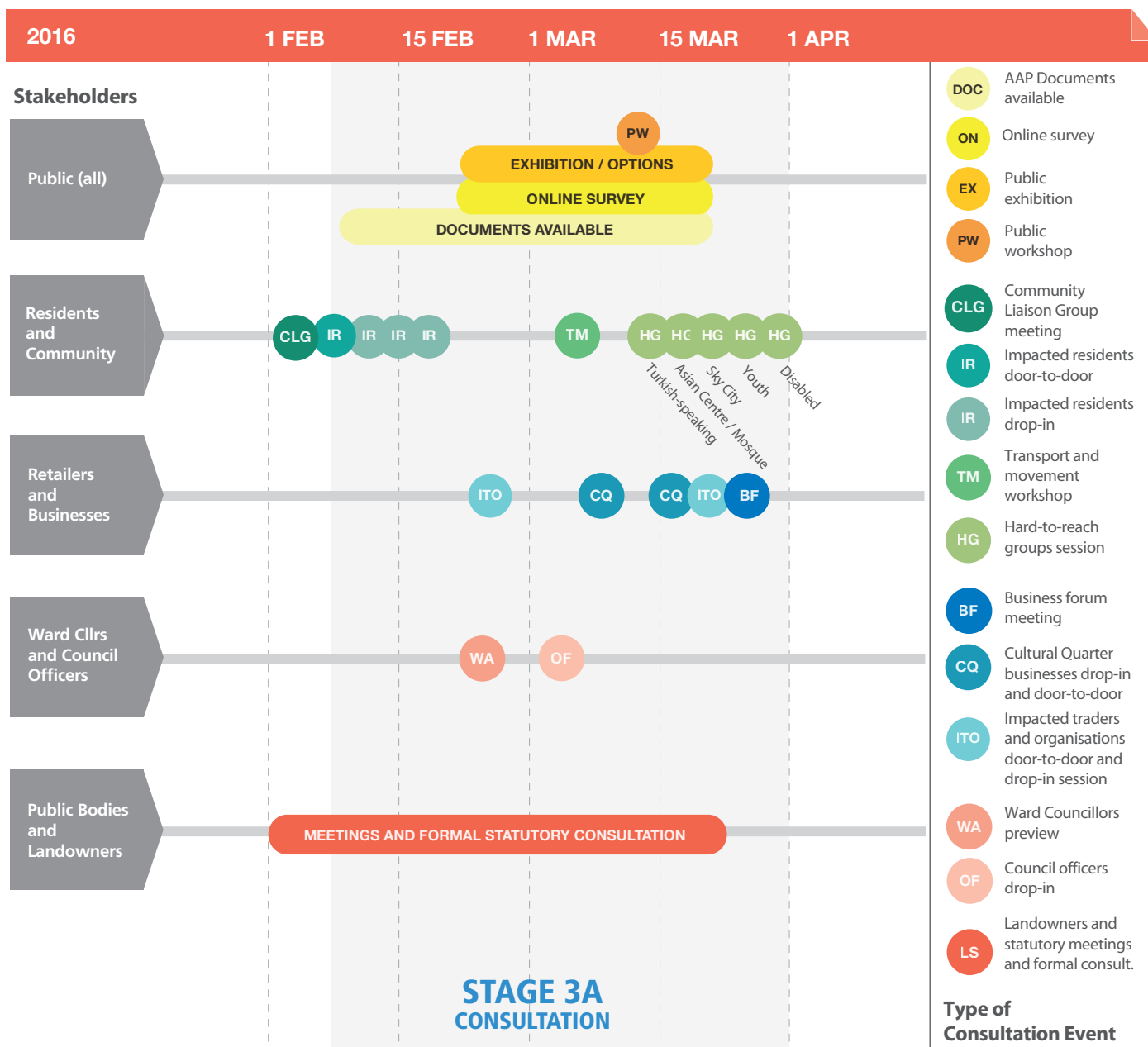
Graphic identity

Wood Green's Future graphic mark has been established since the beginning of the process and has been used consistently and creatively to provide a strong and recognisable identity to all communications and media.



Events timeline and consultation activities

Below is the consultation plan showing all activities held during Stage 3A of the consultation, followed by a description of each event and the method of capturing feedback.



**Community Liaison Group (CLG)
Preview meeting**

31 participants attended a meeting at the Wood Green Library on 2nd February 2016. Representatives of the council, Fluid and Soundings were there to provide an update, present the findings from the consultation to-date and give a preview of the four regeneration options for Wood Green's Future and AAP and to be consulted on with the public from 22nd February.

They were invited to note down any additional information they felt should be considered, either in their individual feedback forms or verbally for discussion.

Residents door-to-door session

Before the start of the public exhibition and main consultation, potentially impacted residents were made aware about the development of a regeneration plan. Door knocking was carried out to over 400 homes at Sky City and Page High estates and the area around Caxton Road and Mayes Road. 400 letters were directly handed out or door dropped inviting residents to join dedicated pop-ups in their estate or to book an appointment with the project team to find out more about the plan. Several targeted posters, including translations were also placed in communal areas. During this session, approximately 150 people were directly spoken to by the team.

Dedicated pop-ups / drop-in

At two pop-ups which took place in the Sky City and Page High estates, 32 interested residents came to find out more despite the bad weather.

Residents 121 meeting

Two residents from Caxton Road took up the offer of a one 2 one meeting with the council and Fluid to discuss the regeneration plan and its impact of their property.



Pop-up in Sky City Estate



Pop-up in Page High Estate

Consultation hub

A consultation hub on the High Road was located in a vacant shop at a very central and accessible location in Wood Green. It was open between the 22nd February and the 19th March and welcomed more than 800 people.

The hub was divided into two distinctive spaces: the exhibition/survey area and the workshop area. Refreshments and a sofa were provided to give the participants the chance to take the time they needed to complete cards, forms and questionnaires.

Members of Soundings, Fluid (design team) and council officers were present to take people through the boards, give extra information, answer questions and help them to fill in cards, forms and surveys.

Public exhibition

The ward councillors from the Wood Green area and surroundings were invited to preview the exhibition that consisted of 15 boards.

These presented the context of the regeneration plan, the latest findings from the consultation to-date (turned into a set of goals) and a 'FAQ' - Frequently Asked Questions - booklet responding to the questions raised during the previous consultation stage. It also showed the spatial vision and strategy for Wood Green explaining how the goals have been integrated into the spatial plan.

Then visitors could discover the four broad options for a long-term plan - based on different priorities. Attached to each board was a booklet providing more detail for those who wanted to dig deeper. Information was provided on heritage, heights, uses and routes.

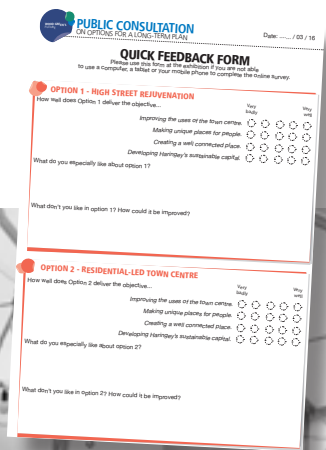
Finally visitors could contribute their ideas about short-term projects.

Consultation forms on the options

Hard copies and digital versions of a survey - on computers and tablets - were available to gather people's views and comments. More than 260 forms and surveys have been completed during eleven manned sessions.

Participants could tell us how well each option was doing against the common goals, what they liked within each option, what could be improved or better detailed and how. Please find a copy of the forms in the appendix about the consultation material.

There was also a more formal questionnaire available on Haringey's website and at the Haringey Civic Centre, the Planning Reception at River Park House, and at all public libraries across the Borough.



Consultation hub at the beginning of the exhibition

Community cards

Visitors could choose examples of short-term projects amongst the 250 examples and tell us how it could improve Wood Green and where it could be located. People could also describe their own projects and give their details to connect with other interested participants.

About 100 projects were chosen and described. 36 people have given their details to connect with other participants interested in starting community-led projects. These are means to improve Wood Green before the completion of the long-term plan.

Discover a few of these projects on page 14 and 15 and find all of them in the appendix about the short-term projects.

Kids drawings

Kids could also express their views for the future of Wood Green by drawing their ideas on special cards. These were displayed during the whole period of consultation.

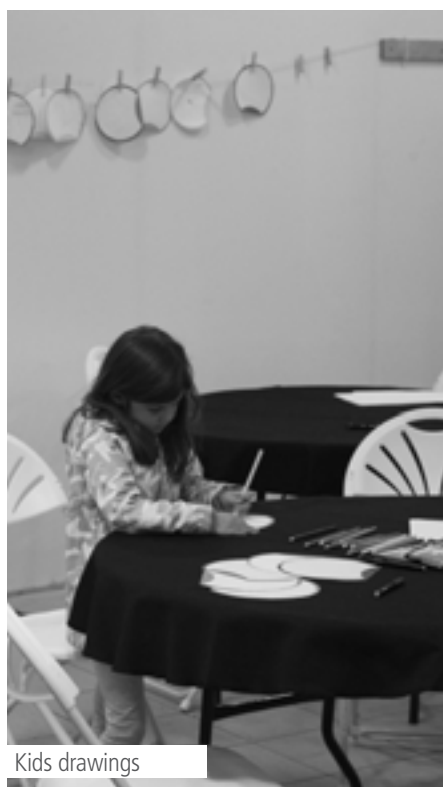
Online surveys

A public online survey was open from the 2nd February to the 31st March. Through the survey, all elements from the public exhibition were presented. All images and booklets were made available to download as well. 87 people have completed this survey.

A special survey for Haringey's officers was facilitated and 25 officers have taken this survey.



Short-term ideas



Kids drawings



Online survey at the hub

Public workshop

During the exhibition, one public workshop was held on the 10th March, and the 20 people that attended were able to exchange views and ideas with other community members.

The group included a resident of Sky City, council officers, an art curator, students, traders and representatives of residents associations and local interest groups such as Sustainable Haringey.

They were first presented with the options and the vision and strategy behind them and were given the chance to ask questions.

Then they could discuss and develop common responses within round table groups - facilitated by a project team representative.

Their responses were given by option and were about what they:

- like,
- would like to improve,
- would like to see better defined,
- would like to suggest by option.

They wrote their comments on post-it notes that were displayed on boards summarising all of the workshop findings at the end.

Workshop on transport and movement

During the consultation, many consultees gave comments on issues relating to transport (such as traffic, parking, public transport, cycling, pedestrianised areas, etc.). Due to the particular interest, a focus session was held to bring together key stakeholders to share views and ideas on this important theme.

A mix of 12 professional stakeholders, council officers and community members attended and were invited to give their views on varying approaches to transport strategies linked to each option. These were mostly showing variables about where the traffic could go, be diverted or distributed.

Beside giving their comments on the proposed options, attendees also made interesting suggestions. You will find them under the topic transport and parking on page 52.



Public workshop



Businesses door-to-door session

To make sure a diverse range of consultees would attend the exhibition - including the impacted traders and residents - we invited different groups to manned special drop-in sessions where they could ask and get answers to more specific issues and have individual help to fill in forms or surveys.

Several targeted groups were invited through door-to-door outreach on the High Road and at the Cultural Quarter. As a result over 250 people were directly informed about the plans, process and consultation.

Special posters were also placed at relevant locations in Wood Green and at the consultation hub for each of the targeted manned sessions.

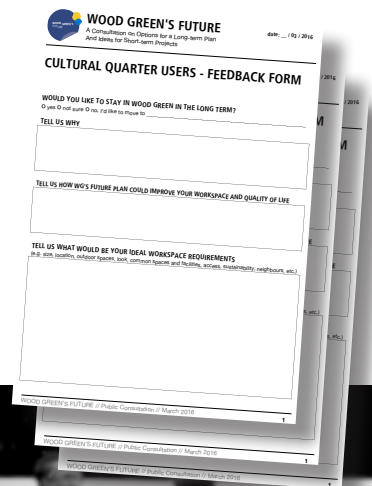
Manned focus sessions at the hub

Special sessions were organised for the following groups: the Alexandra Palace Trust, impacted traders, Business Forum Members, Sky City residents, Turkish-speaking residents, the Asian Centre and Mosque, Cultural Quarter users, youth representatives and disabled residents in Wood Green.

In total, 125 people have attended the focus sessions, the Cultural Quarter users group being the largest.

Dedicated forms

As a complement to the general forms, focus forms were available during the focus sessions to get to know the more specific needs and requirements of these groups.



Focus sessions



Community involvement

Local attendance mapping

To the right is a mapping of known event attendees and people who have given us their feedback. This gives a broad indication of where those engaged parties are geographically located in relation to the site. It is worth noting that contact details could not always be collected.

Demographics

To check we were speaking with a representative cross-section of the local community, the team kept an observational record of broad age group, ethnicity and gender. To the right is a table summarising the profiles we were able to record. This provides a base indication of the groups that have been engaged with. It was not possible to record the profile of all attendees.

Consultation gaps

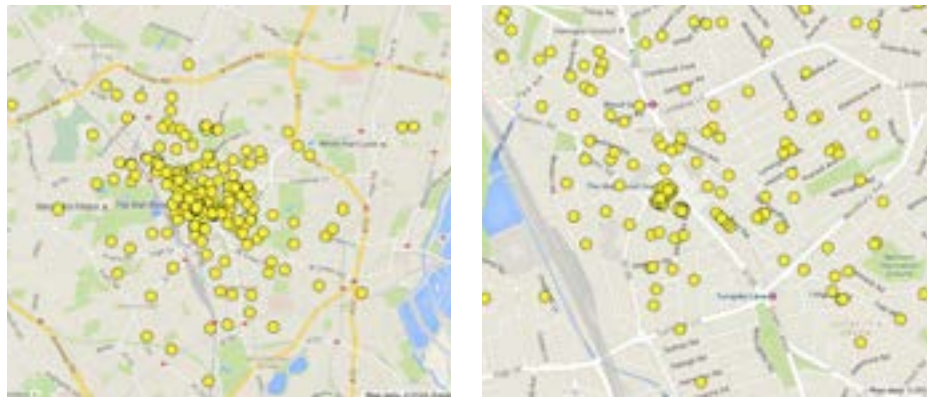
Soundings have noted that despite all efforts made, there are people living in certain areas impacted by the plans and people under the age of 25 that have not engaged well in the process.

Impacted areas include residents and landlords of the area around Caxton Road, residents of Page High estate, certain traders on the High Road and in the Mall.

In the next stage of consultation these groups will be targeted and appropriate means used to engage them.

Formal representations

Haringey has received 25 formal written representations (responses) from mainly public bodies and large landowners.



Consultation attendance maps - Stage 3A

STAGE 3A ATTENDANCE'S DEMOGRAPHICS			BOROUGH*	GAP
Gender				
Male	452	51.7%	50%	+1.7%
Female	422	48.3%	50%	-1.7%
Age				
Under 16	40	4.6%	20%	-15.4%
16-24	35	4%	12%	-8%
25-44	304	34.8%	39%	+4.2%
45-64	284	32.5%	20%	+12.5%
Over 65	88	10.1%	9%	+1.1%
Prefer not to say	1	0.1%	-	-
Disability**				
Disabled	21	2.4%	3%	-0.6%
Ethnicity***				
White	465	63.4%	61%	+2.4%
Others	268	36.6%	39%	-2.4%
Not known	135	-	-	-

*Borough data taken from the 2011 Census.

** Disability visible by the team or disability communicated on the forms.

*** Ethnicity percentages calculated for 733 participants.

All figures rounded to the nearest one decimal place, main analysis for 874 participants who took the online survey and/or attended a staffed session during the exhibition.

EVENTS	DATES	ATTENDANCE	LOCATIONS
CLG (Community Liaison Group) Preview options meeting	2 February	31	Wood Green Library
Door 2 door sessions • Impacted residents • Impacted traders • Cultural Quarter users	6 February 5,7,9 March 19 March	over 150* over 200* over 50*	Page High, around Caxton Road, Sky City High Road, Mall, Market, Library, Morrisons Cultural Quarter
Engagement pop-ups • Page High • Sky City	17 February 18 February	10 22	Page High outdoor communal area Sky City outdoor communal areas
Public exhibition Preview session Ward Councillors	22 February	4	Consultation Hub (vacant shop on High Road)
Public exhibition Open manned sessions	22 February 25 February 1 March 3 March 5 March 7 March 9 March 11 March 15 March 17 March 19 March	79 55 60 72 94 44 64 49 76 107 127	Consultation Hub (vacant shop on High Road)
Public exhibition Focused manned sessions • Council officers • Alexandra Palace Trust • Impacted traders • Business Forum members • Impacted residents Caxton Road • Sky City residents • Turkish-speaking residents • Asian Centre & Mosque • Cultural Quarter users • Youth • Disabled residents	4 March 9 March 17 March 22 March 24 March 26 March 29 March 30 March 30 March 31 March 31 March	19 5 16 5 1 22 23 4 33 10 7	Consultation Hub (vacant shop on High Road)
Public workshop on the four options	10 March	20	Consultation Hub (vacant shop on High Road)
Workshop on Transport and Movement	14 March	12	Consultation Hub (vacant shop on High Road)
Public online survey	22 February to 31 March	87	Online
Officers online survey	date? (LBH)	25	Online
TOTAL**		1588*	

* Number of people that have been spoken to

** To note, some people have participated in several events or surveys (estimation: a maximum of 100 people with an average of 2 times).

Facts and figures - Stage 3A



1100+

people engaged in total





CHAPTER 03

FINDINGS ON THE OPTIONS FOR A LONG-TERM PLAN FROM STATUTORY STAKEHOLDERS & LANDOWNERS

Introduction

Landowners (including freeholders and long leaseholders) of the area and statutory consultees (including major public bodies) are key partners for the plan as their agendas, policies, plans or recommendations can either accelerate or limit the regeneration of Wood Green.

The council received 22 written representations in response to the consultation on Wood Green planning document (AAP - Area Action Plan - Issues and Options - Regulation 18). These comprise 13 statutory consultees and 9 major local landowners.

The following findings report are separated into these two categories of respondents. A further four written representations from local people (local residents and artists from the Chocolate Factory) were received and these have been data based and analysed as part of the public consultation findings reported on in this document.

Responses from statutory stakeholders

The summary of representations below relates to the following respondents: GLA (Greater London Authority) and TfL (Transport for London), London Cycling Campaign, Historic England, Environment Agency, Sport England, Natural England, Thames Water Utilities Ltd, Metropolitan Police Service, Highways England, NHS London - Healthy Urban Development Unit, Haringey Liberal Democrats Party, Catherine West - Member of Parliament for Hornsey and Wood Green, Crouch End Neighbourhood Forum.

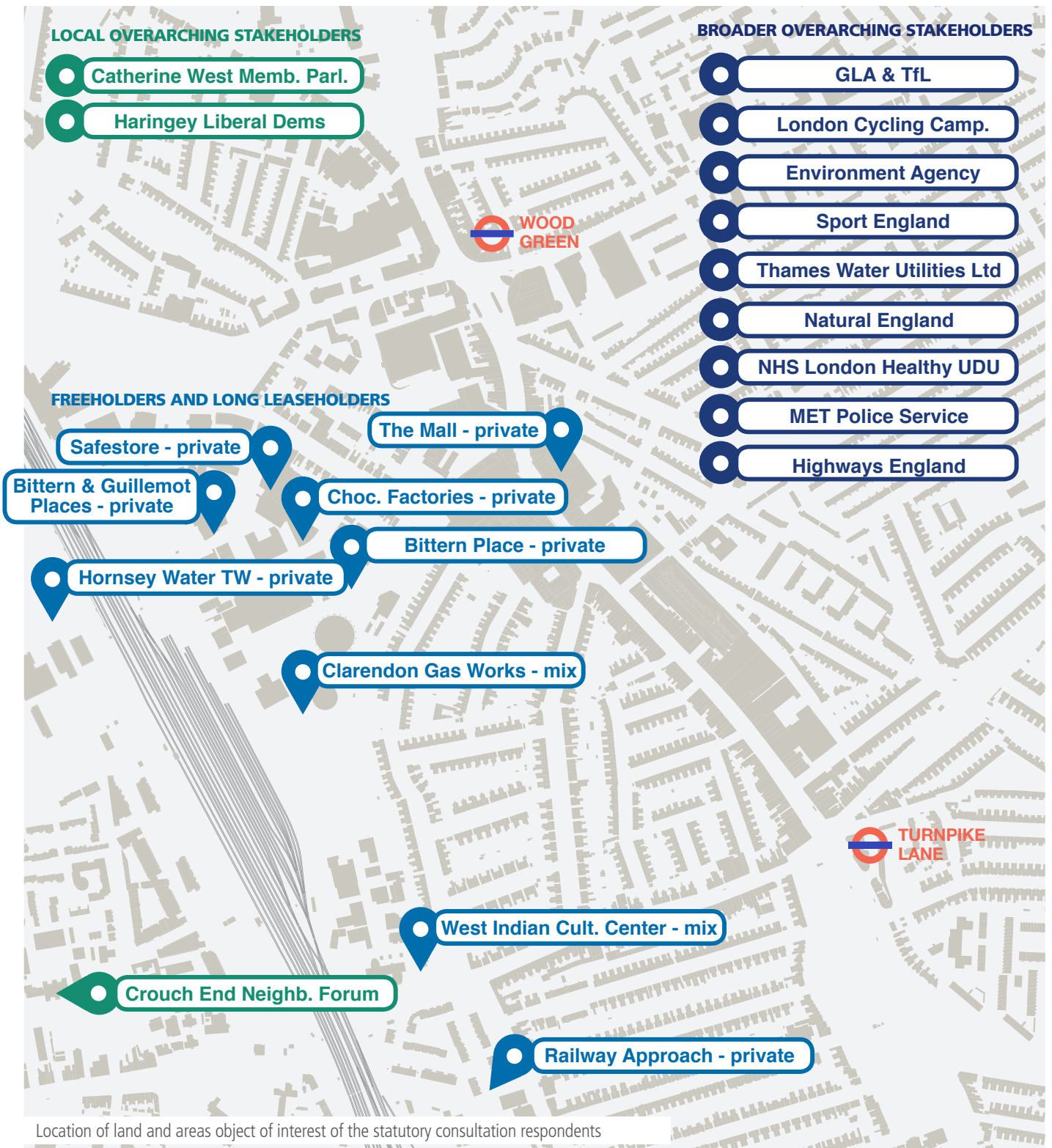
Stakeholders have mostly focused on certain topics only. Please find the details of their responses in Appendix 7.

Options and redevelopment process

With over 13 comments from 6 bodies, there was general support for the objectives of the AAP. Options 3 & 4 were seen to be best placed to deliver environmental improvements as well as to reach the target for homes, jobs and economic growth. TfL noted that they had no preference between Option 3 & 4 with regards to one or two Crossrail stations and will continue to explore both options.

Flexibility in the plan was noted as key as well as assurances on deliverability. A concern was mentioned over potential disruption and how this is managed.

WHICH LANDOWNERS AND STATUTORY STAKEH. HAVE RESPONDED TO THE FORMAL CONSULTATION?



 **Transport, connectivity and accessibility**

Five respondents commented regarding transport with 12 comments.

There was agreement that increased transport connectivity to central London and other employment areas resulting from Crossrail 2 will drive significant regeneration and housing benefits for the town centre. There was also support for improved east-west connectivity.

Some suggested that further consideration needs to be given to: capacity and connectivity of the bus network; a suitable location for a reprovided Arriva bus garage, additional bus standing space; and the prioritisation of sustainable transport modes such as walking and cycling. One stakeholder mentioned that two Crossrail 2 stations would benefit a larger number of people. A borough wide Transport Strategy was recommended.

 **Housing**


Three stakeholders commented on this subject. The GLA considered that the growth envisaged is in line with the council's projections and the London Plan (statutory spatial development strategy for the Greater London area). Other comments related to the need to reprovide housing and provide genuinely affordable homes. Some said that population projections are required.

 **Retail**

Concerns were expressed by two stakeholders over viability especially in relation to other North London centres and the need to safeguard other nearby district centres such as Crouch End. Also mentioned was the need to take account of changing shopping habits.

 **Employment**

It has been said by one respondent that there is a need to protect the community and cultural legacy by promoting the Cultural Quarter for affordable workspace and creativity.

 **Building density and height**

Four public bodies commented with regards to this topic. The GLA agreed in principle that Wood Green is an appropriate location for tall buildings. Concerns related to the impact of tall buildings on heritage assets, views of Alexandra Palace and to potential over development. A tall building validation study was recommended by one participant.

 **Community infrastructure**

This was the most commented topic with 13 comments from 8 consultees. It was noted that the council may wish to revise its CIL (Community Infrastructure Levy, planning tool for local authorities to help deliver infrastructure to support the development of their area) to reflect the uplift in values for public benefit and coordinate requirements per development.

It is questioned whether Crossrail 2 funding will impact on the ability to deliver social infrastructure. It was mentioned that commitments should be made regarding the provision of GP services and health care infrastructure and to ensure no net loss of playing fields, sports facilities and existing green spaces. These should be preserved and improved some said.

It was also suggested that the AAP should include a section mapping existing social infrastructure, quantifying existing health infrastructure and showing deprivation and health inequalities. There is a willingness to work together to test the plans and consider locations for social infrastructure such as health care.

Finally one consultee noted disappointment that no commitment was made for the provision of a swimming pool.

 **Environment**

19 comments linked to natural resources, health & wellbeing and environmental sustainability from 5 consultees with the following recommendations were received.

There should be a greater focus on water courses that could be brought to life, offer public access and have their water quality improved (with quality objectives). An idea put forward was that the Moselle river is de-culverted wherever possible.

The plan should consider the Thames River Basin Management Plan. It was also noted there is a critical drainage area in the northern part of the plan area and that Sustainable urban Drainage systems (SuDs) should be promoted.

It was said there is a need for Level 2 Flood Risk assessments for new sites and to update the SWOT (Strengths - Weaknesses - Opportunities & Threats) analysis to take account of critical water issues.

Finally, it was noted that a net increase in water demand should be taken in account.

Some respondents said there should be some measures to address the predictable increase of nitrogen emissions and pollution caused by traffic.

One respondent advised embedding the principle of active design into the plan to encourage active/healthy lifestyles.

Responses from landowners

The summary below is of the representations made by some of the key landowners (composed of freeholders and long leaseholders) in Wood Green.

Comments were particularly related to the following sites (please look at the map page 36): The Mall, The Chocolate Factory 1 & 2, Clarendon Road Gas Works Site and Olympia Trading Estate, West Indian Cultural Centre, Hornsey Water Treatment Works, Safestore Site, Railway Approach / Hampden Road, Guillemot Place and Bittern Place.

Options and redevelopment process

The ambitions presented in the AAP for Wood Green were positively received by all 13 respondents, with some stating specific support for the single Wood Green Crossrail 2 station and four respondents for Options 3 or 4 (1 or 2 Crossrail stations). Reasons included the potential that a single Crossrail 2 station would have to maximise connectivity and assist in delivering high levels of housing and workspace. There was a willingness generally to cooperate and work with the council to explore options as part of the plan development.

Flexibility

A number of responses questioned either the existing or proposed boundaries for the Town Centre and the Cultural Quarter defining the areas for retail and employment. A proposal from two landowners was made to extend the Cultural Quarter boundary to include the Metropolitan Police compound on Western Road and clarification was requested on its location along Coburg Road.

Some concerns were raised over the plan being too prescriptive and a risk to development. Flexibility was suggested with regards to the mix of affordable housing and workspace on one hand and economic and business growth on the other hand. It was suggested that the mechanism and form of achieving flexibility should be explained in the AAP.

Some respondents suggested changes within the SWOT (Strengths - Weaknesses - Opportunities - Threats) Analysis. Also a few stated that there appeared to be inconsistencies in land use references within the document. It was said there was need for clarification in the Site Allocations document on the bus garage re-location.

Connectivity and accessibility

There was general support for improving access to businesses, especially the east-west connectivity and the improved link to the Cultural Quarter proposed. This was considered as a positive ambition that would help attract high quality employers as well as improve links to Alexandra Palace. A number suggested that improvements were needed to the Penstock tunnel (going under the railway and linking Wood Green to Hornsey and Alexandra Palace). They also said that consideration should be given to the opportunity to link through the Thames Water Treatment Works, directly into the Park.

Housing

Three landowners expressed their wish to protect their development opportunities and suggested that housing and employment targets should be a minimum. The landowner of the Thames Water Treatment Works wished to affirm the suitability of this site for housing development, subject to Thames Water's operational clearance.



Employment

This was recognised as a key issue for the success of Wood Green. Stakeholders said generally that increasing housing and workspace provision would help delivering quality employment, economic prosperity and achieve Haringey's growth ambitions on employment and residential density. A number of respondents recognised the benefits of SME (Small and Medium-sized Enterprises) workspaces, the demand within Haringey for artist studios and the currently limited number of flexible workspaces within the area. They said that given its location and accessibility, Wood Green could become a more sought after location for SME workspace.

However it was also noted that viability and delivery should not be restricted by development control or capped rents nor current demand for SME workspace. It was also noted that SME workspace development needed to be funded through the intensification of sites and greater residential densities. One respondent raised concern over "workspace" being identified as the only proposed land use for the Cultural Quarter in terms of employment generating uses.



Building density and height

Ten comments on heights and density were made. It is noted that to deliver quality and additional workspace, this would require an increase in residential densities to the level identified in Table 3.2 of the London Plan. Some said they would like a more flexible and design-led approach that would take consideration of local context, character, proximity to public spaces and connection hubs. They also noted that height can be used to create markers and wayfinding devices.

A specific comment was made regarding the need for a landmark building to replace the historic gasholder (44m high). Others would like to see the density and heights on their sites increased to reflect the ambition for Wood Green to become an Opportunity Area and to deliver the quantum of new homes needed, including the area around the West Indian Cultural Centre and Hampden Road.

A number of comments noted the need to reconcile the AAP with the Local Plan Policy about views (DM5) that locates significant local views which cross Wood Green and could restrict the council's ability to deliver the quantity of development required.



Community infrastructure

A couple of consultees noted the need for a review of the CIL (Community Infrastructure Levy) to meet the aspirations of the AAP in terms of infrastructure and to undertake household projections. This is to ensure sufficient growth. Also it has been said that there was a need for further testing in terms of infrastructure requirements, quantum and mix of development, and viability.



Environment

Opportunities for environmental and ecological enhancement far and above any retention of the filter beds on the Thames Water Treatment Works site is recommended along with positive support for the New River Path and green network.



options



CHAPTER 04 FINDINGS ON THE OPTIONS FOR A LONG-TERM PLAN FROM THE COMMUNITY

Response to the options

Of the four broad options, the community was generally the happiest with Option 4 that was proposing the most significant transformation for Wood Green. The idea behind this option is to make it a remarkable centre in Haringey and an important hub in North London.

However the preferred option being currently developed by the project team is taking into account the comments made for all four options.

What participants liked the most in Option 4 was:

- An ambitious project responding to a need for change;
- The town square, the new library and central Crossrail 2 station;
- The redeveloped town centre including the removal of the current

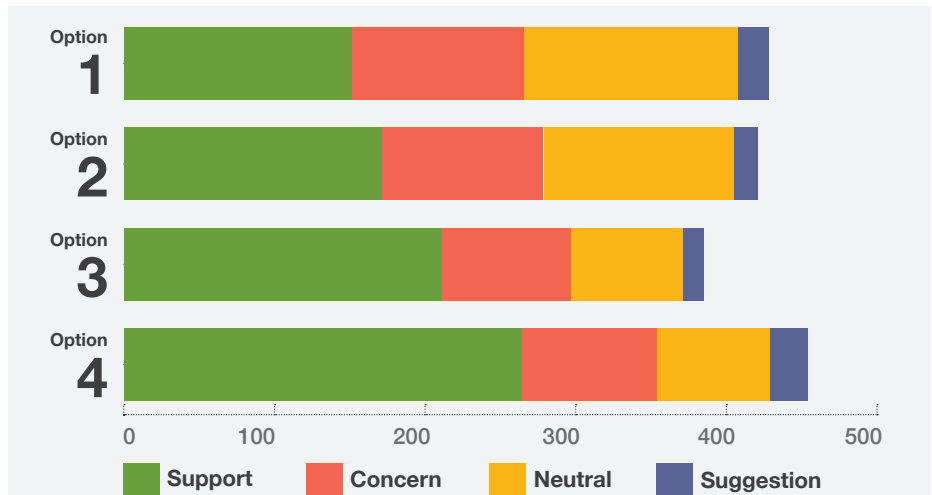
- Mall, with quality public spaces and an extension toward the Cultural Quarter;
- The green link and connection with Alexandra Palace and Park;
- The better mix of uses and retail offer.

There were also a few questions and suggestions about Option 4.

Several participants were very curious to see how such a renewed centre would look like and what the atmosphere would be. A few thought it would be good to keep or rebuild an indoor sheltered shopping area. A few had concerns about where the traffic would go if the High Road was made more pedestrian friendly.

Finally some participants asked where and how impacted residents and traders were going to be relocated. Also a few concerns were raised about the vertical combination of retail + housing uses and its impact on the residents quality of life.

HOW WELL DID EACH OPTION DO ACCORDING TO THE COMMUNITY?



Nature and amount of comments for each option (out of 1688 comments)

Response to the options versus the goals

On the online survey and feedback forms, participants could tell us how well each of the four options were doing against the four goals that bring the community's needs and the council's aspirations together.

As you can see below, of the 120 people who took this part of the survey, more felt that Option 4 matched each common goal better than the others.

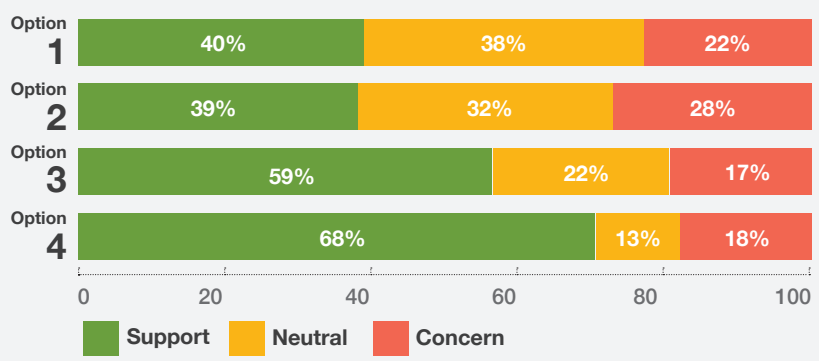
Goal 1. Improving the uses of the town centre (68% of support for Option 4),
Goal 2. Making unique places for people (66% of support for Option 4),

Goal 3. Creating a well connected place (66% of support for Option 4),

Goal 4. Developing Haringey's sustainable capital (60% of support for Option 4).

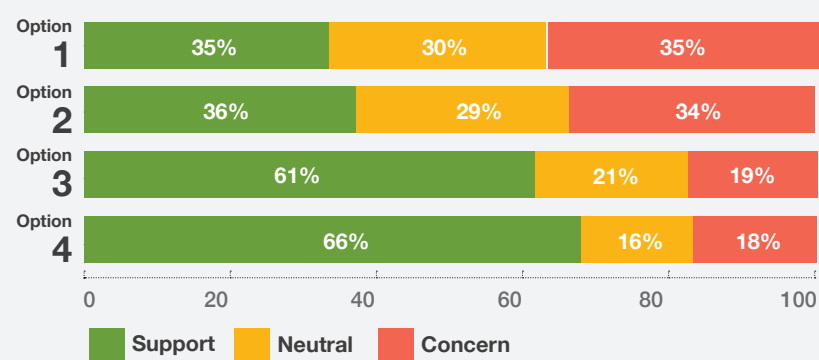
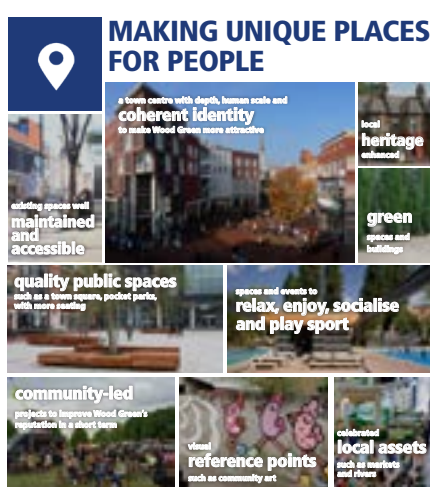
This reflects the community members' interest in an ambitious plan and 'readiness' for a significant change to improve Wood Green.

GOAL 1 - HOW WELL DID PEOPLE SAY THE OPTIONS IMPROVE THE USES OF WOOD GREEN TOWN CENTRE?



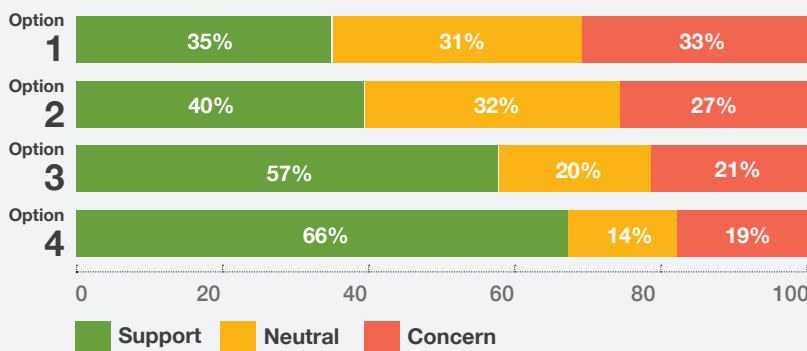
Options scoring by the community in terms of uses (out of 120 responses)

GOAL 2 - HOW WELL DID PEOPLE SAY THE OPTIONS MAKE UNIQUE PLACES FOR PEOPLE IN WOOD GREEN?



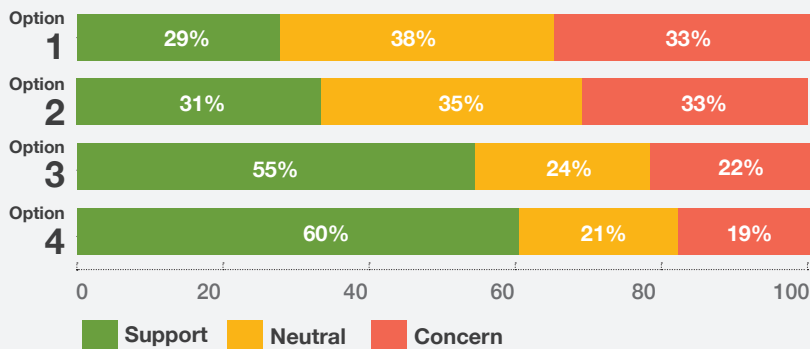
Options scoring by the community in terms of placemaking qualities (out of 113 responses)

GOAL 3 - HOW WELL DID PEOPLE SAY THE OPTIONS MAKE WOOD GREEN WELL CONNECTED?



Options scoring by the community in terms of connections (out of 113 responses)

GOAL 4 - HOW WELL DID PEOPLE SAY THE OPT. MAKE W.G. THE SUSTAINABLE CAPITAL OF HARINGEY?



Options scoring by the community in terms of social and environmental facilities (out of 114 resp.)



redevelopment

Comments on the redevelopment process

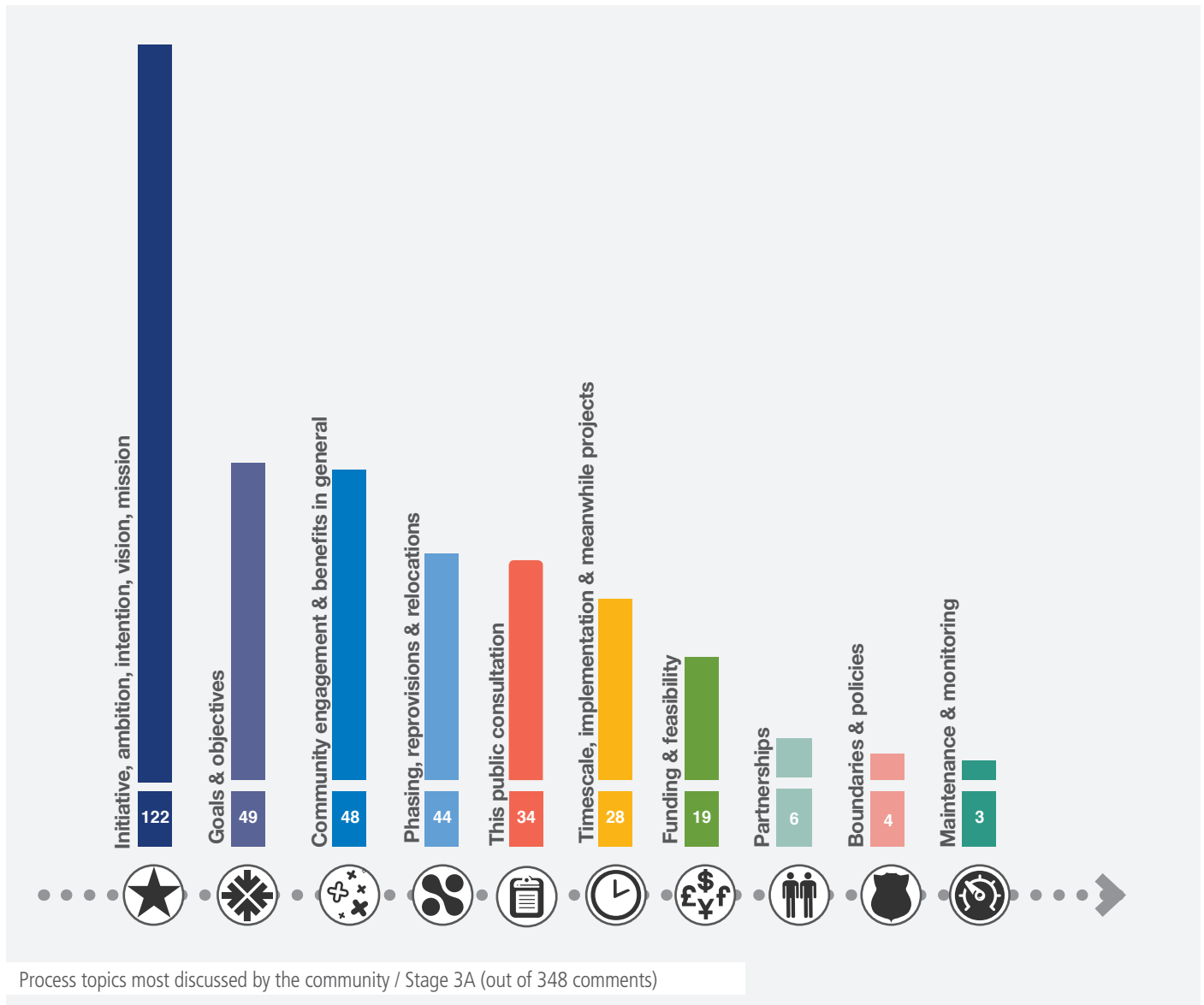
The bar chart below shows the most talked about topics in connection with the redevelopment process.

There were some interesting questions about the plan’s development and consultation’s process. See over for more information.

An FAQ (Frequently Asked Questions) booklet was available at the exhibition and online. Some questions were about aspects of the plan that are being developed in the next stage such as around delivery and phasing.

These elements will be subject to consultation in Stage 3B of the process. The FAQ will be updated as the process continues.

WHAT ARE THE MOST DISCUSSED TOPICS ABOUT THE PROCESS?





**Initiative, ambition,
intention, vision,
mission**
122 comments

+ SUPPORT

A large majority of people supported the intention, aspirations and ambitions of the plans (49) and said Wood Green is in desperate need of improvement.

Most people liked Option 4 (30) because it showed the highest ambition however some people thought Options 1 and 2 were better as they would be recession proof and less disruptive (9), and others liked Option 3 as a balance between disruption and change (7).

- CONCERNS

A number of residents raised concerns about demolishing the Mall and bridge (8).

Of the 4 options, Options 1 and 2 were the ones which most people felt lacked ambition (16).

A few felt that Option 4 does not provide enough certainty and may be too ambitious (3).



Goals & objectives
49 comments

+ SUPPORT

Overall, people agreed with the common goals of the plans (39), describing them as ambitious (3), studied and deliberate (1), and offering the chance for investment (1).

- CONCERNS

People worried about congestion and overcrowding (3), whilst others were concerned about the focus on public transport and traffic - either too little, or too much (2).



**Community
engagement & benefits
in general**
48 comments

+ SUPPORT

Many participants were in favour of short-term community-led projects and were ready to help deliver them (36).

- CONCERNS

There was concern that the plans would attract more corporate companies, rather than 'community-led' initiatives or ethical companies (5).

Some respondents were also concerned that there were few specific community benefits for the old and young in the plan (4).

There was also concern over how people who are relocated out of Wood Green could benefit from the changes (3).



Phasing, re-provisions & relocations

44 comments

+ SUPPORT

Some were supportive of relocation as an opportunity to have new housing tuned specially to their needs - e.g. disabled access (3).

- CONCERNS

There was some concern at the lack of clear information in the proposals as to how and what housing, retail and work space relocations and provisions would be made (21).

Sky City residents were worried about being relocated outside of the borough (2) and thus being separated from neighbours and communities (5).

Representatives of impacted facilities such as the Asian Centre were concerned about the future accessibility of their premises as easy access is currently a major incentive for their members (2).

SA resident from the Caxton Road area was worried that the council wouldn't buy the properties that need to be demolished for the plan for a fair price and would unfairly use its CPO - Compulsory Purchase Order powers (1).

? SUGGESTIONS

Some suggested that people living above the Mall - in Page High and Sky City estates - should be provided with accommodation within the area (2), and that this should be 'like-for-like' (5) and if possible with better outdoor areas.

There were also suggestions that reasonable alternative accommodation for Cultural Quarter artists should be offered as part of the plan (3).



This public consultation

34 comments

+ SUPPORT

Many commented that the information presented at the public consultation was useful (11), and that staff were helpful (8).

? SUGGESTIONS

A few suggestions were made to simplify the understanding of the options for instance with a comparison chart for the 4 different options, photos and 3D views (9).

Also some expressed the need for a project website (3).

A couple of comments described the consultation materials as being too detailed or not detailed enough (3).



Timescale, implementation & meanwhile projects

28 comments

- CONCERNS

The main concern was the disruption during the construction works (12) for instance about how Arriva would continue to deliver bus services or the decrease of income for shops.

Some participants were surprised that there was no indication about the timescale for each option (9).

A few suggested the regeneration should happen as fast as possible to quickly improve the area and prevent too long disruptions (4).

? SUGGESTIONS

There should be more short-term projects shown on the plan as quick wins for the area (2).

Someone said that the plan should be broken into smaller doable projects in case there are no investors interested or no Crossrail 2 stations coming (1).



Funding & feasibility 19 comments

+ SUPPORT

There was support for one Crossrail station, instead of two, if this would lower the cost of the development (2).

- CONCERNS

There was a fair amount of concern over the very large scale of the project, the cost and the long term implementation (7).

? SUGGESTIONS

Many people wanted to know more about how the regeneration scheme will be funded (10).



Partnerships 6 comments

- CONCERNS

Many people expressed concerns about the dependency of the plans on TFL decisions - e.g. for Crossrail 2 (5).

? SUGGESTIONS

There was one suggestion that TfL could change Wood Green to zone 2/3, as they have at Stratford (1).



Boundaries & policies 4 comments

- CONCERNS

Someone was unclear how the boundaries of the plan had been chosen (1).

? SUGGESTIONS

Some thought that boundaries of the plan should stretch further than Turnpike Lane (2).

There was a suggestion that there should be policies created to ensure there are enough affordable homes in the plan (1).

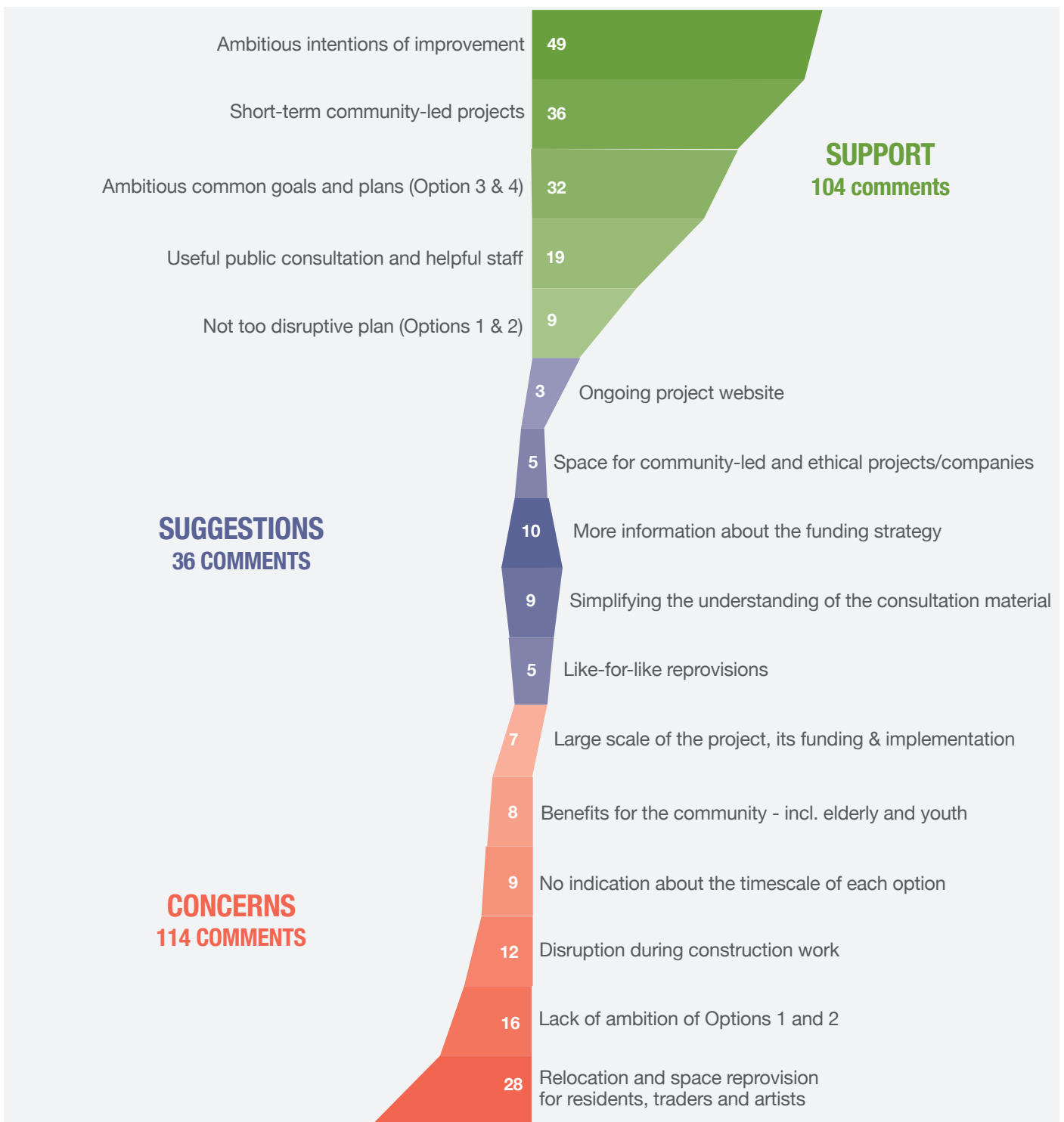


Maintenance & monitoring 3 comments

- CONCERNS

There were concerns that the current level of maintenance of the High Road and surrounding areas will not be enough to maintain the proposed Green Link and other new public spaces (3).

WHAT ARE THE HOTTEST TOPICS ABOUT THE REDEVELOPMENT PROCESS?



Top groupings of community comments on the process / Stage 3A (out of 348 comments)



town centre uses

Comments by uses

In this part of the report, we have grouped comments on all options by use or function, to inform the next stage of developing the preferred option.

The table below shows that the uses most discussed were about transport and parking, public spaces, housing and retail.

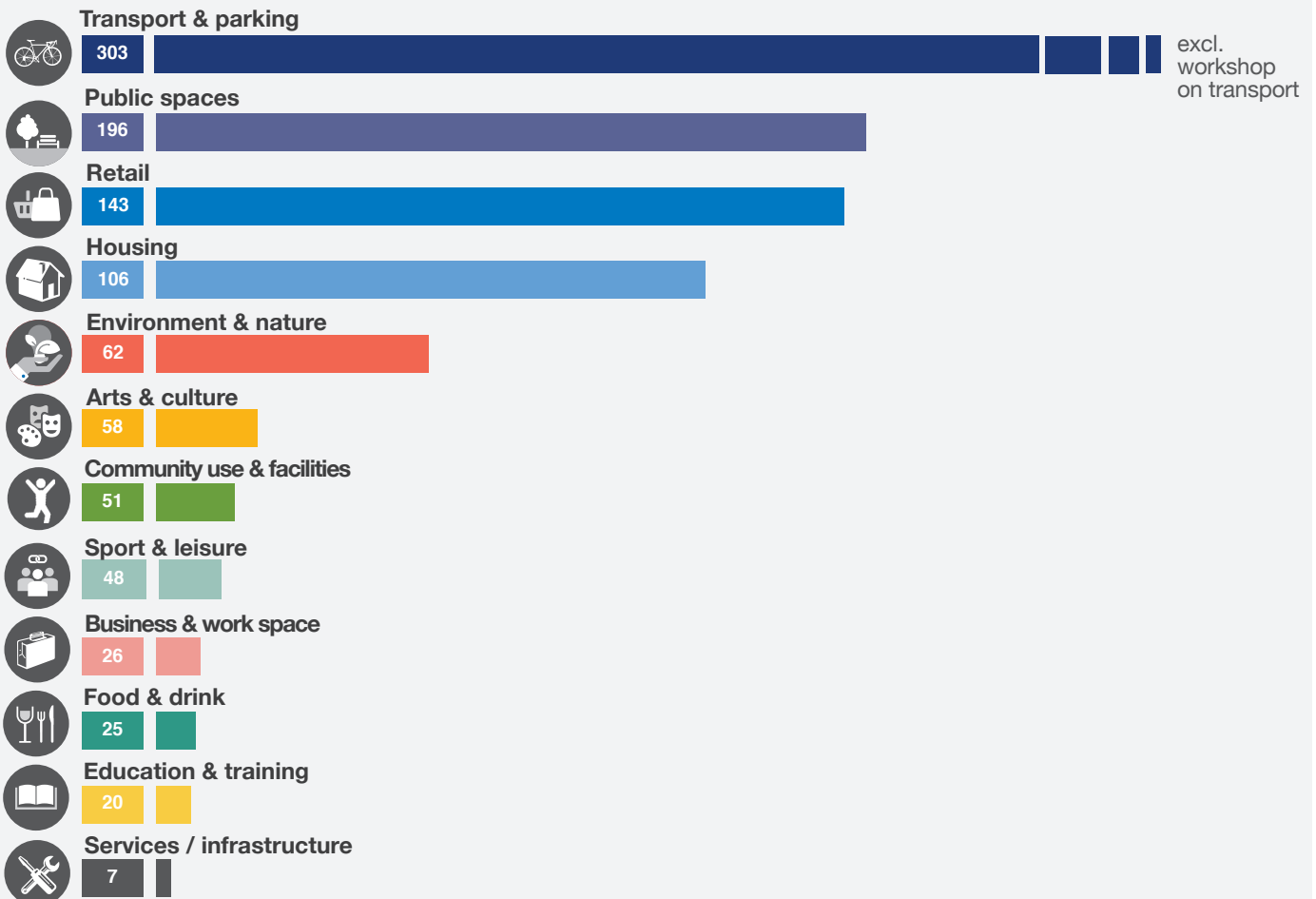
On transport and parking most comments were about Crossrail 2.

On public spaces there were mostly comments about the new town square and the linear park.

For housing, comments were generally about the new housing provision that should take in account the needs of existing residents.

Regarding retail, most of the comments were about the need for an improved mix of retail and views concerning the redevelopment of the Mall.

WHAT USE HAVE THE COMMUNITY MOST DISCUSSED?



Uses most discussed by the community / Stage 3A (out of a total of 1050 comments)



Transport & parking 303 comments

+ SUPPORT

Nearly double the amount of people favoured the one central Crossrail station because they felt it would better serve local people (41). 25 people, particularly those living around Turnpike Lane, preferred the two stations option (one at Alexandra Palace and one at Turnpike Lane).

Many felt that the plans supported more efficient transport networks and connections across Wood Green (25). Plans to improve the connectivity between Alexandra Palace, the Cultural Quarter and the High Road were popular with many residents (30).

A few people supported an increase in bus garage capacity either through redevelopment or relocation (8).

- CONCERNS

A lot of concerns focused around the possibility of the area becoming too dense and congested (16).

Concerns raised related to Crossrail 2. These included the decreased connection between Wood Green and Alexandra Palace with one Crossrail station (9); dependency on TfL decisions (4); and disruption during Crossrail 2 construction (1).

Some were concerned about the lack of parking provisions shown in the plans (11). Whilst others focused on the lack of traffic and cycling provision (7) and the risks of restricting traffic causing more problems (2).

? SUGGESTIONS

Almost half of the suggestions around transport were based on improving traffic management - on High Road, Hornsey Park Road and Bounds Green Road (37) and implementing cycling lanes and facilities (13).

A few respondents suggested that new and existing stations in the area need step free access (6), as well as more general improvements and expansions (4). Some recommended integrating the bus garage and new Crossrail station (6).

There were a handful of suggestions to increase East-West links to and from Alexandra Palace (6).

There was one suggestion of a Park and Ride for the area (1).



Public spaces 196 comments

+ SUPPORT

Most people support the idea of a new green, pedestrian friendly and well located town square (34), including places to sit, meet and relax (19).

The majority of those viewing the public exhibition supported Option 4 as the best proposal for improving the use of the town centre, and creating unique spaces for people (74).

Many people supported the idea of having a market (14), and most people wanted this to be outdoor (10).

- CONCERNS

A small number of participants highlighted that anti-social behaviour in new and existing public spaces needs to be addressed (3).

A few people mentioned that they do not want a market (5).

There were also a handful of comments expressing concerns about the design of the public spaces within the town centre - e.g not enough emphasis on public areas, design not very distinct. (4).

? SUGGESTIONS

There were suggestions that these public spaces should be kept clean and well maintained (8), and perhaps be sheltered (9).

Generally, people suggested public spaces with particular street features (15) such as water installations, street furniture, playgrounds, and new iconic landmarks.

There was a suggestion that there should be toilets at Ducketts Common (1).



Retail 143 comments

+ SUPPORT

For the most part, we saw support for replacing Shopping City with an entirely new structure, including the Mall bridge (29). A few people explicitly favoured a street based retail environment (5).

People generally wanted a broader range of shops including markets (17) and small independent businesses (2).

People also supported the rejuvenation and development of the High Road as seen in Options 1 and 2 (13).

- CONCERNS

Others expressed concerns about the plans being too retail-led (4); retail spreading beyond the High Road (1); or Wood Green becoming like Westfield in nature (2).

There was concern over the process of changing the retail offer, such as loss of profit for shop owners (3) and loss of jobs and workplaces in the area (1).

? SUGGESTIONS

Many suggestions we received about retail, proposing a better balanced mix of use and higher quality shops (27) and retail premises (5). Many comments also suggested a more creative industry with more independent shops (14) and for Wood Green to keep its unique character (4).

i STATEMENTS

Statements about the current state of Wood Green were mostly about the high amounts of low quality shops (17) and partly concerned with the area looking unattractive (3).



Housing 106 comments

+ SUPPORT

There was popular support for the building of new housing proposed in the plans, including the opportunity to re-house existing residents (31).

Some support came for housing within mixed use areas (3), such as with the Civic Centre and retail (3).

Overall, there was a good response to the housing plans with a number of responses linking the plans to improving Wood Green as a place to live either through quality of life (2), or being affordable and value for money (4).

- CONCERNS

The most frequent concerns around housing were based around housing becoming unaffordable (26).

? SUGGESTIONS

There were some comments that rehousing should be within the local area only (7). Additionally, people suggested that houses should be both affordable, and good quality (8).



Environment & nature 62 comments

+ SUPPORT

Overwhelmingly, there was support for the Linear Park and link (23), as well as more green public areas in Wood Green generally (24).

- CONCERNS

There was concern over the capacity of options 1 and 2 to improve and increase green space (2). There was also concern over the lack of focus on improving existing green spaces, not just new ones (2).

? SUGGESTIONS

Some suggestions were made for implementation of community gardens and pocket parks (6), as well as more greenery along the High Road (3).

Other suggestions included green roofs on new buildings (1), and relating the Green Link to the hidden Moselle River (1).



Arts & culture 58 comments

+ SUPPORT

Many supported improving accessibility to Alexandra Palace (14).

Others mentioned that they supported more arts spaces and cultural venues within the plans (9), including the inclusion of the Cultural Quarter in the redevelopment plans to make Wood Green a distinctive culture destination (10).

- CONCERNS

The main overall concern was the risk of Wood Green losing its cultural diversity (2) including the fear of losing two cinemas (1); no reference to the artist community in the plans (1), and no solid plan for a theatre (1).

? SUGGESTIONS

There was consensus from participants that rent rates in the Cultural Quarter should be affordable (4), and available to local artists and performers as coworking spaces (3).

Some people said that it would be good to have a large communal space at the library available for indoor markets, public performances and community-led projects (5).

Similarly, it was suggested there should be increased council support in supplying suitable spaces for artists from the Cultural Quarter (4).

One suggestion was to use containers as temporary work spaces (1), whilst others recommended setting up an open access print studio (2).

Someone also suggested that the new library could be a cultural one-stop shop in Wood Green combining the library with a museum containing the archives of Haringey. (1)



Community uses & facilities

51 comments

+ SUPPORT

There was general support for a new library and the main council offices being moved to the centre of Wood Green (17).

- CONCERNS

There was strong concern for the lack of service provision to cope with the increased population in the area (16).

? SUGGESTIONS

There were some comments suggesting that more youth services are needed (6). Similarly, people suggested more provision for older people (4).

Specific suggestions included creating an information centre in the area (2), facilitating a community land trust/co-op in the area (1), and combining the library and Civic Centre (1).

A couple of people were interested in the idea of having a large multigenerational cultural centre that would be used at different times of the day and the week (2).



Sports & leisure

48 comments

+ SUPPORT

In this area, we saw support for more space for outdoor activities built within the Linear Park (5).

We also saw a number of supportive comments for the development of the Mecca Bingo and Vue Cinema land for a leisure centre (4).

? SUGGESTIONS

Many suggestions pointed towards a swimming pool and leisure centre (19).

There were also suggestions for building of public space which could encourage leisure activities such as park gyms (3), as well as spaces for activities for children (3).

Specifically, suggestions for a theatre (2), festival (1), and skateboarding park (1), were mentioned.



Business & work space

26 comments

+ SUPPORT

Frequent comments showed support for the creation of more office space in Wood Green (2), including shared workspaces (2), to bring more employees into the area (2).

Some supported a general increase in investment in the area for work spaces (2), and others supported new workspaces being clustered at Wood Green and Turnpike Lane (2).

- CONCERNS

The main concerns raised were based around the envisioned gaps in the plans. These included lack of business opportunities including engineering and manufacturing (2); lack of balanced uses (1); and benefits to local people, rather than external companies (1).

High price of work space (3) and relocation during the development (1) was a concern for a few participants.

? SUGGESTIONS

Suggestions were mainly made on the role the council could play in the creation of work spaces in the regeneration. These included keeping rents at current prices (4); using planning tools to keep current studios intact (1); providing support for artists seeking suitable studios (2) and offering alternative accommodation to business who have to vacate (1).



Food & drinks 25 comments

+ SUPPORT

Some people supported the plan's better provision of restaurants and places to meet (2), including a market (3).

Others, liked the improved evening economy provision (3).

- CONCERNS

A small number of people showed concern that a more active evening economy could cause more anti-social behaviour (3). One respondent pointed to Option 1 as an example of a plan without enough cafe provision (1).

? SUGGESTIONS

Notably, most people suggested the need for an improved diversity of restaurants, cafes and bars (13).



Education & training 20 comments

- CONCERNS

There were a number of respondents who expressed the opinion that there was no need for a new library building (5). A couple of other comments were concerned about the possible Civic Centre demolition (2).

? SUGGESTIONS

Notable suggestions to improve the education and training prospects in the area included hosting a university or college campus in the area (3), opening up Crossrail 2 apprenticeships to Wood Green's youth (2), and adding a cafe to the library to make it a more appealing work space (1).



Technical services & infrastructure 7 comments

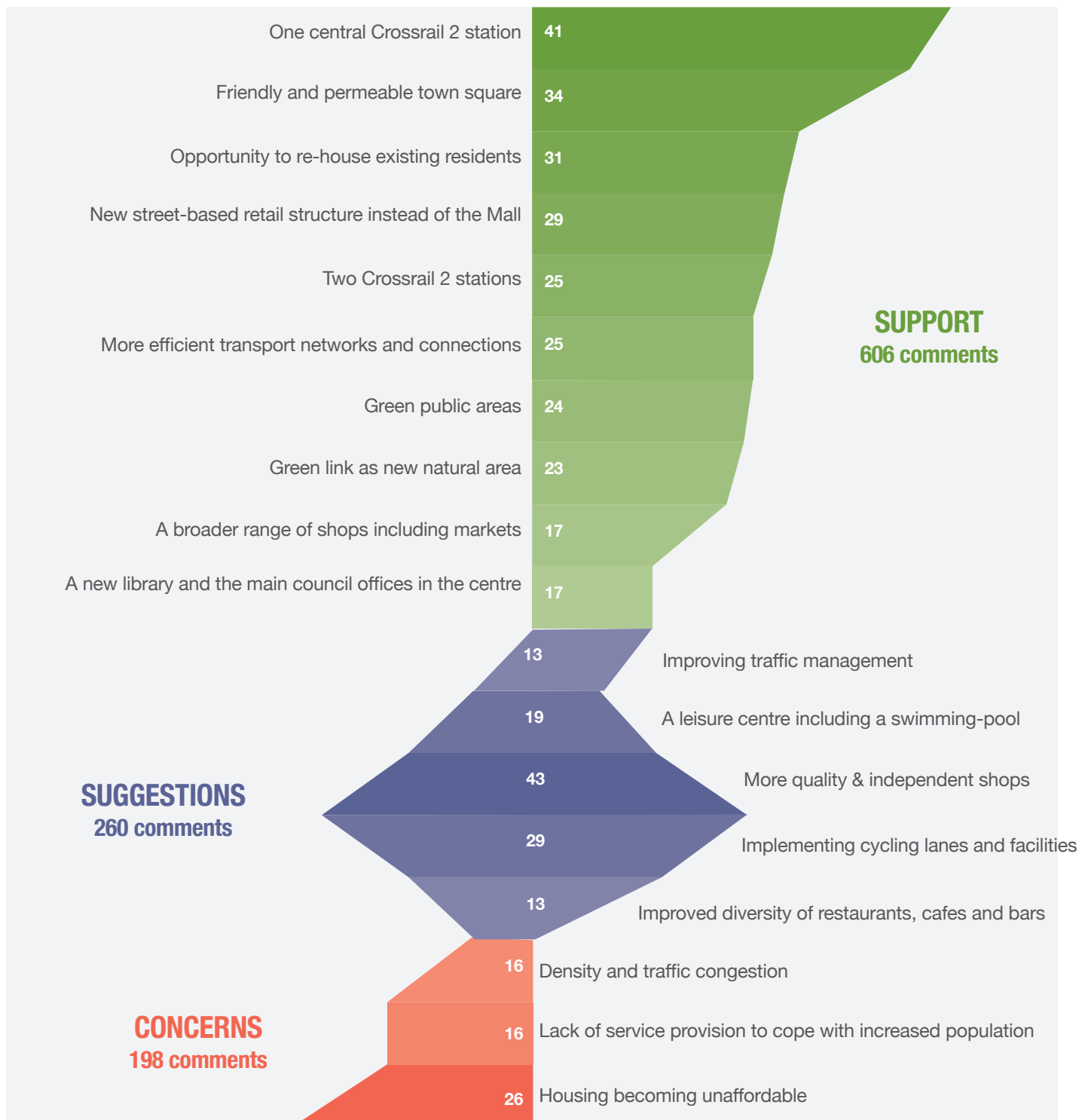
- CONCERNS

Mainly, respondents expressed concerns around litter and rubbish disposal services (4). Others were concerned with drainage and sewage provisions (2).

? SUGGESTIONS

There was one suggestion of using waste to create cleaner energy (1).

WHAT ARE THE HOTTEST TOPICS ABOUT THE TOWN CENTRE USES?



Top groupings of community comments on uses (out of 1074 comments)





town centre areas

Comments by areas

Different areas in Wood Green have been the subject of discussion. On the next pages you will find a description of the views of the community for each of the areas.

The areas most discussed were:

1. Wood Green Central Area
 - New town square and library,
 - New shopping and High Road,
 - The link to Alexandra Park,
 - The Cultural Quarter
2. Area around Turnpike Lane Station
3. North High Road
 - River park House,
 - Arriva bus garage,
 - Mecca Bingo hall,
 - Vue cinema
 - Civic Centre

WHICH AREAS HAVE THE COMMUNITY MOST DISCUSSED?



Areas most discussed by the community / Stage 3 A (out of 516 comments)



Around the new town square & library 188 comments

+ SUPPORT

The consensus from respondents was that Option 4 was the best option to develop Wood Green as Haringey's capital (68).

There was a strong indication that most people support a Crossrail 2 station in the middle of Wood Green (24).

A lot of responses also strongly supported having a proper, opened up town centre (30) that is green (6) and with the chance for a market (7) or evening activities (4).

Many also liked the redevelopment of the library in a central location (16) and combined with a new Civic Centre / Haringey's customer service (1).

- CONCERNS

Concerns were centred around tall buildings creating a dark and over-dense place (6).

There were a handful of comments which rejected proposals for a central Crossrail station (8). Some also were concerned about Sky City being removed (3).

Representatives of the Asian Centre expressed their need to stay central in Wood Green (2).

? SUGGESTIONS

There were a few suggestions that there should be more places to sit and socialise in the town centre (7).

People also wanted to see more greenery along the High Road (3).

Concerning the library, people suggested keeping it on the ground floor (1) and creating more community spaces inside (2).



The new shopping centre & the High Road 120 comments

+ SUPPORT

Many supported the idea of replacing Shopping City with a new structure (32).

Lots of residents also supported the proposal of a broader range of shops and restaurants on the High Road (13), and improving the High Street environment more generally (14).

Many supported traffic and road provisions shown in the plan, including wider streets (2), more cycling lanes (2), and The High Road being at least part pedestrianised (2).

A few comments supported the chance for independent retailers (5), markets (4) and improved evening economy (1).

- CONCERNS

Some people did show concerns over losing the Mall completely (14).

A few responses were concerned about having residential areas near the High Road or Mall (5).

? SUGGESTIONS

Many people recommended better quality shops in the changes (15).

There were a few suggestions to keep a variation on the mall, either refurbished (1), or a new more modern mall (1).

There were also ideas about putting Crossrail 2 inside the mall (1) and keeping the Mall's market Hall (1).

A few suggested creating more cycling facilities and lanes on the High Road (4), as well as zebra crossings and more traffic lights (2).

A few people focused their suggestions on keeping Wood Green's retail/High Road character (5).



The link to Alexandra Palace 71 comments

+ SUPPORT

The vast majority of people supported the idea of a new link towards Alexandra Palace (37), and many liked its linear design and park like qualities (9).

In general, people supported a better connection to Alexandra Palace either through sightlines (7), Crossrail 2 (3) or a bridge (3).

- CONCERNS

A few people were concerned by the proposed bridge above Hornsey reservoir as it would be expensive and the access to the Palace from there would still be difficult because the land is very steep (3).

There was a small amount of concern that the linear link vision seemed unlikely to be achieved because of the blocks that would need to be demolished to deliver it (1).

One person didn't want to see better links between Wood Green and Alexandra Park as it would diminish the character of each area (1).

? SUGGESTIONS

Some people suggested that the link should be pedestrianised (2), or that there should be better transport towards the Palace (1).

There were a couple of suggestions for a cycling path between the Palace and Wood Green (2), as well as more innovative solutions such as a cable car or electric vehicles (2).

 **The Cultural Quarter**
57 comments

+ SUPPORT

A large amount of support came for better access between Wood Green and the Cultural Quarter (14).

Alongside this, many also supported the redevelopment and improvement of the Cultural Quarter and Chocolate Factory (10).

- CONCERNS

There were concerns about the redevelopment of the Cultural Quarter, namely around the price of rents increasing (8), possibly causing vulnerable groups to be priced out (4).

There was also concern that there would be an overall loss of studio space in the Cultural Quarter (9).

? SUGGESTIONS

The main suggestion for this area was the work spaces should be affordable (7).

Specific suggestions included using containers as temporary work spaces (2 comment); improving cycling access in the cultural quarter (1) and more public art and sculpture in the area (1).

i STATEMENTS

The Cultural Quarter was cited as a unique space for artists and musicians (1).

 **Bus garage, River Park House, Vue Cinema area, Civic Centre**
43 comments

+ SUPPORT

There was some support for the idea of moving the bus garage (6) and increasing its capacity (1).

A little support for the redevelopment of the Civic Centre was seen (1), as well as the notion of housing on this site (1).

- CONCERNS

Mainly, concerns focused around housing being built above the bus garage, as it would be very noisy for residents (6).

There were also some concerns that the height of buildings proposed on this site and garage area were too tall (7).

There was concern about the parking provision for River Park House (1).

A number of people were against demolishing the Civic Centre (4), and using some of the area for housing developments (1).

? SUGGESTIONS

We also saw a number of supportive comments for the development of the Mecca Bingo and Vue Cinema land for a leisure centre (4).

A few suggestions were made to demolish River Park House (3).

Suggestions about the bus station included that it should be easily accessible (2) and perhaps integrated into the Crossrail station (1).

Two people suggested replacing the Vue cinema by, for instance, a swimming pool as the cinema is not using land in an optimal way (2).

Some people suggested it would be a good idea to relocate, improve or redevelop the travellers's site next to the Civic Centre (5),

 **Around Turnpike Lane station**
32 comments

+ SUPPORT

Support in this area was focused around the prospect of a Crossrail 2 station here, linking to Alexandra Palace (18).

- CONCERNS

A number of people expressed concerns that without a Crossrail 2 station at Turnpike Lane, this area would become further run down, especially with activity focused more on the centre of Wood Green (4).

People also were concerned at Turnpike Lane's lack of a landmark (3).

? SUGGESTIONS

Some respondents wanted to see cleaning and enhancing of Turnpike Lane facades in the plans (4).

Similarly, some also wanted to see more investment in the evening economy around Turnpike Lane station (5). Additionally, there was suggestions of further activities available on Duckett's Common (2).

 **Clarendon Road
& Park Malvern area**
4 comments

+ SUPPORT

There was a small amount of support for the plans' integration of Wood Green and Clarendon Road (1).

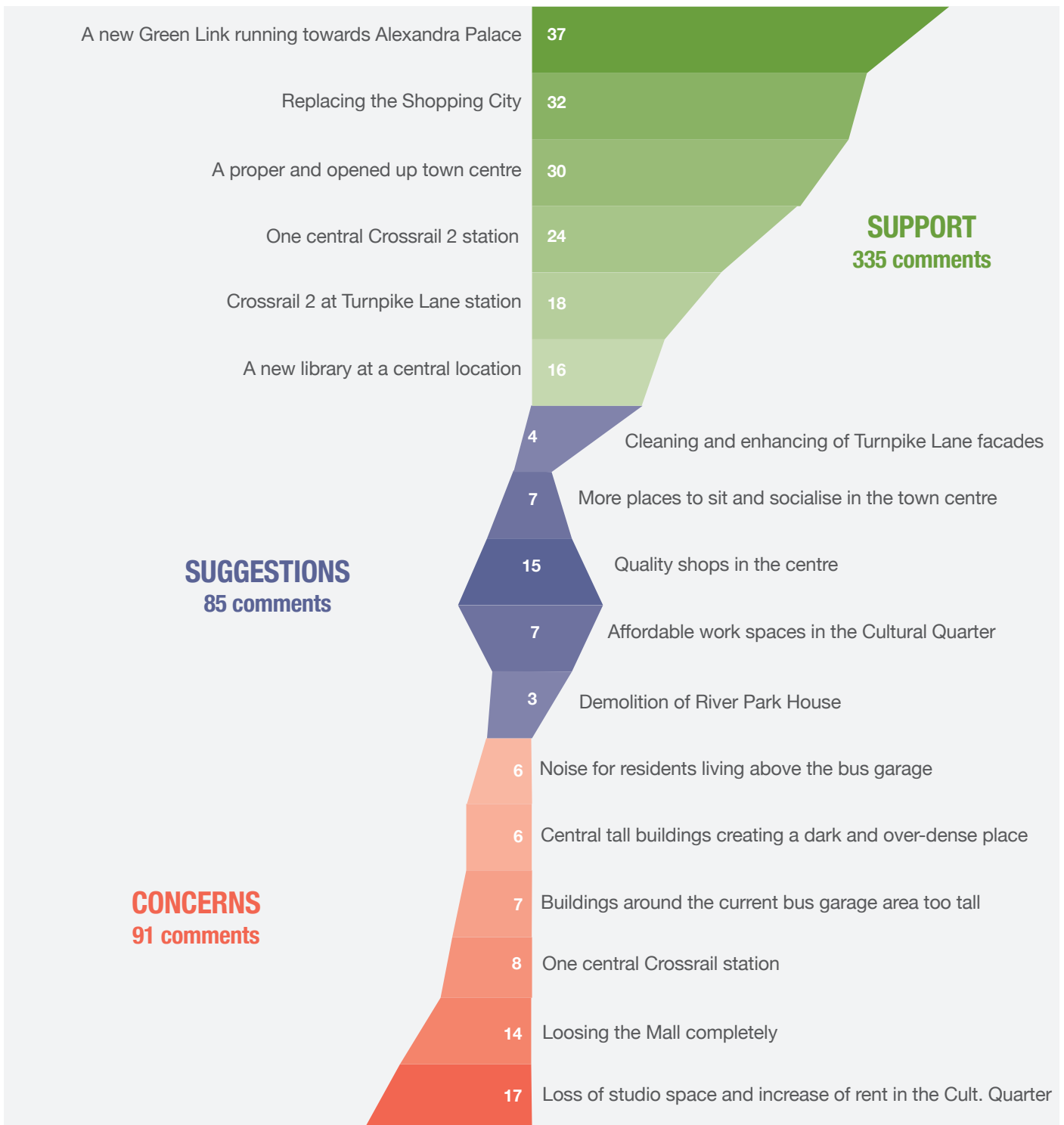
- CONCERNS

The main concerns from residents were around the impact changes to Clarendon Road would have on traffic and the movement of people in the area (2).

? SUGGESTIONS

Someone pointed to the need for a clear road layout along Clarendon Road (1).

WHAT ARE THE HOTTEST TOPICS ABOUT THE TOWN CENTRE AREAS?



Top groupings of community comments out of 516 comments on areas



placemaking

Comments by placemaking qualities

During Stage 3A of the consultation, the four options showed a high-level of possible plans for Wood Green's future. Already at this scale, it was possible to distinguish if the plans were creating placemaking qualities.

What is placemaking?

That is the ability - mostly through design - to create places that are good for people, the environment, the economics and the identity/culture of an area.

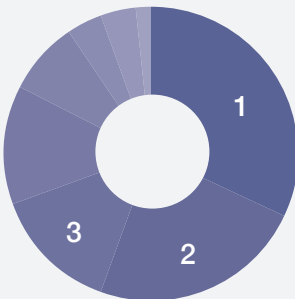
We are listing here what people have said about each of the qualities that are needed to make a good place (reference: matrix of spatial qualities - Werkpartners).

These are very important for the next stage of development of the plan which is called the 'preferred option'. This will show a more detailed option plan for the area.

WHAT ARE THE TOP 3 PLACEMAKING QUALITIES MOST DISCUSSED?

People's Well-being

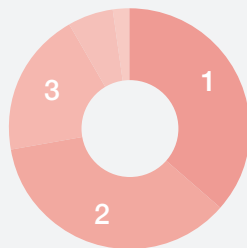
423 comments on social qualities



- 1 Walkability & accessibility**
Support for the green link, concern about overcrowding, suggestions about disabled and elderly access.
- 2 Human scale & slow city**
Support for the new town square, concern about tall buildings, suggestions about public spaces and features.
- 3 Health**
Concern about pollution and flytipping, suggestions about maintenance and bins provision.

Economic Vitality

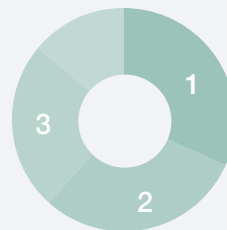
271 comments on economic qualities



- 1 Mix of uses**
Support for complementary uses to retail, suggestions of missing activities and buildings.
- 2 Community-based economy & affordability**
Support for affordable housing, works and retail space.
- 3 Generators & flows distributions**
Support for Crossrail 2 arrival to boost the local economy and concern about extra flows management.

Environment Friendliness

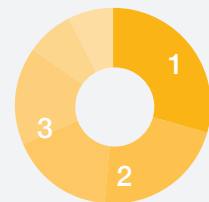
233 comments on environmental qualities



- 1 Resource management & clean environment**
Support for trees planting, better waste management and decreasing the traffic.
- 2 Biodiversity**
Support for more public, common and private green spaces and the upgrading of the existing parks.
- 3 Flexible design**
Support for multipurpose facilities and spaces for different people and at different times and suggestions for flexible new work, retail and housing units.

Local Character

179 comments on cultural qualities



- 1 Room for local initiatives**
Suggestions on providing space for local talents and giving room for community-led projects.
- 2 Distinctiveness, innovation & wayfinding**
Support for new particular and attractive spaces and facilities and suggestion about a bolder identity and more special elements.
- 3 Visual harmony**
Support for the Mall removal and the renovation of the High Road facades.

WB People's
Well-being

WB1. Walkability, area permeability & accessibility for all
136 comments

+ SUPPORT

Strong support came for the linear park that would very much open, give depth to the town centre (34) and create a better route to the Cultural Quarter (9).

Many people liked the town square idea that would provide a central public space accessible for all - especially combined with a new Crossrail 2 station (23).

A large number of participants supported the rearranged street pattern (11) and part pedestrianisation of the area (13), making it easier to access amenities and move around (6).

Several people said that it was good to move the bus garage somewhere else to give more space and safety to pedestrians (4).

Someone liked the new paths such as the one along the railway (1).

- CONCERNS

A number of people were concerned about overcrowding that would probably occur with the arrival of Crossrail 2 and the densification of the area (14).

A few people worried about the unclear or 'non-existent' traffic management strategy (5).

? SUGGESTIONS

Some people said that the town centre should be more accessible to the disabled and elderly (12) by avoiding steps, narrow openings and alleyways, short traffic light timings, by providing more benches, drop-in/drop-off areas and lifts, by keeping community facilities central in Wood Green.

There were a few suggestions about creating routes through the existing Mall (2) to make it more permeable and about well maintained streets at the back to make it safer (1).

WB2. Human scale & places to experience, slow down & rest

95 comments

+ SUPPORT

A large number of participants liked the idea of a green open town square to relax, sit and socialize (25) and the green link to do outdoor activities (8).

Some people said that having generally more leisure, recreational and cultural facilities for all - combined with more greenery and public spaces would improve the experience of Wood Green for its residents and visitors (18).

A number of people liked the new pattern of streets that are more human-scale and easy to get around (10).

- CONCERNS

A few people were concerned about the height of certain buildings and worried about them being oppressive (11).

? SUGGESTIONS

Several people said there should be more features to slow down people's rhythm and block out things like noise pollution such as water features, seating areas and outdoor cafes (8).

Some said that there should be even more parks and public spaces (8) and the existing spaces should be better maintained, furnished and equipped (2).

It has been said that the library should contain an indoor public space for different community activities (5).

WB3. Health
56 comments

? SUGGESTIONS

Many made suggestions on how to have cleaner streets by organising cleaning days, by having better maintenance services or by providing more (recycling) bins (20).

Lots of people liked public places and means of transport that would encourage a more active lifestyle in the area (18).

Even more people had an interest in the provision of healthier food in Wood Green (30) through for instance, a farmers market, a community kitchen, a new food corner or space to grow food locally.

- CONCERNS

A few people were concerned about the way to prevent flytipping (1), and more pollution because of the traffic that would increase with the developments (5).

WB4. Functionality

53 comments

+ SUPPORT

Many supported the creation of better and clearer links to make the area more functional (7), public spaces to meet and socialize (8) and a town square to refer to (20) with a main station, a library, a market and a central council presence.

- CONCERNS

Some people said that they found the Mall quite convenient as it was grouping several uses under one roof and that they would miss it if it had to go (3). A couple of people were afraid of losing the two cinemas (2).

? SUGGESTIONS

A small number of participants said there should be more public outdoor facilities that would create interactions such as Boris bikes, a large TV screen, a speakers corner or an outside gym (7).

Others said there should be more amenities spread throughout the residential developments such as GP's, schools and children's centres (4) and a large multigenerational cultural centre that would be used at different times of the day and the week (2).

WB5. People's security on the street

32 comments

+ SUPPORT

Many liked the idea of making the centre more pedestrian and cyclist friendly (8).

- CONCERNS

Some people had concerns about how to make the area more people friendly with the traffic that would increase with the development of the area (13).

? SUGGESTIONS

Some suggested that pedestrians should be given priority on the streets though improved crossings, street surfaces, railings and optimal pavement widths (6).

The idea to remove parking from the streets and provide more private parking spaces was mentioned (3).

A couple of participants said they liked the idea of a car-free High Road on Sundays (2).

WB6. People & weather

19 comments

- CONCERNS

Some consultees found it a pity to remove totally the Mall as it offers a practical shelter from the weather and a comfortable environment for shopping (3).

There was concern about the fact that tall buildings could overshadow public places and prevent people from enjoying the sun (13).

? SUGGESTIONS

A few suggested to either keep a part of the Mall or to create sheltered arcades, or to place canopies on the High Road (3).

WB7. People's sense of safety

16 comments

+ SUPPORT

Many liked to see the Mall and Sky City gone as they create unwelcoming, dark, dangerous and unaccessible spaces (5).

- CONCERNS

A number of consultees thought that new uses such as the outdoor market and evening venues would encourage anti-social behaviour (2).

? SUGGESTIONS

Several participants thought there should be better crime prevention supported by a police station in the centre of Wood Green (5).

A few said that the plan should address the dealers and gangs affecting the area around Turnpike Lane (3).

Someone said that there was space missing for an helicopter / air ambulance to land in case of emergency (1).

WB8. Peace & calm

16 comments

+ SUPPORT

Some people said they would like the area free from the noise caused by the traffic, the bus garage and delivery trucks (5).

- CONCERNS

A small number of people said that they were concerned about the combination of uses such as housing above the bus garage or above shops (5).

Others said the new developments would bring even more noise, traffic and pollution to the area (4). So would the construction works some said (2).

EV Economic
Vitality

EV1. Balanced mix of uses
99 comments

+ SUPPORT

People agree that providing the centre with more uses than retail would improve the economy (35). In particular they would like to see a leisure centre, a cultural centre, the market, work spaces as well as food & drink premises including in the evening.

There is a recognition that the redevelopment could bring the desired for improvement to the quality of shops (11).

- CONCERNS

A few people thought the focus was too much on retail (2).

? SUGGESTIONS

Some people said the mix could be even better if it would include the following: crafts and independent shops, a garden centre, more youth and leisure facilities, large department stores and a theatre (44).

A couple of participants suggested that space could be better divided to provide supplies and services where there are the most needed (7) for instance, by having a responsible allocation policy. Examples included vacant spaces available for community-led activities, estate agents not allowed on the High Road, more work space and housing in the Cultural Quarter.

EV2. Community-based economy & affordability
97 comments

+ SUPPORT

Lots of people said they would support truly affordable housing developments for local residents (21) and work space for the local community (8).

Someone said they like the new market space where the community could organise events (1).

- CONCERNS

Many participants said that they were worried that neither the new nor the existing homes and work spaces would be affordable for the local community (19) and that the area would be gentrified (8) and spaces would be sold for investment (3).

? SUGGESTIONS

People feel strongly that local artists and businesses should be helped to remain in Wood Green by providing them affordable studios and retail spaces (26). It was also suggested that the council should help locals create jobs and develop businesses rather than trying to attract developers and large employers (10).

Someone named alternative means of development such as community land trusts and cohousing or coworking places that would make it possible to keep the rent low (1).

EV3. Generators & flows of movement
53 comments

+ SUPPORT

Several participants said that a new Crossrail 2 station either in central Wood Green or at Turnpike Lane station would act as a magnet generate flows of people that would support the local economy (15).

Some people also said that the newly created connections such the linear park would encourage people to visit Wood Green (3) and facilitate the flows through the area (1).

Two consultees said that the library will play the role of a hub and reference point in the area (2).

Someone said that having a Crossrail 2 station at Alexandra Palace would bring more visitors to the venue (1).

- CONCERNS

Some people had concerns about how large flows of cars and people would be managed in such a dense area (27).

? SUGGESTIONS

A few people proposed the council should bring back department stores that would function as generators in the area and would be beneficial to smaller shops (4).

EV4. Ground floor life & activity
16 comments

+ SUPPORT

Some people said an open outdoor market would make the area livelier (4). Others said a new library with openings on the town square would also activate the centre (2). It was also mentioned that a street-based development with shops brought back on the ground level would bring more activity to the area (2). Someone said the better mix of services with more restaurants and bars open in the evening would increase activity and improve safety on the street (1).

? SUGGESTIONS

A few people suggested that there should be even more outdoor leisure activities in the plan (7) such as cafes in park and a street gym.

EV5. Uses clustering & consolidation
6 comments

+ SUPPORT

A number of people liked the idea of combining different uses around the library (5) such as a cafe, a museum, and customer services.

? SUGGESTIONS

There was an idea put forward that shops should be organised by theme with a few specialised areas for food with restaurants near to each other, or a beauty corner with some beauty shops all together (1).



EF1. Resources management & clean environment

74 comments

+ SUPPORT

Many people supported the several proposals to make the air and the streets cleaner such as planting trees (35), improving waste management (12), decreasing the traffic (27).

- CONCERNS

Lots of participants had concern about the fact that the new development would actually create an increase of traffic (28).

? SUGGESTIONS

A number of people said that is a need of upgrading the sewage, drainage utilities and water management systems in Wood Green (3).

A few consultees suggested that the recycling depot should stay at a walking distance from the town centre (2).

EF2. Biodiversity

70 comments

+ SUPPORT

A large number of participants liked the new green spaces provided by the plans and the project of greening the streets (35).

- CONCERNS

Some said that it was not clear enough how the existing parks would be improved (7).

There was concern about how the green space could be increased in the area is pace must be used for Crossrail stations (2).

? SUGGESTIONS

Many Sky City residents said that they would like to have green outdoor spaces, common and private (16).

Several participants said that there should even be more greenery

throughout the area (9). Examples ranged from community gardens to pockets parks via little green links and edible landscapes.

Someone said that Ducketts Common could be improved by creating wildflower meadows in the northern area and by implementing café in the park (1).

EF3. Flexible design

57 comments

+ SUPPORT

A large number of people liked the idea of multipurpose facilities such as the cultural centre, leisure centre and modern library that could offer spaces for community-led projects at different times and for different groups (26).

Also the new public spaces such as the town square and green link were seen by many as places where different activities could take place (14).

? SUGGESTIONS

Some participants said that the new retail or housing units should be flexible enough to host different kind of retailers or residents (8), including the disabled (7).

A couple of people said alternative means of transport such as cable cars to Alexandra Palace would be interesting and a low impact on the environment (2).

EF4. Bioclimatic design

32 comments

+ SUPPORT

Many people said that opening up the High Road including removing the Mall's bridge would bring more light to Wood Green (8).

- CONCERNS

Tall buildings will overshadow the area and public places such as the town square said a number of people (13) which could lower the capacity of new buildings to passively warm up.

? SUGGESTIONS

Some participants said they would like to have a sheltered open space to meet such as shopping arcades or a large open space in the library (8).

A few suggested that environmental friendly solutions such solar panels should be more often used (2).

Someone said that the 4600 homes needed should be eco-friendly buildings (1).

LC Local
Character

LC1. Room for local initiatives
53 comments

- CONCERNS

A couple of consultees said there was evidence that community-led regeneration plans were best at delivering successful long-term improvements and that the current options were not community led (2).

? SUGGESTIONS

It has been said several times that the new plan should offer space for the existing community of residents and artists to harness local talents and develop bottom up initiatives (13). Examples raised were: an enterprises incubator, a community land trust for artists, coworking, exhibition and performance spaces, community rooms at the library and public art.

It has also been said empty spaces should be made available to the community (2).

A large number of people had an interest in the short-term projects displayed at the public exhibition. 99 different projects have been picked up or described. 36 people have given their contact details to get involved in the development of such community-led projects (36).

LC2. Distinctiveness, innovation & wayfinding
45 comments

+ SUPPORT

Several consultees said that particular elements such as the green link, a new Crossrail 2 station, new public spaces, markets, cultural facilities - such as The Green Rooms - will make Wood Green a new attractive destination in London and a unique place residents are proud of (13).

Some participants said that the new urban structure replacing the Shopping City presented in Options 3 and 4 would provide Wood Green with a new distinctive identity (6).

It was mentioned that the plans would offer better views to the Alexandra Palace (3), that landmarks would make it easier to move around the place (4) and that removing the bridge would clear the view on the High Road (1).

- CONCERNS

A small number of individuals were concerned about big changes - such as the Mall being knocked down - which would significantly change the look and character of Wood Green (3).

? SUGGESTIONS

A number of people told us that there should be bolder and more special elements in the plan such as public art and iconic landmarks (8).

Some people said that besides landmarks / tall buildings, public art such as murals and sculptures would help provide local reference points as well (6).

Someone said the new shopping centre should be as attractive as before where people were travelling miles to come to Wood Green (1).

LC3. Visual harmony
39 comments

+ SUPPORT

Lots of people said that they were happy to see the outdated and oppressive Mall go and facades on High Road cleaned of clutter and improved (29).

- CONCERNS

There were a few concerns about the tall buildings proposed opposite Turnpike Lane station as it would be oppressive and out-of-place (1).

There was also someone worried about a totally new-built centre that might look very clinical. Retaining part of the Mall would resolve this (1).

? SUGGESTIONS

Suggestions about new buildings were that there should be a certain standard of quality (4) and that they should be well integrated with the existing (1) for instance, by gradually increasing the height toward the centre.

A few people said that planting trees, improving pavement surfaces and installing special features such as fountains would help very much to improve the visual appearance of public spaces and residential streets (3).

LC4. Integration with the existing & heritage-enhancement

29 comments

+ SUPPORT

People often said that it was good that historic facades on the High Road and listed buildings - such as the stations - would be kept and improved (9).

- CONCERNS

A couple of participants were concerned about distinctive buildings - such as the Mall, the Mall's bridge, some Victorian houses, the library and the gas works being demolished because these give character and are historical elements of Wood Green (15).

? SUGGESTIONS

A few people said that it would be better to restore the old buildings and protect the heritage, even from the 20th century (5).

LC5. Variety & serendipity

13 comments

+ SUPPORT

Some people said the new (or better promoted) varied mix of uses (7) - including (existing) cultural and makers activities - combined with new remarkable spaces (4) such as the linear park, pocket parks and green roofs in the Cultural Quarter would improve the experience of Wood Green.

- CONCERNS

A few people were afraid that the new buildings and uses would not offer enough variety as it looks like the plan offers mainly space for large chain stores and not independent or multicultural shops and spaces (2).



CHAPTER 05 FINDINGS ON SHORT-TERM PROJECTS IDEAS

As many of the participants had expressed an interest in short-term projects at the public exhibition in 2015, we had allocated a space for these during the second exhibition in spring 2016 which was about testing four broad options for Wood Green's Future plan.

Short-term projects brochure

A brochure (see in appendices) has been developed to show the projects that people chose as either an 'initiator', a person who suggested a project or a 'supporter', a person who backs a proposed project.

The intention is that these participants and others come together to form Wood Green LAB (Local Actions Band). In the spirit of exchange and with permission from participants, we have included contact details with each of the groups projects on page xx of the brochure.

The ideas that you will find in the brochure are often small-scale, quick-to-realise, low-budget, community-led projects.

For clarity we have grouped the projects into the following headings:

- Sustainable transport (38 interested)
- Incredible food (34 interested)
- Extraordinary events (33 interested)
- Cultural activities (32 interested)
- Distinctive retail (28 interested)
- Making & sharing economy (28 interested)
- Community socials (27 interested)
- Creative links & movement (27 interested)
- Active lifestyle (26 interested)
- Placemaking initiatives (23 interested)
- Attractive landmarks (21 interested)
- Playful spaces (20 interested)
- Housing for all (14 interested)

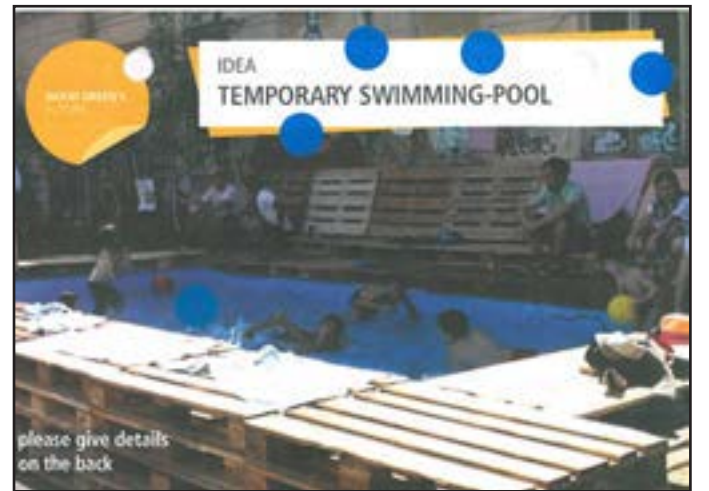
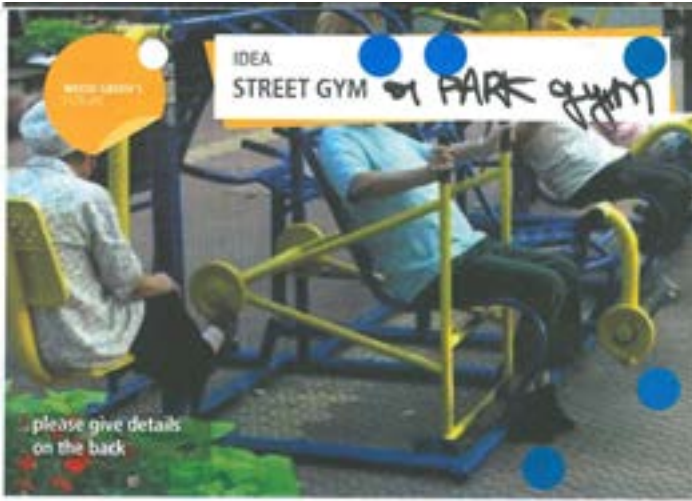
Please find a selection of the most popular ideas on the next pages.



A selection of the short-term projects displayed at the public exhibition



Most popular short-term projects ideas





Small Business Saturday
LOVE WOOD GREEN
SHOP WOOD GREEN
 Saturday 5th December 2015 – 11-5pm



N22OPENSTUDIOS
THE CHOCOLATE FACTORY
 8-10 NOVEMBER 2013
 ADMISSION FREE

N22 Open Studios 2013 has an its charity partner, Thea London, a charitable not-for-profit organisation working to protect and promote the welfare for disabled people. Please see us at all N22 events and enquiries to: www.n22openstudios.com



Explore Haringey
 by walking the route of
 one of its hidden rivers

THE MOSELLE
 crossing the borough from west to east



Existing community-led projects in Wood Green

Quick tips to go further

Below you can find a list of local groups and other kind of organisations that are able to help Wood Green communities to take their short-term project ideas further. These provide expertise, funding, material, networks, volunteers and/or land.

Organisations in or around Wood Green

- **Big Green Bookshop Education**
biggreeneducation.co.uk
- **Collage Arts** collage-arts.org
- **Friends of Ducketts Common**
duckettscommonhome.blogspot.co.uk
- **Haringey 4020**
haringey4020.org.uk
- **Haringey Allotments Forum**
haringeyallotmentforum.org.uk
- **Haringey Cycling Campaign**
haringeycyclists.org
- **Haringey Federation of Residents Associations**
haringeyresidents.org
- **Haringey Friends of Parks Forum**
haringeyfriendsofparks.org.uk
- **Haringey Solidarity Group**
haringey.org.uk
- **Harringay Online**
harringayonline.com
- **HAVCO - Haringey Association of Voluntary and Community Organisations**
havcoharingey.org.uk
- **Noel Park Team and Network**
noelparknet.ning.com
- **Park Malvern Residents Association** pmra.co.uk
- **Sustainable Haringey Wikispace**
sustainable-haringey.wikispaces.com
- **The Business Lounge**
haringey.gov.uk/business/advice-and-support/business-lounge
- **Tree Trust for Haringey**
tffh.org.uk
- **Turnpike Arts Group (TAG)**
turnpikeartgroup.co.uk/
- **Wood Green Business Forum**
haringey.gov.uk/regeneration/wood-green/boosting-local-business
- **Wood Green Central Library Groups** goo.gl/PAFfhg
- **Your own organisation!**

Organisations beyond Wood Green

- **Alec Dickson Trust**
alecdicksontrust.org.uk
- **Bags for Help Grants**
groundwork.org.uk/Sites/tescocommunityscheme
- **Better Block** betterblock.org
- **Big Lottery Fund & Awards for All**
biglotteryfund.org.uk
- **B&Q Waste Donation Scheme**
diy.com/corporate/community/waste-donation
- **Crowdfunder** crowdfunder.co.uk
- **Ford Britain Trust** ford.co.uk/fbtrust
- **Freecycle** freecycle.org
- **Good Gym** goodgym.org
- **Groundwork** groundwork.org.uk
- **Incredible Edible Network**
incredibleediblenetwork.org.uk
- **Living streets UK** livingstreets.org.uk
- **Locality** locality.org.uk
- **Morrisons Foundation**
morrisonfoundation.com
- **National Community Land Trust**
communitylandtrusts.org.uk
- **O2 Think Big** o2thinkbig.co.uk
- **Park(ing) Day** parkingday.org
- **Prince's Foundation**
princes-foundation.org
- **Small World Urbanism**
smallworldurbanism.com
- **Social Landscapes**
sociallandscapes.co.uk
- **Spacehive crowdfunding**
spacehive.com/Initiatives/mayoroflondon
- **Sustrans** sustrans.org.uk
- **The Edible Bus Stop**
theediblebusstop.org
- **The Tudor Trust** tudortrust.org.uk
- **Transition Towns Network**
transitionnetwork.org
- **UK Cohousing Network**
cohousing.org.uk
- **YouthBank** youthbank.org/Grants

Get involved

If you are interested in taking part in such community-led projects, connect with people that you can find in the Short-term projects brochure (appendix to this report) on page xx or contact Soundings on:

- ☎ 020 7729 1705
- @ WoodGreensFuture@soundingsoffice.com
- ✉ **Wood Green's Future**
at Soundings
148 Curtain Road
London EC2A 3AT



CHAPTER 06 NEXT STEPS

Wood Green LAB kick-off

Soundings is in contact with the 36 community members that are interested in initiating or supporting short-term projects. There will be an event organised this summer to launch the start of the Wood Green LAB (Local Actions Band). Please let us know if you want to be part of the group.

Coproduction process

The project team is now analysing the findings and integrates the different stakeholder views into the plan. To make sure the ideas, concerns and potentials of major stakeholders are taken well into account in the plan, the project team is working in a coproduction mode by area and topic with several relevant representatives, including members of the Community Liaison Group (CLG) in place.

Public consultations

Consultation Stage 3B

Informed by the consultation findings on the broad scenarios, the preferred plan will be consulted in late summer/autumn 2016, after which a Statement of Consultation will be produced, showing how the views of local people and stakeholders have helped shape the plans for Wood Green's Future.

Consultation Stage 4

The findings from the Stage 3 of the consultation process will be used to adapt and finalise the preferred plan. The plan will then be presented to the public and stakeholders in Stage 4. This will be the last stage of consultation on the wider Wood Green project. This last step will be only about the legal compliance of the document.

How to get involved

There are several ways of being involved in this long-term regeneration process:

- Become a member of your residents association or another specific local organisation that is part of Wood Green's Future plan's CLG - Community Liaison Group (see stakeholder map page 18);
- If your living area doesn't have a residents association, form a group (even informal) and elect representatives to be able to join the CLG.
- Become a member of the Wood Green LAB (Local Actions Band) to develop short-term projects. If you want to be contacted by members of the LAB group, please send an email to Soundings (see email below);
- Take part in the next statutory consultation (Stage 3B).

Contact us

To ask any questions or to let us know you would like to be involved and receive future updates, please contact the Wood Green's Future team at Soundings on:

☎ 020 7729 1705

@ WoodGreensFuture@soundingsoffice.com

✉ **Wood Green's Future**
at Soundings
148 Curtain Road
London EC2A 3AT

You can also keep up to date on the web by visiting:

www.haringey.gov.uk/woodgreen





APPENDICES INDEX

APPENDIX 1

Communication material brochure

APPENDIX 2

Exhibition and online survey
content brochure

APPENDIX 3

Booklets available online and
at the exhibition

APPENDIX 4

Consultation material brochure

APPENDIX 5

Short-term projects brochure

APPENDIX 6

Kids drawings brochure

APPENDIX 7


Statutory consultation details

This consultation report has been produced
by Soundings for the Council of Haringey:



 020 7729 1705

 WoodGreensFuture@
soundingsoffice.com

 Wood Green's Future
at Soundings
148 Curtain Road
London EC2A 3AT

WEB [www.haringey.gov.uk/
woodgreen](http://www.haringey.gov.uk/woodgreen)

Soundings