

## GUIDING PRINCIPLES FOR THE PROJECT



PRINCIPLE 1

Improve connectivity between the east and west of the borough through improved legibility and wayfinding on existing routes



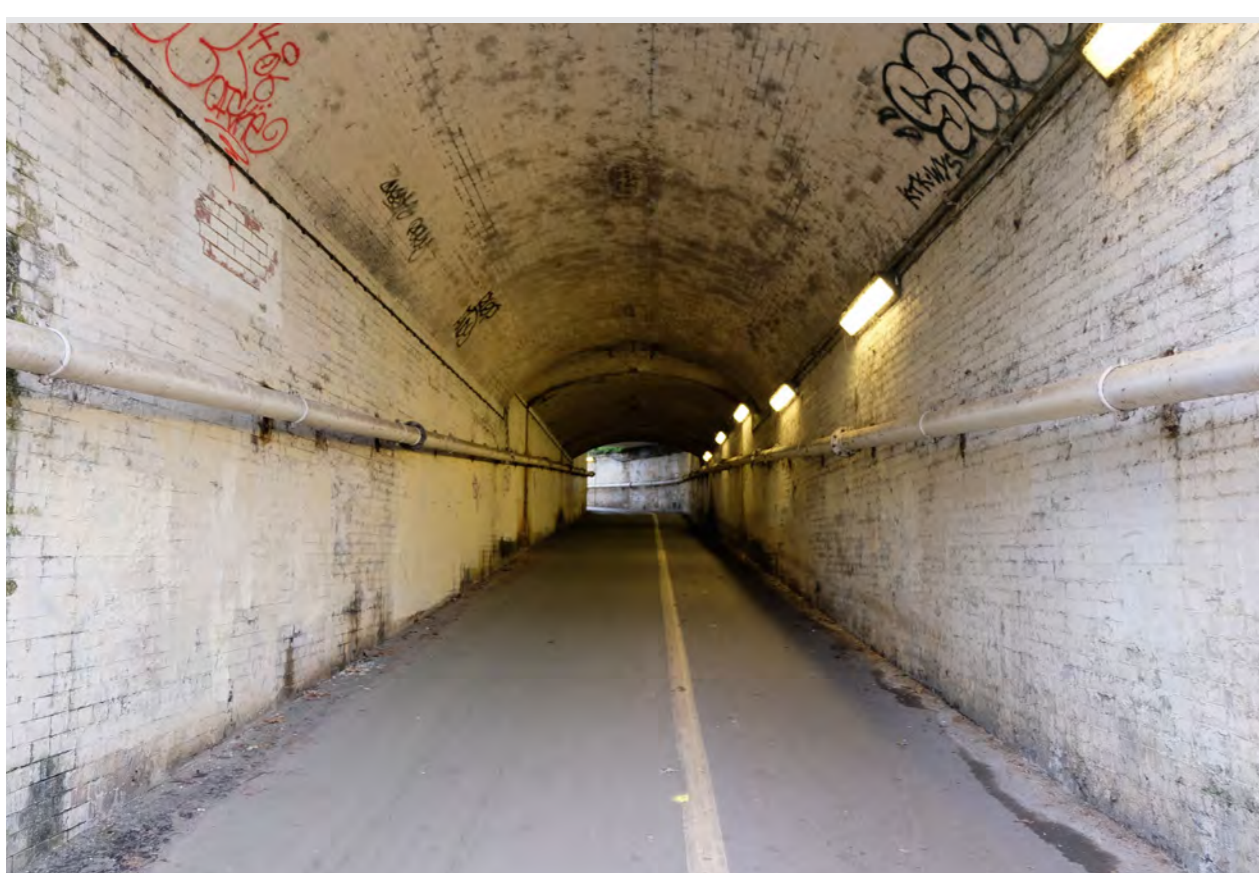
PRINCIPLE 2

Extend and enhance Haringey's routes for walking and cycling to increase access to green space across Haringey



PRINCIPLE 3

Celebrate the character and heritage of Wood Green through the integration of public artwork within the design



PRINCIPLE 4

Deliver practical and cost-effective drainage improvements to Penstock Tunnel



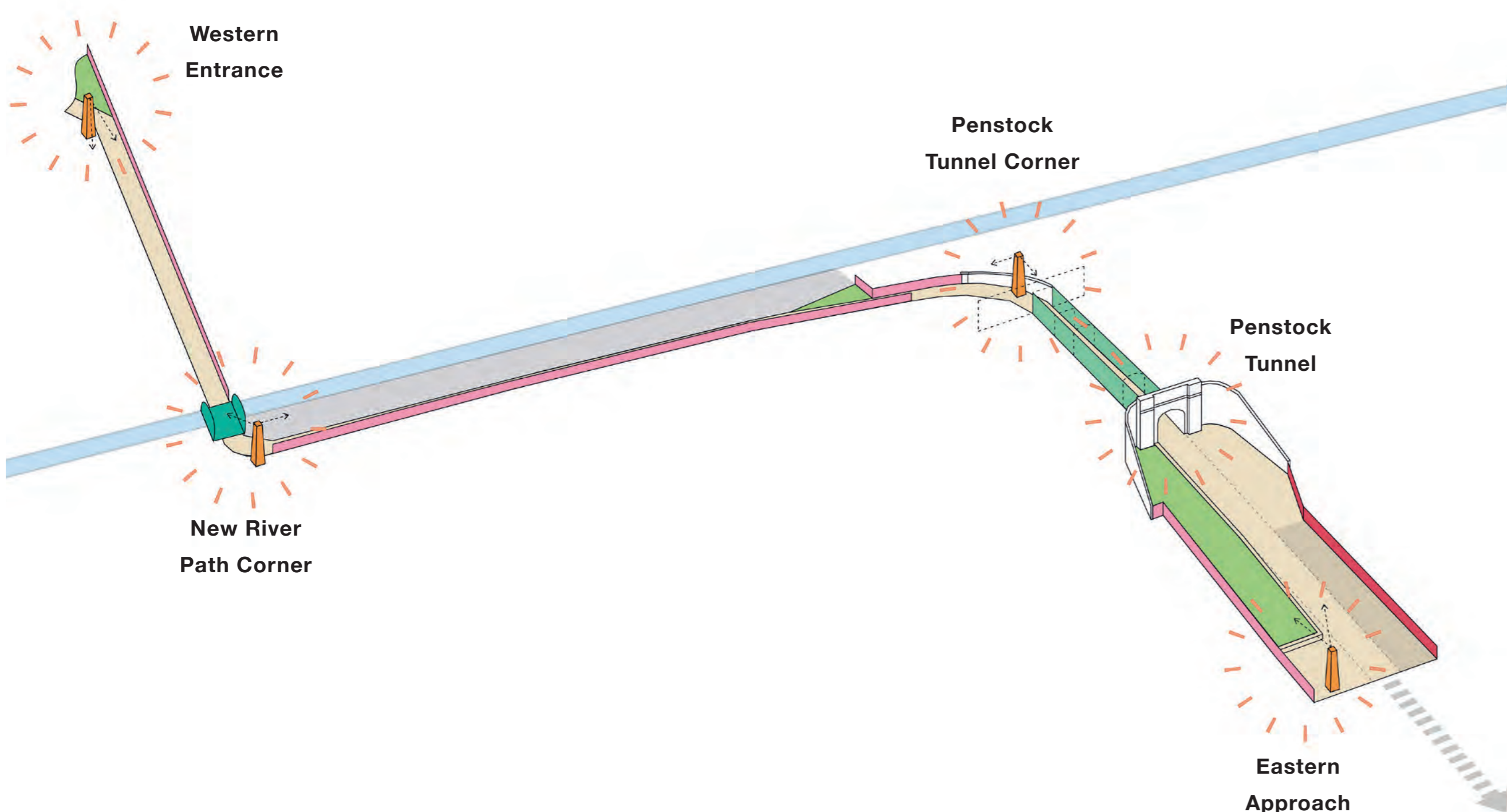
PRINCIPLE 5

Provide healthy, safe and accessible open space improvements for existing and new communities



PRINCIPLE 6

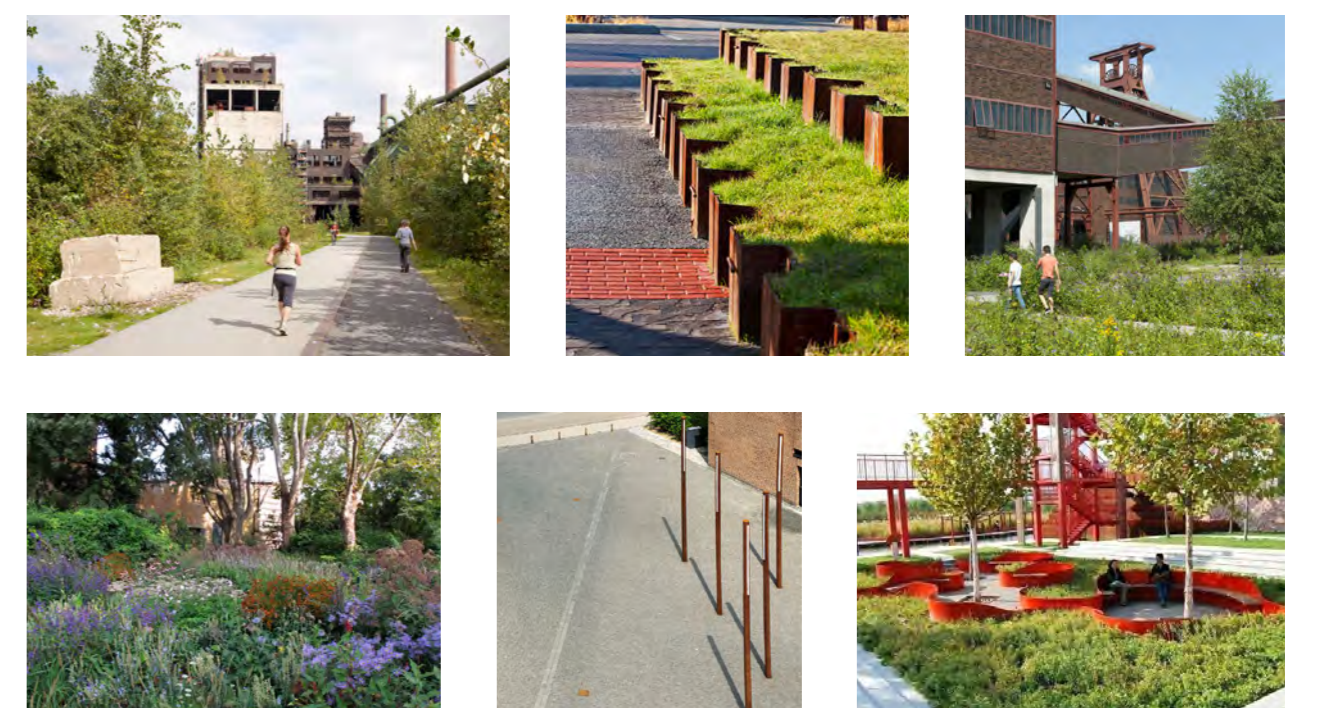
Encourage community participation to harness skills and resources from within the local community, local businesses and schools to shape positive change



The overarching strategy considers improvements to the pathways and boundaries along the length of the route to make it greener and more safe and pleasant to walk and cycle through. In addition there will be focussed placemaking moves in 5 key points along the route. These key areas are located at the end of long views along the route, serving as markers and allowing people to stop for a minute for a rest or to play or simply to reorientate themselves.

### A CONTINUOUS GREEN ROUTE

A series of elements will be considered in order to provide continuity across the length of the route, such as pathway and boundary treatments.



### PUNCTUATION IN KEY AREAS

5 key areas will contain enhanced features providing punctuation along the route. These will be places that people can dwell with seating and opportunities for play and activity.

