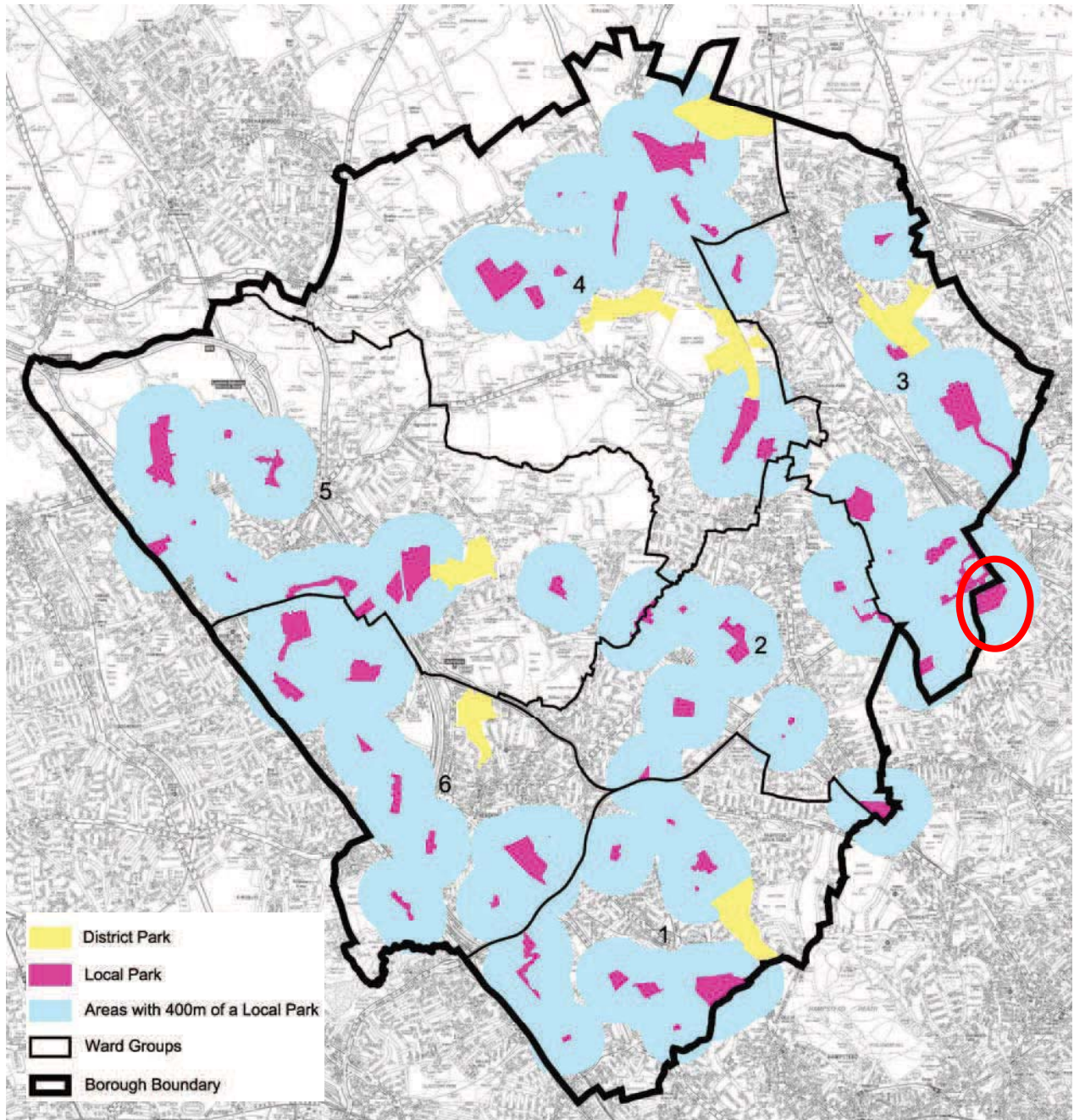


Map 10 – Public open space deficiency



- 12.2.7 Map 10 identifies those areas of the borough that are deficient in public open space. The more rural northern half of Barnet has the largest area of public open spaces but these are the least accessible. This provides a context for levels of formal provision and does not reflect informal use of open space nor patterns of usage of Barnet’s or neighbouring borough parks such as Hampstead Heath and Canons Park.
- 12.2.8 The Assessment review of areas of deficiency in public open space reflected those areas identified in Barnet’s 2006 Unitary Development Plan. Areas highlighted as having a deficiency in district parks i.e. being more than 1.2 kms from such a park included North and East Finchley, Brent Cross – Cricklewood and Edgware. Areas highlighted as having