

# HARINGEY HISTORIC STREET FURNITURE



LISTING

MARCH 2006

## 1 INTRODUCTION

### 1.1 COMMISSION

Jonathan A Law & Associates was commissioned to carry out an audit of the borough's historic street furniture by the Environmental Services Department of Haringey council, on 25 October 2005.

The survey was carried out between November 2005 and February 2006.

The survey was limited to visual inspection from accessible public spaces.

### 1.2 THE REPORT

The study included the identification and inspection of each item to provide a written and photographic record of its description and location, together with an assessment of its condition, and of the cost of urgent and full repairs.

The final report comprises the following elements, both in electronic and hard copy format:

1. Listing and photographic record (this document)
2. Spreadsheet record with repair costs

### 1.3 THE LISTING

Due to the nature of the exercise, the published Listing includes elements which are privately owned as well as council-owned items. Significant privately owned features include the Post Office pillar boxes and Telephone kiosks, both mounted within public spaces. Other minor features have been included which are clearly in private ownership, but considered to make a significant contribution to the public realm.

The Listing should be considered as a working draft. The maintenance of the electronic format allows for the addition of further historic features as they are brought to the council's attention.

# HARINGEY HISTORIC STREET FURNITURE

Ref	Category	Status	Name	Location	Grid Ref
1	Mon	-	Tottenham High Cross Monument	High Road Tottenham, junction with Monument Way	TQ337895

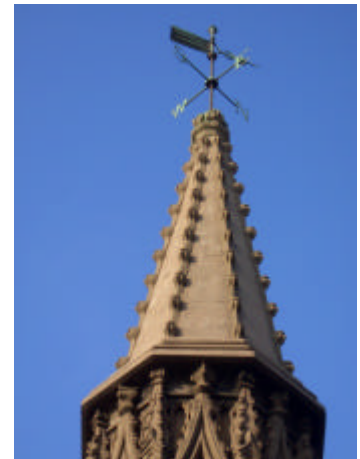
Date c1600 and 1809

Description A timber wayside marker has been recorded as being on this spot in 1409. (Once believed to be a cross marking the passage of the funeral cortege of Eleanor of Castile.) Rebuilt as octagonal brick column in four stages with weather vane c.1600 by Owen Wood, local resident and Dean of Amagh. The present stone and stuccoed Gothic appearance dates from 1809. Octagonal structure comprising plinth with heavy base, two stage shaft - the lower with lettered shields in diamond panels over cusped lancet arches, the upper developed as perpendicular arches between pinnacles supporting crocketed spire.

Inscription T.O.T.E.N.H.A.M

Setting On high ground, north of Tottenham Green. Setting isolated in traffic junction and cut by over-engineered bus lanes and pedestrian crossings. Ringed by plain railings.

Source *Tottenham and Wood Green - Past and Present*, C. Protz & D. Hedgecock, 2003, Sutton Publishing



# HARINGEY HISTORIC STREET FURNITURE

2 Mon Grade II Bounds Green Road Obelisk (Drinking fountain) Bounds Green Road, outside Prince of Wales PH TQ305908

Date 1880

Description Moved to present site in 1904. Tall obelisk of rough Cornish granite, set on a polished granite base with four bowls (none functional). Two octagonal steps with step-up blocks. Access panel in west face. Original ten-leaf bronze push button surround present on north bowl. Manhole adjacent to monument.

Inscription ERECTED IN AFFECTIONATE REMEMBRANCE OF MRS CATHERINE SMITHIES OF EARLHAM GROVE, WOOD GREEN FOUNDER OF THE "BAND OF MERCY" MOVEMENT AND PRESENTED BY HER FAMILY AND FRIENDS FOR THE USE OF THE PUBLIC.



Setting Attractively set in front of The Prince PH framed by large tree (recently pruned), in ring of tarmac. Potential for spotlighting.

Source *Ibid.*

3 Mon - Crouch End Clock Tower The Broadway, Crouch End TQ301884

Date 1894-95

Description Designed by F.G Knight as a testimonial to Henry Reader Williams (1822-97) chairman of the Local Board. Square red brick tower of three stages on an alternating red and cream terracotta plinth, on a Ragstone base, and supporting an octagonal cream terracotta drum and cupola with small corner turrets. Wethervane. Clockfaces in the upper stage of the tower with decorative brickwork frames and pediments. On west face bronze relief bust of Williams set in striped plinth above drinking fountain in ragstone base.

Inscription ERECTED BY SUBSCRIPTION IN APPRECIATION OF THE PUBLIC SERVICES RENDERED BY HENRY READER WILLIAMS, ESQ., J.P., TO THE DISTRICT OF HORNSEY DURING A PERIOD OF TWENTY ONE YEARS. JUNE 1895

Setting Good setting and focal point in busy centre of Crouch End.

Source *Crouch End - A Walk, B. Cherry & K. Gay, 2003, Hornsey Historical Society*



# HARINGEY HISTORIC STREET FURNITURE

4 Mon Grade II War Memorial Wood Green High Road TQ30939064

Date 1920

Description Memorial screen commemorating the 990 men of Wood Green who lost their lives in WWI. Curved Portland stone wall set on three York stone steps, of five panels with end piers, centre panel breaks forward and pedimented. Upper stage garlanded roundels carrying list of campaigns and set in gold mosaic panels between Ionic pilasters; lower stage pilasters in Doric order within bronze panels listing fallen either side of central stone tablet. Inscription added to WWII.

Inscription TO THE UNDYING MEMORY OF THE MEN OF WOOD GREEN WHO GAVE THEIR LIVES IN THE GREAT WAR 1914-1919.

Setting Facing across High Road to Church of St Michael Wood Green, and set back from pavement with well-maintained semicircle of paving and bedding. Discrete floodlighting. Shrub behind has been allowed to grow up above top of screen.

Source *Listed monuments (DCMS)*



5 Mon - War Memorial Stapleton Hall Road and Granville Road TQ309879

Date c.1920

Description Square gritstone base with corners chafering to octagonal top, and carrying inscription to fallen of WWI. Memorial cross(?) which it supported now removed, with tablet to WWII let into top.

Inscription IN MEMORY OF THE MEN OF THIS PARISH WHO GAVE THEIR LIVES IN THE GREAT WAR - JESU MERCY

Setting Set in small green space beside junction close to church and vicarage.

Source *Haringey GIS*



# HARINGEY HISTORIC STREET FURNITURE

6 Mon - War Memorial Corner of Tottenham High Road and, TQ337893  
Town Hall Approach N15

Date c.1919

Description Cenotaph of grey granite in the form of a tapered square pillar carrying a bronze sword and surmounted by a large bronze statue of winged angel holding a wreath. Stepped plinth on raised base surrounded by granite blocks linked by chains, with steps from south side.

Inscription ERECTED BY THE PEOPLE OF TOTTENHAM IN PROUD AND GRATEFUL MEMORY OF HER SONS WHO FELL IN THE GREAT WAR 1914 - 1918 1939 - 1945

Setting Good setting at south corner of green space. Floodlighting present.

Source JALA



7 Fountain Grade II Display Fountain Priory Park, Crouch End TQ301891  
facing Grove Road

Date c.1880

Description Granite centrepiece to Priory Park comprising high level vase discharging into large central bowl above vast octagonal granite basin. Basin with four attached bowls and pair of shields. Granite steps/benches to perimeter.

Inscription None

Setting Reduction of perimeter levels has exposed edge of footings. Basin earth filled and obscured by ivy growth.

Source *Listed monuments (DCMS)*



8 DFountain Grade II Metcalf Memorial Drinking fountain Priory Park, Crouch End, TQ30108890  
adjacent Middle Lane

Date 1879

Description Grey granite. Round polished bowl on a moulded drum base with rough shaft, on octagonal step. Broad *base* rises from centre of bowl with centre band and decorated base locating water fittings - not present. Access panel to N face. Drum base crudely set in concrete as additional step.

Inscription THE GIFT OF C T P METCALF 1879

Setting Set in corner of park close to SE entrance, possibly relocated.

Source *Listed monuments (DCMS)*



# HARINGEY HISTORIC STREET FURNITURE

9 D Fountain Grade II Queens Avenue cattle trough and drinking fountain Queens Avenue close to junction with Muswell Hill Broadway TQ287897

Date Late 19th Century

Description Polished grey (de Lank) granite; 9'6" trough with swept head supporting bowl, two granite blocks and granite dog bowl under. High quality example.

Inscription METROPOLITAN DRINKING FOUNTAIN & CATTLE TROUGH ASSOCIATION - IN MEMORY OF THE LATE DAVID KIDD OF LEYTON

Setting Set at pavement edge aside wide granite kerb and adjacent to K series telephone kiosk and plane tree.

Source *Haringey GIS*



10 DFountain - Barratt Drinking Fountain Wood Green Common TQ306902

Date 1930

Description Grey granite bowl of plain round form on swept pedestal; moulded base combined with four step-up blocks. All on octagonal granite base of two steps. Original centre (vase?) to bowl missing.

Inscription ERECTED TO THE MEMORY OF G. W. BARRATT ESQ CHAIRMAN OF BARRATT & Co LTD. 1930

Setting Centre piece of Wood Green Common. Surrounded by unnecessary crazy paving border in tarmac ring.

Source *JALA*



11 DFountain - Cattle Trough Off High Road Wood Green, opposite 7 Gladstone Avenue TQ310902

Date Late 19th Century

Description Plain-ended grey granite trough on two base blocks with bollards facing road. No fittings.

Inscription METROPOLITAN DRINKING FOUNTAIN AND CATTLE TROUGH ASSOCIATION

Setting Edge of pavement at head of side road off High Road; i.e. close to original cattle drove route.

Source *Tottenham and Wood Green - Past and Present*, C. Protz & D. Hedgecock, 2003, Sutton Publishing



# HARINGEY HISTORIC STREET FURNITURE

12 DFountain Grade II Wood Green cattle trough and drinking fountain In front of (O'Rafferty's) PH, corner of King's Road and High Road, Wood Green TQ308908

Date 1901

Description Double-sided structure with cattle trough facing open space (market) outside PH, drinking fountain and dog bowl facing pavement. Granite base including trough, with generously bracketed Portland stone fountain head supporting pink granite bowls front and back, with split pediment - the central feature (obelisk?) now missing. Devil's head feeds water into bowl on animal side.

Inscription METROPOLITAN DRINKING FOUNTAIN AND CATTLE TROUGH ASSOCIATION

Setting Siting of fountain relates to space outside PH. This space run down and damaged by routing of services etc.

Source *Stroud Green and Finsbury Park - A Walk, K. Gay, 2002, Hornsey Historical Society*



13 DFountain - Cattle trough and drinking fountain At entrance to 881 High Road Tottenham TQ338917

Date 1880

Description Granite trough 9'3" long with drinking bowl at head, raised on plain granite blocks and protected with two granite bollards. Fittings gone bar waste linking bowl to trough.

Inscription METROPOLITAN DRINKING FOUNTAIN AND CATTLE TROUGH ASSOCIATION MISS ELLEN REARDONS BEQUEST IN MEMORY OF HER FATHER MOTHER AND SISTER DANIEL ELIZABETH AND MARGARET REARDON 1880

Setting Apparently relocated. At edge of wide entrance to factory unit, and visually vulnerable.

Source -



14 DFountain - Cattle trough Chapman's Green, Granville Road, Stroud Green N4 TQ.....

Date c1880

Description Awaits identification

Inscription -

Setting Awaits identification

Source (GLIAS)



# HARINGEY HISTORIC STREET FURNITURE

15 DFountain - Cattle Trough Tottenham High Road N17 TQ336892

Date Late 19th Century

Description Grey granite plain-ended trough on blocks. 9' 5" long. Fittings missing.

Inscription METROPOLITAN DRINKING FOUNTAIN AND CATTLE TROUGH ASSOCIATION

Setting At edge of busy highway.

Source



16 DFountain - Cattle Trough Nightingale Road and Finsbury Road, N22 TQ3059010

Date Late 19th Century

Description Grey granite plain-ended trough on blocks with single bollard to kerb side. Apparently with dog bowl under. Fittings missing. Fixing marks for plaque at one end.

Inscription METROPOLITAN DRINKING FOUNTAIN AND CATTLE TROUGH ASSOCIATION

Setting Edge of pavement, next to open space.

Source *Greater London Industrial Archaeological Society (GLIAS).*



17 DFountain Grade II Hornsey Drinking Trough High Street Hornsey TQ305893

Date Late 19th Century

Description Granite rectangular trough 9' long, with chamfered base on tall granite blocks with protective bollards breaking line of kerb stones. Dog tray under.

Inscription METROPOLITAN DRINKING FOUNTAIN AND CATTLE TROUGH ASSOCIATION. HIS TENDER MERCIES ARE OVER ALL HIS WORKS.

Setting Curious grouping with drinking fountain and lamp standard at edge of ancient waste ground opposite church.

Source *Listed monuments*



# HARINGEY HISTORIC STREET FURNITURE

18 DFountain Grade II Hornsey Drinking Fountain High Street Hornsey TQ305893

Date 1863

Description Small, chamfered, pink granite obelisk mounted on heavy grey granite plinth with moulded cap and sloping chamfered edges. Semi-circular pink granite bowl attached to plinth, cups and chain missing. Filled cast iron dog trough below.

Inscription PRESENTED TO THE PARISH OF HORNSEY BY MARIA HAWKES WARE 1863. THE FEAR OF THE LORD IS THE FOUNTAIN OF LIFE.

Setting Set in rough earth/mortar border with granite kerb edge. Curious grouping with cattle trough and lamp standard at edge of ancient waste ground opposite church.

Source *Listed monuments*



19 DFountain - Cattle Trough Located at Parks Patrol Yard close to Hornsey Gate, Endymion Road TQ315875

Date 1920's?

Description Relatively late concrete trough, with no base blocks or fittings.

Inscription METROPOLITAN DRINKING FOUNTAIN AND CATTLE TROUGH ASSOCIATION

Setting Apparently relocated (from Hornsey Gate?) to Parks Depot entrance.

Source -



20 DFountain - Cattle Trough Cross Monument Archway Road at junction with Church Road, N6 TQ282882

Date 19th Century

Description Granite rectangular trough 9'6" long with chamfered base on 2 granite blocks; end with semi-circular bowl attached. Dog bowl under. No fittings present.

Inscription METROPOLITAN DRINKING FOUNTAIN AND CATTLE TROUGH ASSOCIATION

Setting Set in widened paving outside police station.

Source Greater London Industrial Archaeological Society (GLIAS).



# HARINGEY HISTORIC STREET FURNITURE

21 B Marker - Parish Marker Outside No.3 Stapleton Hall Road TQ307874

Date 1887

Description Small round-headed, cast iron post, marking the Islington and Hornsey boundary.

Inscription 1887 HORNSEY PARISH No.218??  
GILBERT BROOKS(?) HENRY REID (?)  
CHURCHWARDENS Etc

Setting Back of pavement. Innocuous.

Source Ibid.



22 B Marker - Parish Markers Craven Park Road at junction with Stamford Hill N15 TQ337880

Date 1860 and 1879

Description Pair of CI markers one of half round head pattern, one as post with curved top. Earlier stone tablet set into side wall of corner building.

Inscription The BOUNDARY OF The PARISH OF ST JOHN HACKNEY...

Setting Back of pavement.

Source -



23 B Marker - Parish Marker Newland Road, N8, opposite No.4 TQ302897

Date 1887

Description Single cast iron marker of half-round headed pattern. Setting parish boundary at rear edge of kerbstone.

Inscription BH ...SUNK IN THE GROUND 7FT 2INS S OF THIS PLATE

Setting At back of pavement backing onto recreation ground..

Source -



24 B Marker - Parish Marker Muswell Road, N10, outside No.64 TQ289900

Date 1885

Description Cast iron headstone pattern marker.

Inscription WOOD GREEN PARISH ...?... 1885

Setting Against garden wall at rear of pavement

Source -



# HARINGEY HISTORIC STREET FURNITURE

25 B Marker - Parish Marker Palace Court Gardens, N10, opposite No.20. TQ290899

Date 1934  
 Description Pair of plates; LH plain rectangular cast aluminium on strap legs, RH cast iron with half-round head.  
 Inscription BOROUGH OF WOOD GREEN 1934  
 1934 B.H. No.335  
 Setting Against garden wall at rear of pavement  
 Source -



26 B Marker - Parish Marker Dukes Avenue, N10, outside No.64 TQ2909892

Date 1934  
 Description Single cast iron marker of half-round headed pattern.  
 Inscription 1934 B.H. No.336  
 Setting Against garden wall at rear of pavement  
 Source -



27 B Marker - Parish Markers Brampton Park Road, close to junction with Burghley Road TQ312898

Date 1887 and 1895  
 Description Small square cast iron Wood Green Parish marker to east of taller round-headed, cast iron marker for Hornsey Parish boundary. Both carrying names of Overseers, Hornsey with additional Churchwarden and Vestry Clerk  
 Inscription "WOOD GREEN PARISH... 1895." and "1887 HORNSEY PARISH No.21..etc."  
 Setting Pair set either side of finger signpost.  
 Source -



# HARINGEY HISTORIC STREET FURNITURE

28 B Marker - Parish Markers Alexandra Road at Arnold Bennett Way TQ311898

Date 1887 and c.1895

Description Small square cast iron Wood Green Parish marker to east of taller round-headed, cast iron marker for Hornsey Parish boundary. Both carrying names of Overseers, Hornsey with additional Churchwarden and Vestry Clerk

Inscription "WOOD GREEN PARISH etc." and "1887 HORNSEY PARISH No.19..etc."

Setting Wood Green marker partially buried, obscuring lower inscription.

Source -



29 Well - St Loy's Well Near High Road Tottenham, NW of cross and close to railway line. Awaits Rediscovery

Date "Neglected" in 1876.

Description Mentioned by William Bedwell, vicar of Tottenham from 1607-1632.

Inscription -

Setting Location unknown. "Situated close to the chapel of St Loy."

Source [www.british-history.ac.uk](http://www.british-history.ac.uk)

30 Well - St Dunstan's Well Tottenham Awaits Rediscovery

Date 1866?

Description Mentioned by William Bedwell. Reconstructed and supplied with pump after 1866.

Inscription -

Setting Unknown.

Source Ibid.

31 Well - Muswell Hornsey Awaits Rediscovery

Date 17th Century

Description Mentioned by William Bedwell.

Inscription -

Setting Unknown

Source Ibid.

# HARINGEY HISTORIC STREET FURNITURE

32 Well Grade II Old wheeled well-house Tottenham High Road TQ337894  
CA and well. at junction with Philip Lane

Date Medieval onwards

Description Ancient well with C18/19 wheel to draw up the water, housed in brick and stone parapet with timber framed shelter and open iron grilled panels. C20 railings to perimeter.

Inscription -

Setting Sited in widening pavement outside Holy Trinity church, set back from busy road.

Source Haringey GIS



33 Boundary - Brick boundary wall Vincent Road, part of boundary TQ313903  
to No.73 Moselle Avenue

Date -

Description 2m section of red brick walling, incorporating small blind arcade of 5 bays, with good rubbed arches and yellow brick infill, between two piers. Concrete cappings. Original date and function unknown.

Inscription None.

Setting Non-descript setting at edge of pavement.

Source -



# HARINGEY HISTORIC STREET FURNITURE

34 Boundary - Lordship Recreation Ground Entrance Gates Lordship Lane, opposite Waltheof Avenue TQ325905

Date Mid C20

Description Ceremonial gates to Recreation Ground from contemporary housing estate to north. Central semi-circular headed iron gates with side panels between tall brown stock brick and Portland stone pillars, with outer pedestrian gates flanked by further brick and stone pillars. In neo-classical style, the central pillars with generous cappings supporting garlanded urns.

Inscription None.

Setting Somewhat over-grand set piece, giving onto rather low-key park layout, but good views to south.

Source



35 Boundary - Cemetery Gates and pillars Church Lane, N17 TQ333908

Date Late C19th

Description Wrought and cast iron gates set between stone pillars, framing entrance to Tottenham Cemetery. Pillars of Reigate and Portland stone with Ragstone rubble body under large gabled cappings. Cusped panels with oak leaves backing shields of arms. Pair of large wrought iron gates with some cast decorations.

Inscription None.

Setting Semi rural setting with view through to cemetery.

Source -



# HARINGEY HISTORIC STREET FURNITURE

36 Boundary - Red brick boundary wall Bounding railway sidings at West side of Wood Green Common, N22 TQ304902

Date C19th

Description 54 bays of gently curving, red brick boundary wall with tall plinth, and corbelled head, set between piers all with red terracotta cappings. Central entrance gate filled in. Brickwork variable from hard to soft, with gritty original mortar.

Inscription None.

Setting Public side facing Wood Green Common giving high visibility. Forms secure compound for storage company.

Source Hornsey Historical Society/Greater London Industrial Archaeological Society (GLIAS).



37 Signage - Cast iron Finger Post Tile Kiln Lane N6 at junction with Winchester Road TQ289874

Date C19th

Description Cast iron post with decorative base and capping comprising gothic capital and finial adapted as finger post; one plate present carrying hand-painted signage. LBH monogram and benchmark cast in base and benchmark datum casting on rear.

Inscription HORNSEY LANE

Setting At edge of alleyway, adjacent to line of good bollards.

Source The Highgate Society



38 Signage - Cast iron Finger Post Woodside Avenue at junction with Fordington Road, N6 Highgate TQ277888

Date C19th

Description Cast iron post as above pattern; one plate present carrying hand-painted signage.

Inscription Public Footpath to FORTIS GREEN

Setting At rear of pavement.

Source The Highgate Society





# HARINGEY HISTORIC STREET FURNITURE

39 Signage - Cast iron Finger Post Brampton Park Road, N22. crossing Burghley Road, N8 TQ312898

Date C19th  
 Description Cast iron finger as above pattern; one blank plate present.  
 Inscription LBH  
 Setting Sited in pedestrian alleyway, in group with two parish boundary markers.  
 Source The Highgate Society



40 Signage - Cast iron Finger Post Hampstead Lane, outside Kenwood House TQ273875

Date C19th  
 Description Cast iron finger post as above pattern; fragment of top bracket.  
 Inscription LBH  
 Setting At pavement edge at secondary entrance to Kenwood House  
 Source JALA



41 Signage - Cast iron Finger Post Arnold Bennett Way at Alexandra Road, N8. TQ311898

Date C19th  
 Description Cast iron finger post as above pattern; no fingers present.  
 Inscription LBH  
 Setting Sited at end of pedestrian alley, adjacent to two parish boundary markers.  
 Source The Highgate Society



# HARINGEY HISTORIC STREET FURNITURE

42 Signage - Cast iron Way Markers Crouch End Clock Tower TQ301884

Date C20th  
 Description Early cast iron highways direction signage with border around A103, fitted to masonry with iron pegs.  
 Inscription A103 FINSBURY PK. 1¼  
 ? LONDON  
 Setting Set onto north and south faces of Clock tower  
 Source JALA



43 Signage - Road Signage Coleraine Road, Waldegrave Road, Vernon Road, Lyttleton Road, Courcy Road, Burghley Road, etc, N8 TQ312896 to TQ313897

Date 1895-1900  
 Description Cast iron pattern road sign, common to estate, and with matching decorative details to Wood Green Parish markers of 1895.  
 Inscription Various.  
 Setting Mounted on building elevations at first floor level, some within private front gardens.  
 Source JALA



44 Signage - Enamelled Road sign Lordship Lane junction with Walthef Avenue TQ325905

Date C20th  
 Description Blue enamelled pattern street sign.  
 Inscription LORDSHIP LANE N.17  
 Setting Set above shopfront on 1930's building  
 Source JALA



# HARINGEY HISTORIC STREET FURNITURE

45 Signage - Enamelled Road sign Manor Road, junction of Whittington Road, N22 TQ304915

Date Early C20  
 Description Blue enamelled pattern street sign.  
 Inscription MANOR ROAD  
 Setting On rear line of pavement  
 Source JALA



46 Signage - Enamelled Road sign Myddleton Road at junction with Palmerston Road, N22 TQ306913

Date Early C20  
 Description Blue enamelled pattern street sign.  
 Inscription MYDDLETON ROAD  
 Setting On rear line of pavement  
 Source JALA



47 Signage - Enamelled Road sign Palmerston Road at junction with Myddleton Road, N22 TQ306913

Date Early C20  
 Description Blue enamelled pattern street sign.  
 Inscription PALMERSTON ROAD  
 Setting On face of building within front garden.  
 Source JALA



48 Signage - Enamelled Road Sign Shropshire Road at junction with Myddleton Road, N22 TQ307913

Date Early C20  
 Description Blue enamelled pattern street sign.  
 Inscription WOODVILLE ROAD  
 Setting On rear line of pavement  
 Source JALA



# HARINGEY HISTORIC STREET FURNITURE

49 Signage - Enamelled Road sign Cheshire Road at junction with Myddleton Road, N22 TQ307914

Date Early C20  
 Description Blue enamelled pattern street sign, new street name and 'formerly' set over.  
 Inscription S. MICHAELS ROAD  
 Setting On rear line of pavement  
 Source JALA



50 Lighting Grade II Lamp Standard Hornsey High Street TQ30598934

Date 1870  
 Description Cast iron lamp standard. Moulded base with fluted band. Circular shaft with several collars and chevron ornamented cap, supporting pair of swan-necked gas arms with decorative iron strap work and double ladder bars. Cast-in groove up rear of standard to support gas pipe. Later access plate formed in base to convert to electricity. Painted finish pale green over dark green over black(?).  
 Inscription A WILLIAMS & CO SOUTHWARK  
 Setting Curious grouping with drinking fountain and cattle trough at edge of ancient waste ground opposite church.  
 Source Listed monuments (DCMS)



51 Lighting - Lamp Standard and Gas fitting North Road N6 close to junction with Hampstead Lane TQ283318

Date c.1900  
 Description Standard as pattern elsewhere, but still with 4 brackets carrying lantern; brass framed with tapered square enclosure and round cap vent. 1 ladder arm. Recent cast sign attached to post. Lettering in base casting.  
 Inscription REGISTERED No. ??7031 (?) 1900 (?)  
 Setting On broad, tree-lined pavement outside High School entrance.  
 Source Haringey GIS



# HARINGEY HISTORIC STREET FURNITURE

52 Lighting - Lamp Standard

Hampstead Lane at junction  
with Courtenay Avenue, N6

TQ270876

Date Late 19thC or early C20  
Description Cast iron lamp standard with heavily decorated base. Later head fitting.  
Inscription None.  
Setting On pavement at junction with private road.  
Source JALA



53 Boundary - Bollards

Tile Kiln Lane N6 at  
junction with Winchester Road

TQ289874

Date 1883  
Description 4 bollards at mouth to alley adjacent to finger post, with two further beyond. Cast iron, tapered square form, with chamfered edges giving pronounced octagonal spike. LBH cipher to front of base, with makers name in roundel with date to rear.  
Inscription LBH and 1883  
Setting Grouped with fingerpost.  
Source JALA



# HARINGEY HISTORIC STREET FURNITURE

54 Boundary - Bollards

Church Path, N8  
at junction with Tottenham Lane

TQ305889

Date 1886

Description 3 bollards of tapered square form as above. Clean and legible casting at base. Tops nicely worn.

Inscription LBH  
THORNCLIFFE SHEFFIELD 1886

Setting Good setting, across alley to side of Hope & Anchor PH.

Source Hornsey Historical Society



55 Boundary - Bollards

At entrance to  
Hornsey churchyard Memorial Gardens,  
Hornsey High Street

TQ306893

Date 1886

Description Further bollards of similar pattern. 4No. interesting lamp standards within churchyard, adapted to accept floodlighting, and one other to west of tower.

Inscription LBH  
THORNCLIFFE SHEFFIELD 1886

Setting Good setting across path at entrance to churchyard.

Source JALA



# HARINGEY HISTORIC STREET FURNITURE

56 Misc. Grade II Electricity Supply Feeder Leinster Road at junction with Linden Road, N10 TQ288892

Date 1900

Description Cast iron electricity supply feeder pillar, of square form approx 1200mm high, capping with decorative finial. Orthogonal decorative castings to door faces, with florid panels to side carrying inscription. A relic from the first stages of electricity.

Inscription HARDY & PADMORE LTD. MAKERS WORCESTER

Setting On residential pavement at junction.

Source Listed monuments (DCMS)



57 Misc. Grade II K6 Telephone Kiosk Hampstead Lane, outside Kenwood House TQ273875

Date 1936 - 1980

Description Telephone kiosk developed from famous K2 pattern by Sir Giles Gilbert Scott and introduced from 1936 as Jubilee kiosk (coronation of George V). Cast iron. Square kiosk with domed roof. Interior refitted.

Inscription -

Setting Sited against boundary wall of Kenwood House, adjacent to secondary entrance.

Source Listed monuments



# HARINGEY HISTORIC STREET FURNITURE

58 Misc. Grade II K6 Telephone Kiosk North Hill N6, at junction with Hillcrest. TQ282879

Date 1936 - 1980  
 Description As above. Rear visible carrying makers panel. Interior refitted.  
 Inscription W MACFARLANE & CO LTD  
 SARAGEN FOUNDRY GLASGOW  
 Setting On tapered concrete base, close to Highpoint.  
 Source Listed monuments



59 Misc. K6 Telephone Kiosk High Road Tottenham, TQ336892

Date 1936 - 1980  
 Description As above. Interior refitted.  
 Inscription T.O.T.E.N.H.A.M  
 Setting On pavement close to CONEL main entrance  
 Source JALA



60 Misc. K6 Telephone Kiosk Town Hall Approach TQ336894

Date 1936 - 1980  
 Description As above. Interior refitted.  
 Inscription -  
 Setting On pavement to side of Tottenham County School building.  
 Source JALA





# HARINGEY HISTORIC STREET FURNITURE

61 Misc. Grade II Toilet & Railings Bruce Grove, east of railway bridge, close to junction with High Road N17 TQ337901

Date early C20

Description Ladies and disabled toilets housed in gable-ended, clay-tiled, mock timber-framed 'lodge' structure on glazed brick base. Base extending to basement with curved flight of external steps serving gentlemen's toilets. Frontage, paths and steps linked by painted wrought iron railings. Nice roof vent cupola detail. Several fading signs referring to recent history of council funding politics.

Inscription Various attached signs.

Setting Important site between parade of shops and railway, close to High Road retail centre.

Source Listed monuments



62 Misc. - 2 manhole covers Nr Haringey station Location not identified

Date 1867-1905

Description 1867-94 (Hornsey Local Board) & 1905 (Borough of Hornsey) cast iron man hole covers

Inscription -

Setting Unknown

Source *Ibid.*

# HARINGEY HISTORIC STREET FURNITURE

63 Misc. - Manhole cover Crouch Hill Location not identified

Date 1890s  
 Description Cast iron manhole access cover and frame. Islington's electric undertaking happened between 1892 and 1948.  
 Inscription "Vestry of St Mary, Islington, Electric Light".  
 Setting Unknown.  
 Source *Ibid.*

64 Misc. - WWII Warden's post Wood Green Common, opposite Western Road TQ306902

Date c.1939  
 Description Fletton brick bunker with concrete capping, and attached lobby with later concrete lid. Small windows blocked.  
 Inscription None.  
 Setting Inconspicuously located at rear of Common built into perimeter railings.  
 Source -



65 Misc. - WWII Warden's post Junction of Palace Gate Road and Alexandra Park Road TQ298904

Date c.1939  
 Description Fletton brick bunker with concrete capping, and attached lobby with later concrete lid. Small windows partially blocked.  
 Inscription None.  
 Setting Occupying acute corner of residential junction.  
 Source -



# HARINGEY HISTORIC STREET FURNITURE

66 Misc. - Tank blocks On railway embankment to side of Bedford Road N22 TQ302905

Date c.1939  
 Description Six blocks stepping down embankment (to prevent outflanking of railway defences?) Approx 1050x840x1050 high, constructed of 3" clinker blockwork, filled with concrete.  
 Inscription None.  
 Setting Set within undergrowth of railway embankment  
 Source -



67 Bollards. - Bollards/gun posts Michael's Terrace Location not identified

Date c.1939  
 Description Awaits identification  
 Inscription -  
 Setting -  
 Source -

68 Misc. - Sculpture High Road, Tottenham, south of junction with Somerset Road TQ338896

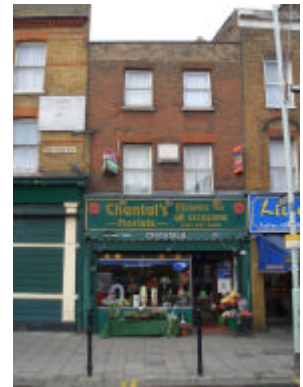
Date c.1983  
 Description Portland stone sculpture of vaguely human form(s) set on blue engineering brick base, with mortared joint.  
 Inscription "EMERGING FORM" BY VANESSA POMEROY (PURCHASED 1983)  
 Setting Poorly located in landscaped area close to public convenience.  
 Source -



# HARINGEY HISTORIC STREET FURNITURE

69 Misc. - Stone tablet On front elevation 797 High Road Tottenham TQ338914

Date 1829  
 Description Stone tablet supported on bracketed stone bearer, inscribed MARKET PLACE 1829. On 1st floor level of building with fine brickwork frontage and uPVC windows.  
 Inscription MARKET PLACE 1829  
 Setting Attached to privately owned property.  
 Source -



70 Postal - Pillar Box Park Road at junction with Shanklin Road, N8 TQ299885

Date 1887-1902  
 Description B pattern, free-standing cylinder type of cast iron, with high aperture and toothed cap, carrying VR cipher  
 Inscription VR  
 A HANDYSI??E Co Ld? DERBY & LONDON  
 Setting At edge of pavement.  
 Source JALA



71 Postal - Pillar Box Muswell Road, N10 at junction with Elms Avenue TQ288899

Date 1887-1902  
 Description B pattern, free-standing cylinder type post box of cast iron, as above  
 Inscription VR  
 A HANDYSI??E Co Ld? DERBY & LONDON  
 Setting At edge of pavement.  
 Source JALA



# HARINGEY HISTORIC STREET FURNITURE

72 Postal - Pillar Box Outside Nos.136/139 High Road, Tottenham TQ336884

Date pre 1952  
 Description Single pillar box with GR cipher and crown on front. Fitted with side-mounted stamp dispenser.  
 Inscription α GR  
 POST OFFICE  
 Setting At edge of pavement.  
 Source JALA



73 Postal - Pillar Box Hampstead Lane at junction with Courtenay Avenue, N6 TQ270876

Date from 1978  
 Description Plain cast iron cylinder of clean contemporary design known as Type K.  
 Inscription EIIR  
 Setting At edge of pavement.  
 Source JALA



74 Misc. - Paving Unit Junction of Elmfield Avenue and Tottenham Lane TQ303887

Date C20th  
 Description Coarse aggregate concrete paving unit with ABERDEEN ADAMANT in brass lettering  
 Inscription ABERDEEN ADAMANT  
 Setting Part of pavement area with several similar but plain units.  
 Source JALA



# HARINGEY HISTORIC STREET FURNITURE

75 Misc. Grade II New River Tunnel North Entrance On private land to north of Myddleton Road TQ30549142

Date Mid C19th  
 Description North entrance arch to tunnel of stock brick with raised parapet and curved abutments ending in square piers. Stone copings. Crude bridge crossing against arch offering platform for vandalism.  
 Inscription None.  
 Setting Setting disfigured by TW security railings and bridge against face of arch.  
 Source DCMS



76 Misc. New River Tunnel South Entrance Park Avenue, close to junction with Station Road TQ304904

Date Mid C19th  
 Description South entrance arch to tunnel of stock brick with parapet and curved abutments ending in square piers. Stone copings.  
 Inscription None.  
 Setting Lovely setting; aqueduct flanked by good run of railings to west side  
 Source JALA



77 Misc. - Column Vents Cross Monument Muswell Hill close to Rookfield Avenue, N10 TQ291894

Date Late 19thC or early C20  
 Description Pair of cast iron vent columns with decorative bases and caps. Function unknown.  
 Inscription None.  
 Setting At edge of road.  
 Source JALA



Jonathan A Law & Associates  
 Studio 20  
 436 Essex Road  
 London N1 3QP

March 2006