

Preparation for Adulthood (PFA) Action Plan

BI-ANNUAL REPORT SEPTEMBER 2023



Haringey
LONDON



Mary Jarrett
Head of SEND



Andrea Kelly
Head Of Learning Disability
Partnership

Message from our PFA leads

Preparation for Adulthood (PfA) is the Haringey partnership's commitment to improving support for young people as they transition into adulthood. PfA emphasises strong partnership between children's and adult health and social care services.

The operational relaunch of PfA in November 2022 brought renewed focus to address challenges faced by families. It was agreed that a robust framework was needed for information sharing among stakeholders and families.

Together, we established four key focus areas. Senior reporting officers were assigned to drive outcomes and provide monthly progress reports. Local arrangements were strategically mapped to identify successful services and areas requiring improvement.

PfA encompasses young people with mental health problems, autism, disabilities, and complex needs, including those in secure settings or under the care of local authorities. Our Plan aims to deliver high-quality care and identify priority areas for improvement in Haringey. We are committed to exploring innovative approaches in our delivery.

Haringey is dedicated to achieving its two-year Preparation for Adulthood (PFA) outcomes. We are committed to monitoring progress and reaching milestones through bi-annual PFA reports. Together, we will work towards ensuring the successful transition and support for young people as they embark on their journey into adulthood.

Meet the Pathway Leads

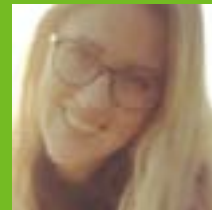
Meet our senior leaders and project manager who are delivering on the Preparation For Adulthood outcomes



KAREL STEVENS-LEE
Good Health



MARY JARRETT
Education, Employment
and Benefits



MADDIE WATKINS
Independent Living and
Housing



SIMONE COMMON
Friends, Relationships,
Community

Preparation for Adulthood Pathways



HEALTH

Managing health needs through their move into adulthood focussing on wellbeing and access to services.



EDUCATION, EMPLOYMENT AND BENEFITS

Focus on employment or an apprenticeship model and provide practical advice and guidance to support young people entering the world of work, paid or volunteering opportunities.



INDEPENDENT LIVING AND HOUSING

Transparency in relation to what housing options is available in Haringey, where we need to address gaps in provision with commissioning colleagues.



FRIENDSHIPS, RELATIONSHIPS AND THE COMMUNITY

Establishing and maintain friend networks within their community whilst exploring activities available and accessible in neighbourhoods and Borough wide.

Priority 1: Good Health

The NHS Intergrated Care Board and the Council wants everyone in Haringey to have access to good and timely health provision. We know there are a vast range of need and health needs and as such a personalised pathway is essential to meeting needs. We have listened to the experiences of young people and families transitioning from children to adult services and the importance of having good transition.

Outcomes

- 1.1. Improve the transition between Children's and Adults' NHS services
- 1.2. Joined-up service information to be provided for young people, adults and parent carers
- 1.3. Improve the understanding of health services available for people in adulthood compared to those in childhood, made easily accessible on the Local Offer website
- 1.4. A well-trained workforce who are clear about transitions and pathways
- 1.5. Feedback, complaints and coproduction are used and evidenced to inform improvements in practice

You said:

We want an improved transition between Children's and Adults NHS services.

We did:

We have implemented an All-age NHS Continuing Care approach inclusive of transitions to enable a smoother transition for a young person entering adulthood with complex care. We have developed a new 18-25 Transitions team launched April 2023 to address the historical gap that young people in Haringey tend to fall through due to not meeting specific criteria for NHS services.

You said:

We want a joined-up service information to be provided for young people, adults and carers.

We did:

We have significantly improved the rates of annual health checks with GPs for people aged 14-25 with a learning disability. April to July 2023 out of 511 registered a total of 133 health checks have been completed.

You said:

We want an improve the understanding of health services available for people in adulthood compared to those in childhood, made easily accessible on the Local Offer website.

We did:

We have started to make improvements in the accessibility and accuracy of health information on the Local Offer website.

You said:

We want a well-trained workforce who are clear about transitions pathway

We did:

We have started to work with and train practitioner on the statutory requirements to supporting children and young people aged 0-25.

You said:

We want feedback, complaints and co-production are used as evidenced to inform improvements in practice.

We did:

We have increased the capacity of the Designated Clinical Officer to support NHS health providers.

What's next and planned activities

1. Continue to work with GPs to increase the number of 14–25-year-old having an annual health check and start work on GPs developing health action plans for young people to follow and facilitate information sessions to better inform young people and families on what to expect from an annual health check.
2. Further work with young people and families with lived experience, co-design how to gain feedback on services and make improvements.
3. Ensure we have information on the Local Offer that is up to date and accessible.



Challenges we face and how we are overcoming them

Challenge 1

The number of referrals and complexity of need is increasing which is impacting on the waiting times for services.

What we are doing about it:

Ensuring providers have a system in place to ensure those with the greatest need are prioritised.

Challenge 2

The NHS has faced workforce challenges across all disciplines.

What we are doing about it:

Conducting feasibility studies and looking at reconfiguring the use of existing sites for this cohort.



Priority 2: Education, Employment and Benefits

The Council and its education and health partners want all young people with SEND in Haringey, whatever their circumstances, to have high quality plans which support them to achieve success in adult life. Where possible young people should be prepared for employment with access to specialist training and support, including Supported Internship schemes.



Outcomes

- 2.1. Ensure all supporting documentation is of good quality and included in the EHCP and subsequent Annual Review process.
- 2.2. Ensure preparation for adulthood is considered at earlier through a child's individual planning process.
- 2.3. Mapping post-16 sufficiency for education and supported internships
- 2.4. Developing careers advice standards for all schools and colleges in Haringey
- 2.5. Good use of the Local Offer to support choices in education for young people aged 16+
- 2.6. Increase supported internships and apprenticeships for young people with SEND.



You said:

You want the Local Offer website to be informative and useful in relation to preparation for adulthood.

We did:

The Local Offer website is under continuous review and now has a designated section on Preparation for Adulthood: www.haringey.gov.uk/preparing-adulthood

You said:

We want good quality education, health and care plans and Annual reviews.

We did:

We developed a quality assurance tool for EHCPs and Annual Reviews, resulting in improved quality and consistency.

You said:

You want preparation for Adulthood to be considered earlier through a child's individual planning process.

We did:

We initiated an Annual Review recovery plan, with 69% of children and young people having an Annual review this year. We are aiming for 100% by September.

You said:

You want the Council to map and understand the post-16 offer in Haringey, including Supported Internships.

We did:

We started mapping the post-16 offer in Haringey and will publish the findings on the Local Offer by September 2023.

You said:

You want all young people in Haringey to have access to good quality careers advice.

We did:

We established links with the London Career's hub to ensure good quality careers advice for Haringey Schools to help them to meet the Gatsby benchmarks (careers advice standards).

You said:

You want more supported internships for Haringey young people.

We did:

Haringey will launch its own Supported Internship Programme in September 2023 with 65 new internships over the next 5 years.

What's next and planned activities

1. Continued work on The Local Offer website to make information accessible.
2. Increased investment in the Statutory Assessment Team (to continue improvements in the quality and timeliness of education, health and care plans and annual reviews) Co-design workshops with Young People and families.
3. Launch the Haringey Council Supported Internship Scheme.
4. Map existing provision and develop new employment schemes.



Challenges we face and how we are overcoming them

Challenge 1

There is a backlog of Annual reviews and the quality of Annual reviews in preparing young people for adulthood is still improving.

What we are doing about it:

We are investing in additional staff in the Statutory Assessment Team to increase capacity and deliver high-quality plans for young people in Haringey.



Priority 3: Independent Living and Housing Actions

The Haringey partnership wants everyone in Haringey, whatever their circumstances, to have a safe, stable, and genuinely affordable home. Housing-Related Support (HRS) (previously Supporting People) helps Haringey's most vulnerable single adult residents build independent lives, in appropriate and safe housing, with the support from all services available to help them achieve their goals and vision of a good life.

Outcomes

- 3.1. Mapping the needs, gaps and existing service provision across the borough to understand the need for new or reconfigured supported and specialist housing and housing-related services. Development and delivery of evidence-led housing support and accommodation services and relevant market shaping
- 3.2. Work alongside families with lived experience, who represent different cohorts of the SEND population, to map and understand what's important to them in their local communities
- 3.3. Contribute to the work defining and developing our co-production commitment and ensure there is a common understanding of this when working with young people and their families
- 3.4. Ensure support is available for vulnerable people to develop independent living skills in a safe environment
- 3.5. Ensure the needs of SEND young people and their families are a key part of the Council's Housing Delivery Programme, including the Bespoke Homes and Supported and Specialist Homes Programmes



You said:

We want a 'Local Offer' on the Independent Living and Housing pathways available in Haringey, eligibility criteria and support on offer.

We did:

We have co-produced a local offer document describing the housing and housing support services available for SEND young people in Haringey commissioned by Housing Related Support.

You said:

You want us to work alongside families with lived experience, who represent different cohorts of the SEND population, to map and understand what's important to them in their local communities.

We did:

We are mapping housing-related provision for SEND young people and potential accessible provision.

You said:

To ensure support is available for vulnerable people to develop independent living skills in a safe environment.

We did:

Began a review of current service provision, including floating support services, independent living skills apps and money house provision.

You said:

Include SEND needs in the Council's Housing Delivery Programme, including the Bespoke Homes and Supported and Specialist Homes Programmes.

We did:

Bespoke Housing Programme is in place and ongoing. We have also contributed and fed back into the Housing Strategy consultation the importance of including and prioritising SEND Supported & Specialist Housing Delivery Programme in future development. We are planning a series of co-design sessions with families and YP to identify gaps in service provision and design new services that meet those needs.



What's next and planned activities

1. Complete young people, carers (with lived experience) and stakeholder surveys
2. Co-design workshops with Young People and families who represent different cohorts of the SEND population,
3. Forward online consultation link to Council services for dissemination
4. Disseminate through the Council's Citizen's Panel



Challenges we face and how we are overcoming them

Challenge 1

The outcomes of this priority will move at a slower pace due to funding limitations for new housing and independent living services.

What we are doing about it:

Exploring options to reconfigure existing provision within budget limits and seeking external funding for pilot projects, while considering the increasing costs of delivering current services.

Challenge 2

There is a challenge in acquiring suitable homes for young people and carers, such as two-bedroom accessible accommodation for young people and carers.

What we are doing about it:

Conducting feasibility studies and looking at re-configuring the use of existing sites for this cohort.



Priority 4: Friends, Relationships, Community Actions

Haringey wants to enhance communication for young individuals and their families who have special educational needs and disabilities (SEND). This involves establishing appropriate services and support systems to enable young people to actively participate and remain engaged with services within and outside of their local borough. An inclusive environment will be created, encouraging young people with SEND to communicate effectively, both expressing themselves and actively listening. Additionally, efforts will be made to ensure that all young people with SEND have the chance to enjoy a social life, fostering social connections that will continue into adulthood.

Outcomes

- 4.1. Ensure that the Local Offer and other public sector service directories and websites are updated (and kept up to date) with all key contact details and information about forums is provided
- 4.2. Understand the needs of different audiences and how they would prefer to obtain information, whether it be via a leaflet, online forums, face to face networking and support groups etc
- 4.3. Understand the issues being faced by disabled young people that want to be more active and how they can be active alongside able-bodied young people
- 4.4. Promotion of inclusive activities that are already available across the borough
- 4.5. Ensure that the borough's Youth Hubs are promoted and have an inclusive offer, by identifying any current gaps and ensuring additional events/services are made available at these spaces for young people with SEND.
- 4.6. Create new forums within and beyond social care and additional opportunities for connecting and giving (peer support and networks)
- 4.7. Through the Annual Review process, ensure young people are supported to influence control and choice to promote their social connections, independence, self-esteem and mental health



You said:

To improve communication for young people and their families with SEND

We did:

We have recently developed a SEN youth forum, where young people are supported to have their voice heard on a range of issues. The group has 4 regular members and is working with schools to increase recruitment. To date, there have been 3 sessions of the forum.

You said:

To ensure that there are services and support in place so that young people with SEND are able to become and stay active

We did:

Updated the Local Offer and linked to where other public sector service directories and websites with leisure and other activities that young people with SEND can access.

The Elevated Youth sampled subtitled films. Two Elevated Youth panelist tested Rising Green Job fair. Two stands specifically targeted SEND youth. The findings can be found on the Elevated Youth website.

You said:

To Provide and promote an inclusive offer that allows young people with SEND to feel able to talk and to listen; to be there and to feel connected

We did:

Worked with leisure services to ensure that the current review of the leisure offer is inclusive of young people with SEND. This has included ensuring young people had the opportunity to speak to Councillors about the review of leisure services.

We did:

We have developed a youth club provision at Rising Green Youth Hub on a Thursday for young people with SEND. Young people are also supported to access the wider youth offer at the centre and the holiday provision which is accessible.



What's next and planned activities

1. Exploring an internship for a young person as part of the youth engagement team
2. Develop a single access point on the local offer page to enable easier navigation to pages relating to friends, relationships and communities
3. Further promote the Youth Hubs to ensure improved accessibility
4. Complete the leisure review and report on outcome for young people with SEND

Challenges we face and how we are overcoming them

Challenge

We will continue to ensure that the forum is representative of a wider range of young people

What we are doing about it:

We will do this by having an ongoing recruitment campaign and working with schools, colleges and our planned intern to increase the number of young people engaging in the forum.





Vicky Murphy
Service Director Adult
Social Services



Jackie Difolco
Assistant Director for Early
Help & Prevention Early Help

Children and Adult Directors Closing Remarks

The executive strategic oversight from Adults and children's services directors, in partnership with NHS and education system leaders, illustrates the Councils commitment to ensuring that PFA remains at the heart of the councils' values Caring, Collaborative, Community-focused, Courageous and Creative.

The PfA strategy promotes a collaborative approach to work collaboratively other council department. In addition, collaboratively across our statutory services, local partners and with residents. This includes how we design and deliver services, understanding the emerging with health colleagues to gain a greater insight and understanding of the emerging requirements for young people in Haringey.

We are delighted with the progress being made to improve our services to support young

people with SEND to prepare for adulthood. We recognise that cultural and systemic change takes time but also that we must increase the pace of progress to address issues that have been long standing and ensure our young people and and young adults receive timely, appropriate and good quality support.

The involvement of young people, parents and carer is fundamental to ensuring the success of this process. Our pledge is together we aim to create a streamlined next steps process to support the navigation to appropriate services required as adults. The annual report embodies the enthusiasm and drive to continue this journey.