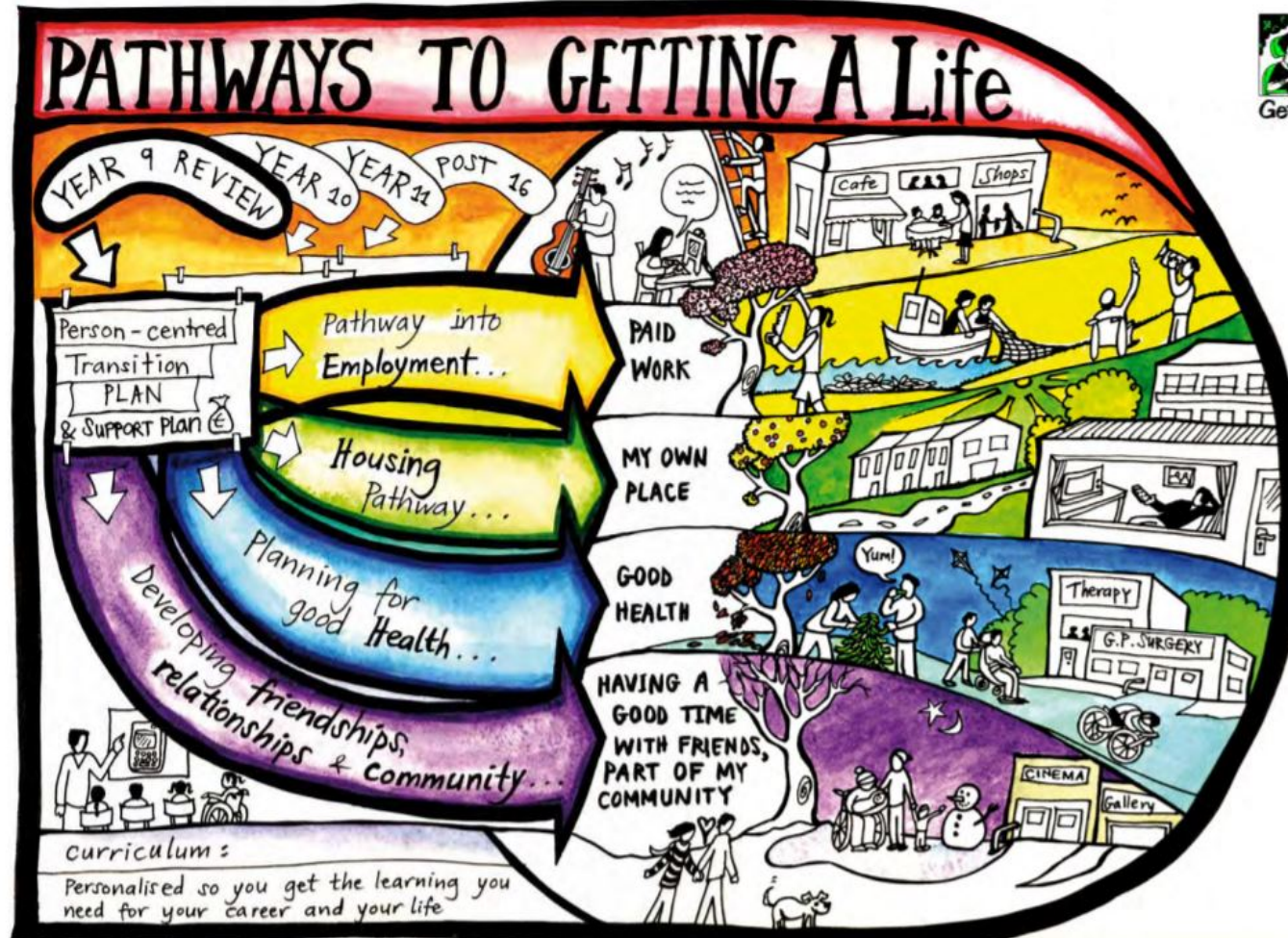


Preparing for Adulthood

Vikki Monk Meyer Head of Service SEND

January 2019



Purpose of Today's Event

Leaving school and moving in to adulthood is a challenging time for young people and their parents as they consider what kind of real choices exist, and how these choices will help the young person lead a fulfilling adult life.

- ▶ This session aims to;
- ▶ Introduce family carers and young people to Haringey's Education, Health and Social Care offer for young people with SEND
- ▶ Explain Haringey's systems supporting Transition and introduce the Local Offer
- ▶ Explain the transition to college and what to consider when choosing college places
- ▶ Introduce family carers to Adult Services

Key Themes

Education

- ▶ Education - choosing colleges and what to consider
- ▶ Applying for college
- ▶ Employment and Training
- ▶ Travel training
- ▶ Local Offer

Adult social care

- ▶ Care Act 2014
- ▶ Eligibility criteria
- ▶ Referrals to adult social care
- ▶ Mental Capacity Act
- ▶ Direct Payments
- ▶ Services available to meet outcomes
- ▶ Information and advice on care and support

SEND Reforms

- ▶ Children and Families Act 2014 reformed the way support is given to children and young people with special educational needs in England.
- ▶ The National Network of Parent Carer Forum has created factsheets to help families understand these the changes in England:

<http://www.nnpcof.org.uk/useful-information/send-reform-factsheets/>

Education – Choosing the right course – Aspirations and Independence

- ▶ Local provision map of colleges available on the Haringey Local Offer website. Mainstream and Specialist Colleges Young People in Haringey attend aged 16+ years
- ▶ Local 6th Forms (will have entry requirements)
- ▶ Haringey 6 Form College - Specialist, cross centre and mainstream places
- ▶ Riverside Specialist Learning Centre
- ▶ New - The Grove schools for young people with Autism
- ▶ College of North East London
- ▶ ADA digital College
- ▶ Area 51 Specialist College
- ▶ Harrington's Scheme
- ▶ Vocational e.g. Capel Manor
- ▶ We also support young people attending colleges in other boroughs e.g. New City College Hackney
- ▶ Be mindful of distance/hours and number of days courses run
- ▶ Volunteering/apprenticeships/ internships/ university
- ▶ What about after education? Who can help with access to work

Applying for Colleges

Visit Colleges -
let the colleges
know your SEND
needs

Tell the SEND
team which
colleges you
have applied to
sen@haringey.gov.uk

College lets
SEND team
and families
know that a
place has been
offered

College and
SEND agree on
costs of
support based
on your EHCP

Your EHCP and
progress is
annually
reviewed and
future plans
discussed

Graduation!

Apprenticeships, Internships and Employment Support

Apprenticeship - paid training provider linked to an employer

Internship - unpaid on the job training and work experience

Job coaching and job carving - an organisation helps the employer create a job to suit the applicant

Key Organisations in Haringey:

- ▶ My AFK (formerly Action for Kids): Ability House, 15A Tottenham Lane, Hornsey N8 9DJ - call on 020 8347 8111 or text on 07949 245 131
- ▶ Mencap: mencap.org.uk/internships mark.capper@mencap.org.uk
- ▶ Tottenham Hotspur: contact - email: foundation@tottenhamhotspur.com or tel 020 8365 5138
- ▶ Further information for young people in Haringey is available on the [Youth Space website](#).
- ▶ The [Jobcentre Plus network \(external link\)](#) can also help young people and adults of all ages find work as well as advice on what benefits are available while job search is taking. Jobcentre Plus Disability Employment Advisers can offer additional advice and guidance for people with learning difficulties or disabilities. You can contact Jobcentre Plus on 0845 604 3719 or by text/phone on 0845 608 8551.
- ▶ The National Careers Service provides face to face, online and telephone advice and guidance to support your career planning. See the [National Careers Service website \(external link\)](#) for more information and a range of online tools and support.

Learning

- ▶ Haringey Adult Learning Service (HALS) course help people them get the best out of their course, and plan what they want to do after their course. [HALS](#).

SEND Haringey Local Offer
Support & Services

HEALTH

SUPPORT

EDUCATION

MONEY

PREPARING FOR ADULTHOOD

For all the information and guidance on the support and services available for children and young people with special educational needs and disabilities (SEND), visit Haringey's Local Offer.

www.haringey.gov.uk/localoffer

Haringey
LONDON

The graphic features a central vertical axis with five circular icons: a green cross for Health, a teal hand for Support, a red graduation cap for Education, a purple pound sign for Money, and a yellow person icon for Preparing for Adulthood. Each icon is connected to a horizontal bar with the corresponding category name. The background consists of colorful, curved lines in shades of blue, purple, yellow, and orange.

- ▶ Information and advice about SEND support and services
- ▶ Health information
- ▶ Money matters
- ▶ Transport and travel
- ▶ Leisure and short breaks
- ▶ Mediation and resolving disagreements, tribunals
- ▶ SEND policies and resources
- ▶ Education, Health and Care Plan and assessment
- ▶ Special educational health and social care provision
- ▶ Post 16 options
- ▶ Education, work and training
- ▶ Preparing for adulthood

Care Act 2014

- ▶ Duty under the Care Act 2014 to carry out a Transition Assessment for a young person to help them plan for their future, if they are likely to have needs once they turn 18.
- ▶ Gives local authorities a responsibility to assess a carer's needs for support, where the carer appears to have such needs.

“Services at transition should be aimed at moving a person into work/adult life in such a way as to promote their independence and so reduce their long term needs for care and support.”

Care Act 2014

The Act says clearly that a person will be entitled to have their needs met when:

- ▶ the adult has 'eligible' needs
- ▶ the adult is 'ordinarily resident' in the local area (which means their established home is there)

AND where any of these situations apply to them:

- ▶ the type of care and support they need is provided free of charge
- ▶ the person cannot afford to pay the full cost of their care and support
- ▶ the person asks the local authority to meet their needs
- ▶ the person does not have mental capacity, and has no one else to arrange care for them

Referral to Adult Social Care

- ▶ If your child is eligible for services under the 'Care Act 2014' they may be referred to adult social care for an initial assessment. This will determine eligibility and could lead to a more detailed assessment undertaken
- ▶ Referrals to adult social care are made at age 17 by SEND Service
- ▶ Assessments by adult social care should take place before the young person turns 18 either by:
 - ▶ Adult Social Care
 - ▶ Adult Community Learning Disabilities Team
 - ▶ Adult Mental Health Services - CAMH's to Adult Mental Health Services run by Barnet Enfield and Haringey Mental Health Trust
- ▶ For Young People whose health needs cannot be met through local services, a Continuing Health Care assessment may be undertaken at age 17.5 by nurses from Haringey Clinical Commissioning Group and a representative from the LA
- ▶ Young people that do not meet Adult social care eligibility will be signposted to support in the community including employment and skills training
- ▶ People eligible for care and support may receive advice, direct services or a package of support, such as a direct payment.

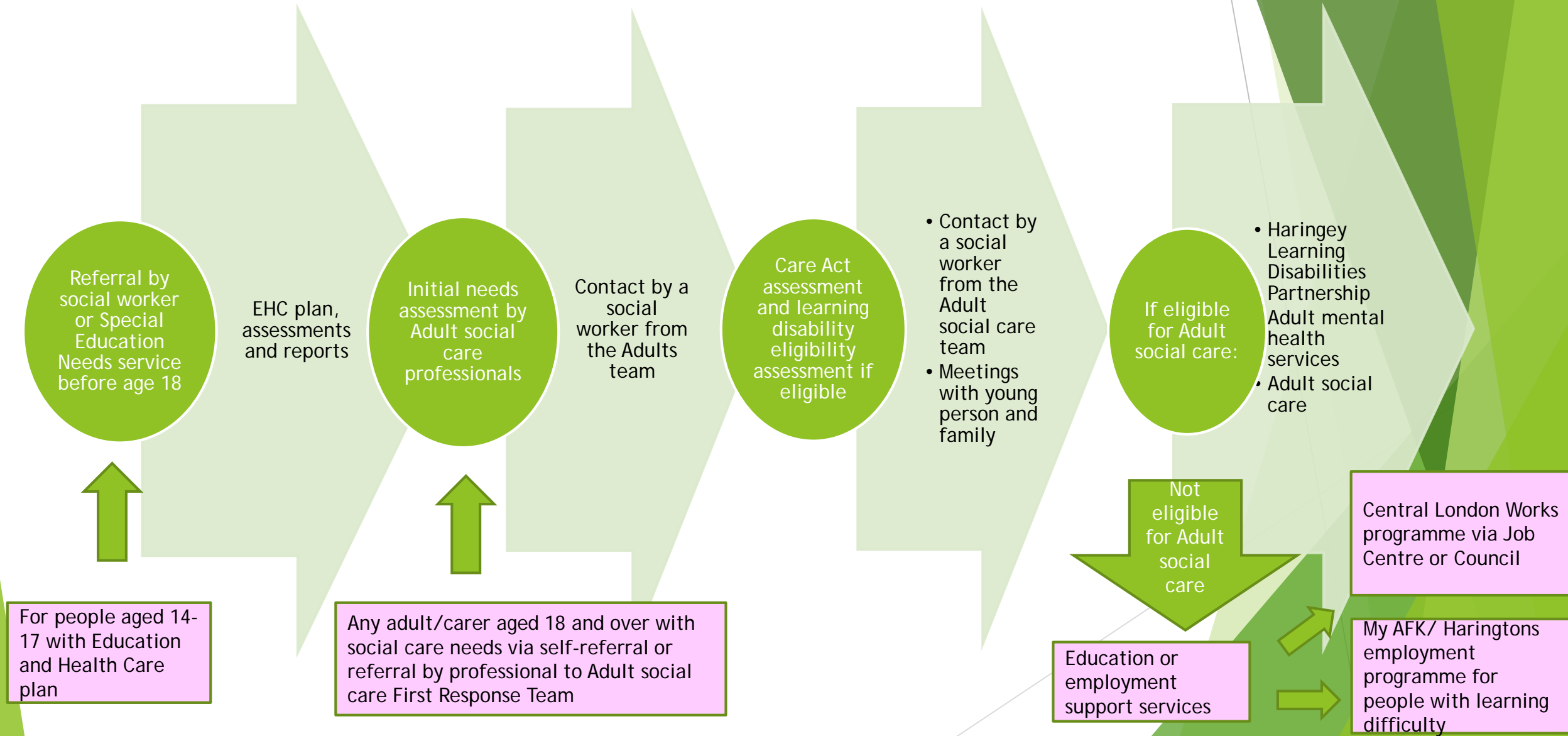
NHS Continuing Health Care

- ▶ Children and young people may receive a "continuing care package" if they have needs arising from disability, accident or illness that can't be met by existing universal or specialist services alone.
- ▶ At age 17.5 they will receive an NHS Continuing Health Care assessment (for adults) assessed by a team of healthcare professionals (a "multidisciplinary team").
- ▶ NHS continuing healthcare is for adults. To be eligible for NHS continuing healthcare, you must be assessed by a team of healthcare professionals (a "multidisciplinary team"). The team will look at all your care needs and relate them to:
 - ▶ what help you need
 - ▶ how complex your needs are
 - ▶ how intense or severe your needs can be
 - ▶ how unpredictable they are, including any risks to your health if the right care isn't provided at the right time
- ▶ Your eligibility for NHS continuing healthcare depends on your assessed needs, and not on any particular diagnosis or health condition. If your needs change then your eligibility for NHS continuing healthcare may change.
- ▶ You should be fully involved in the assessment process and kept informed, and have your views about your needs and support taken into account. Carers and family members should also be consulted where appropriate.
- ▶ A decision about eligibility should usually be made within 28 days of the assessment request.
- ▶ If you aren't eligible for NHS continuing healthcare, you can be referred to your local council who can discuss with you whether you may be eligible for support from them.

Referral to Mental Health services

- ▶ Child and Adult Mental Health Services may make a referral (of young persons known to them) to Adult Social Care services for adult mental health services before the young person reaches 18 via Adult social care: firstresponseteam@haringey.gov.uk or 020 8489 1400
- ▶ Young people will receive an initial assessment, and if they qualify for adult services, will be further assessed by mental health professionals in Barnet, Enfield and Haringey Mental Health Trust
- ▶ New referrals to mental health services may be made by your GP
- ▶ Adult social care services will work with adults to ensure access to appropriate recovery or treatment services where eligible
- ▶ Short term mental health needs may be addressed through community services such as IAPT (*Improving Access to Psychological Therapies*)

Process for Adult social care assessment



Mental Capacity Act 2005

- ▶ A person is assumed to be able to make their own decisions unless it is proven otherwise. This may be explored through a mental capacity assessment.
- ▶ The Mental Capacity Act 2005, covering England and Wales, provides a statutory framework for people who lack capacity to make decisions for themselves, or who have capacity and want to make preparations for a time when they may lack capacity in the future.
- ▶ The outcome of any assessment will set out who can take decisions, in which situations, and how they should go about this. This may be the person's parent, guardian or groups of staff such as professionals if there is no other carer who can do this for them, if a young person is not able to make some decisions for themselves.
- ▶ A person's capacity must not be judged simply on the basis of their age, appearance, condition or an aspect of their behaviour.

Mental Capacity Assessments - Best Interest Decision Making

- ▶ If the person lacks capacity then a 'best interest' decision must be made.
- ▶ The term 'best interests' is not actually defined in the Act. This is because so many different types of decisions and actions are covered by the Act, and so many different people and circumstances are affected by it.
- ▶ When working out what is in the best interests of the person who lacks capacity to make a decision or act for themselves, decision-makers must take into account all relevant factors that it would be reasonable to consider for the young person, not just those that they think are important.
- ▶ They must not act or make a decision based on what they would want to do if they were the person who lacked capacity.

Housing options - What happens if a Young Person does not want to live at home?

There are a range of services to support young people who do not want to live at home, depending on their needs:

- ▶ Supported Living (such as Key ring) - residents have own tenancy with person centred support to address their needs and aspirations
- ▶ Residential or Nursing Care - Placement away from home
- ▶ Housing Related Support - (supporting people to live in their own homes)
- ▶ Own Home with support - home care, adaptations or community alarm system
- ▶ Positive Behaviour Services - short term intervention to decrease challenging behaviour and increase quality of life

More information is at: <https://www.haringey.gov.uk/social-care-and-health/help-housing>

Direct payments

- ▶ Direct payments are money paid to pay for services to support people with care and support needs and Carers eligible for support in their caring roles.
- ▶ This gives people more choice and control over how they receive care and support, by whom and when.
- ▶ To become eligible social care services will carry out an assessment of needs.
- ▶ The amount you may receive depends on your needs.
- ▶ Visit: <https://www.haringey.gov.uk/social-care-and-health/accessing-services/paying-care/personal-budgets-and-direct-payments/direct-payments#whatpay>

How to find services

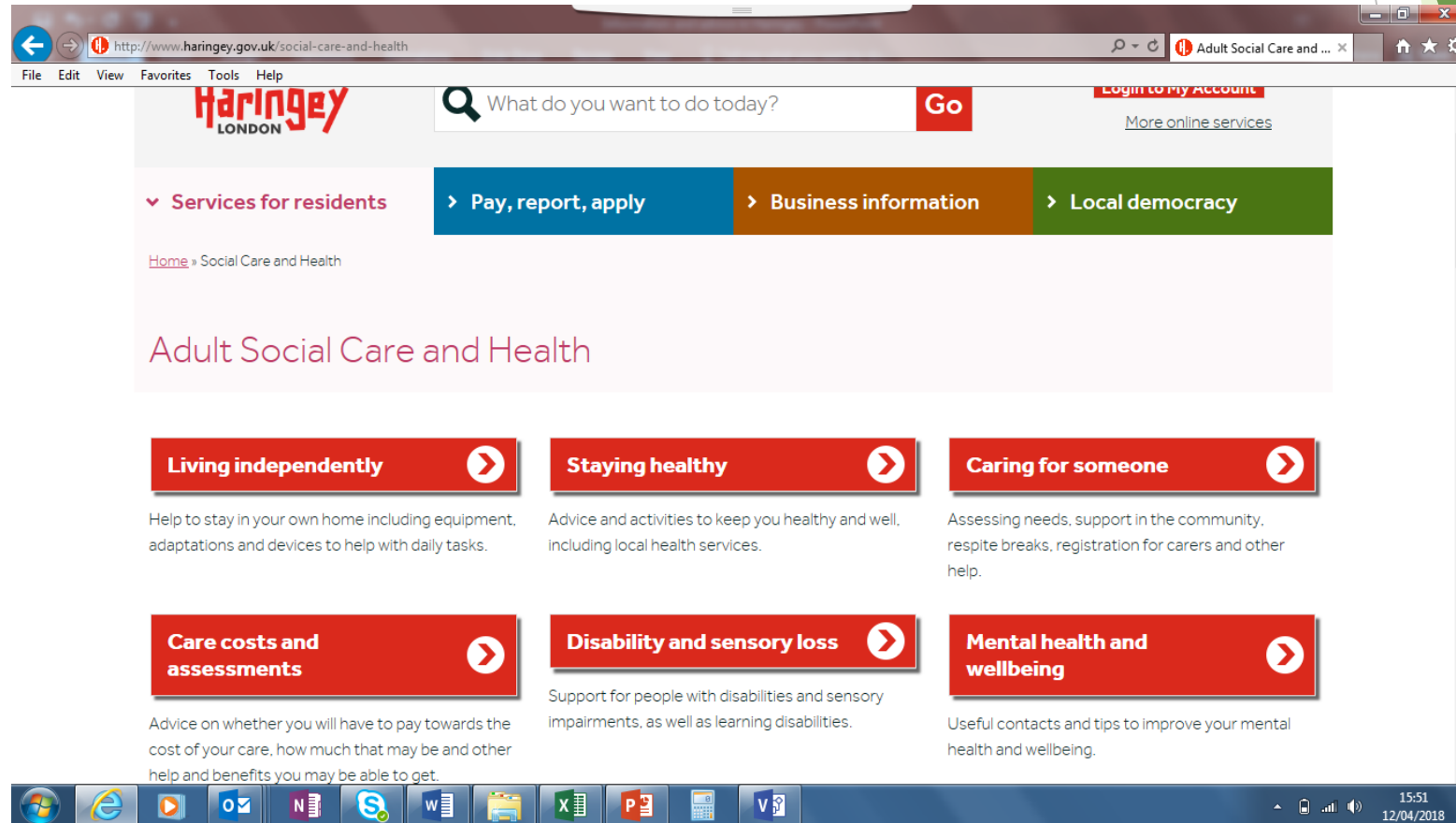
Information about adult services and support can be found in:

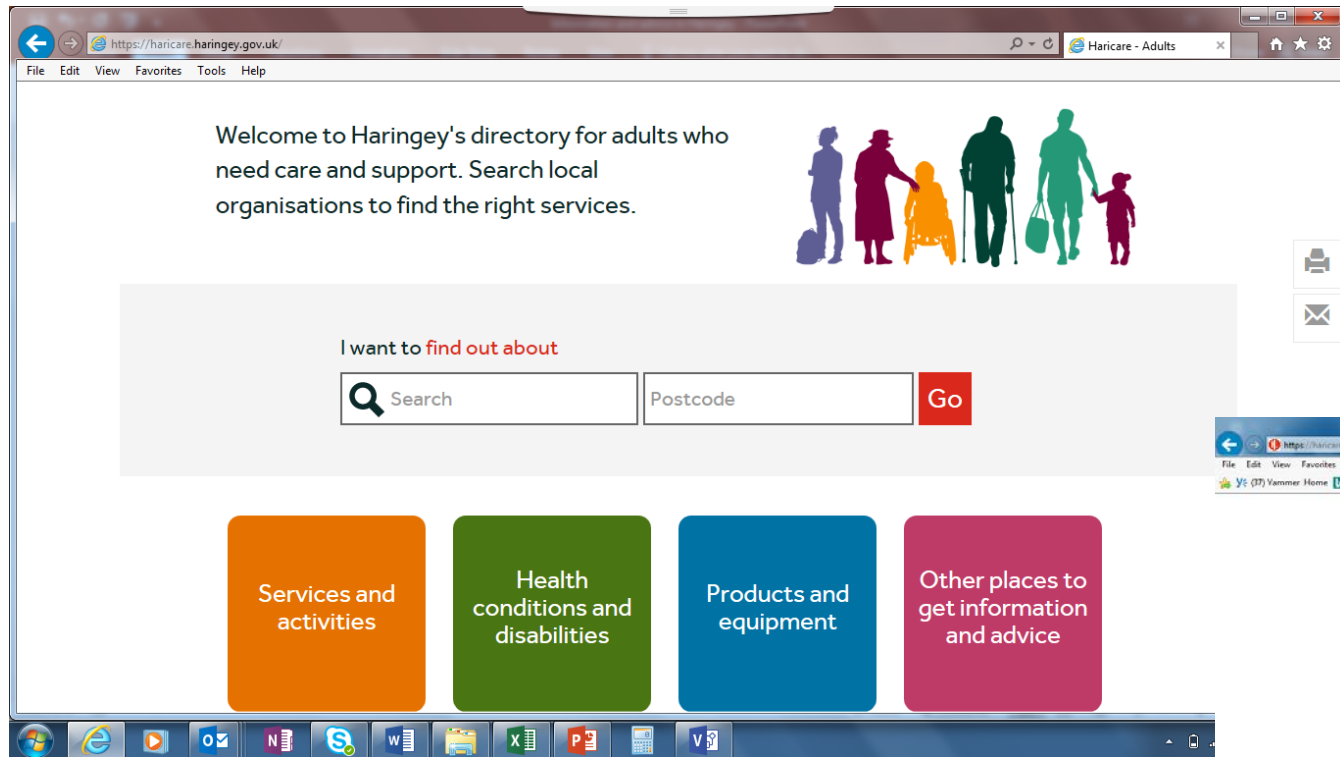
Haricare website <https://haricare.haringey.gov.uk/>

Haringey Adult Social Care web pages: <https://www.haringey.gov.uk/social-care-and-health>

These include:

- ▶ Support to help you wash and dress
- ▶ Support to access your community and activities
- ▶ After college support such as Clubs and other community based activities
- ▶ Holiday activities such as Camps, schemes, trips away, short courses
- ▶ Supported Living
- ▶ Direct Payments
- ▶ Support for Carers






https://haricare.haringey.gov.uk/

File Edit View Favorites Tools Help

Welcome to Haringey's directory for adults who need care and support. Search local organisations to find the right services.



I want to find out about

Search Postcode Go

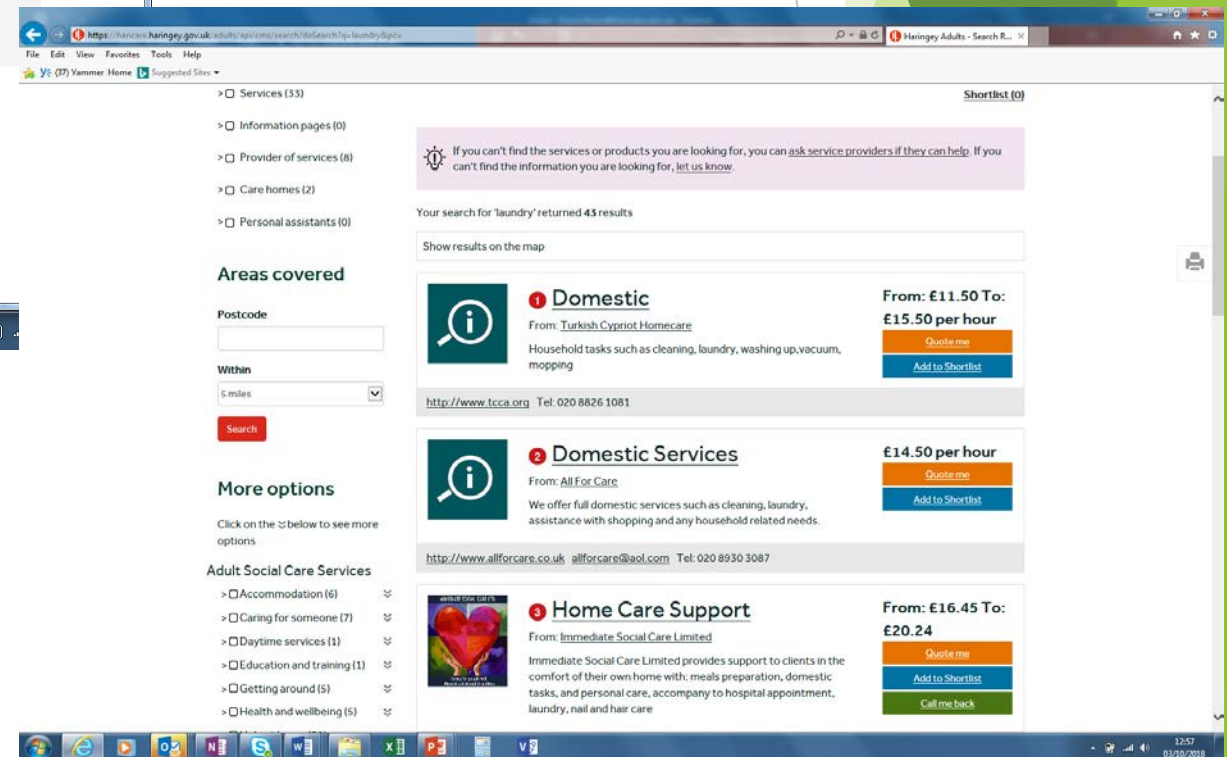
Services and activities

Health conditions and disabilities

Products and equipment

Other places to get information and advice

Windows taskbar: Internet Explorer, Outlook, Word, Excel, PowerPoint, etc.



https://haricare.haringey.gov.uk/adults/cgi-bin/search/16/Search?ip=laundry&ip=

File Edit View Favorites Tools Help

Y: (7) Yammer Home Suggested Sites

Services (33)

Information pages (0)

Provider of services (8)

Care homes (2)

Personal assistants (0)

Shortlist (0)

If you can't find the services or products you are looking for, you can ask service providers if they can help. If you can't find the information you are looking for, let us know.

Your search for 'laundry' returned 45 results

Show results on the map

Postcode

Within 5 miles

Search

More options

Click on the below to see more options

Adult Social Care Services

- Accommodation (6)
- Caring for someone (7)
- Daytime services (1)
- Education and training (1)
- Getting around (5)
- Health and wellbeing (5)

1 Domestic

From: Turkish Cypriot Homecare

Household tasks such as cleaning, laundry, washing up, vacuum, mopping

From: £11.50 To: £15.50 per hour

Quote me Add to Shortlist

http://www.tcca.org Tel: 020 8826 1081

2 Domestic Services

From: All For Care

We offer full domestic services such as cleaning, laundry, assistance with shopping and any household related needs.

£14.50 per hour

Quote me Add to Shortlist

http://www.allforcare.co.uk allforcare@aol.com Tel: 020 8930 3087

3 Home Care Support

From: Immediate Social Care Limited

Immediate Social Care Limited provides support to clients in the comfort of their own home with: meals preparation, domestic tasks, and personal care, accompaniment to hospital appointment, laundry, nail and hair care

From: £16.45 To: £20.24

Quote me Add to Shortlist Call me back

Windows taskbar: Internet Explorer, Outlook, Word, Excel, PowerPoint, etc.

Bridge Renewal - Directory

Login Sign Up



Home

About Us

Our Work

Haringey VCS Directory

Contact Us

Search ...



For healthier, happier communities

The Bridge is a unique charity and social enterprise with a solid track record of delivery.

We deliver services and projects in four programme areas.

Whole Health Services

Community Empowerment & Reablement

Community Facilities

Community Impact Haringey

News



Vacancy: Director of Haringey Giving (Closing date...

Director of Haringey Giving Salary: £40,000 – £43,000 per annum + 6% pension Employment type: Permanent contract Hours: 36 hours per week Based at: North London Closing date: 29 May 2018, 12noon Interviews: 7 June 2018... [Read more »](#)

Subscribe to our Community Impact Bulletin:

email address

Subscribe

- [Local Offer website](#) - Statement of Education Needs and Disabilities information for young people and their families
- [FISD](#) - Families information services directory
- [SENDIASS](#) - Haringey's SEND Information, Advice & Support Service based in the Markfield Centre in South Tottenham
- [Adult social care pages on Haringey website:](#)
 - Information and advice
 - Self-assessment tool (soon available)
- [Haricare](#) - Marketplace directory
- [Bridge Renewal Trust](#) - directory of services

Key Contacts



Haringey Local Offer:
www.haringey.gov.uk/localoffer



SEN Services: sen@haringey.gov.uk



Adult social care:
firstresponseteam@haringey.gov.uk or 020
8489 1400



Haringey Learning Disabilities:
DutyLD@haringey.gov.uk or 020 8489 1062